

THIS MAP WAS PREPARED FOR ASSESSMENT PURPOSE ONLY.

T.25S. R.5E. W.M.
DOUGLAS COUNTY

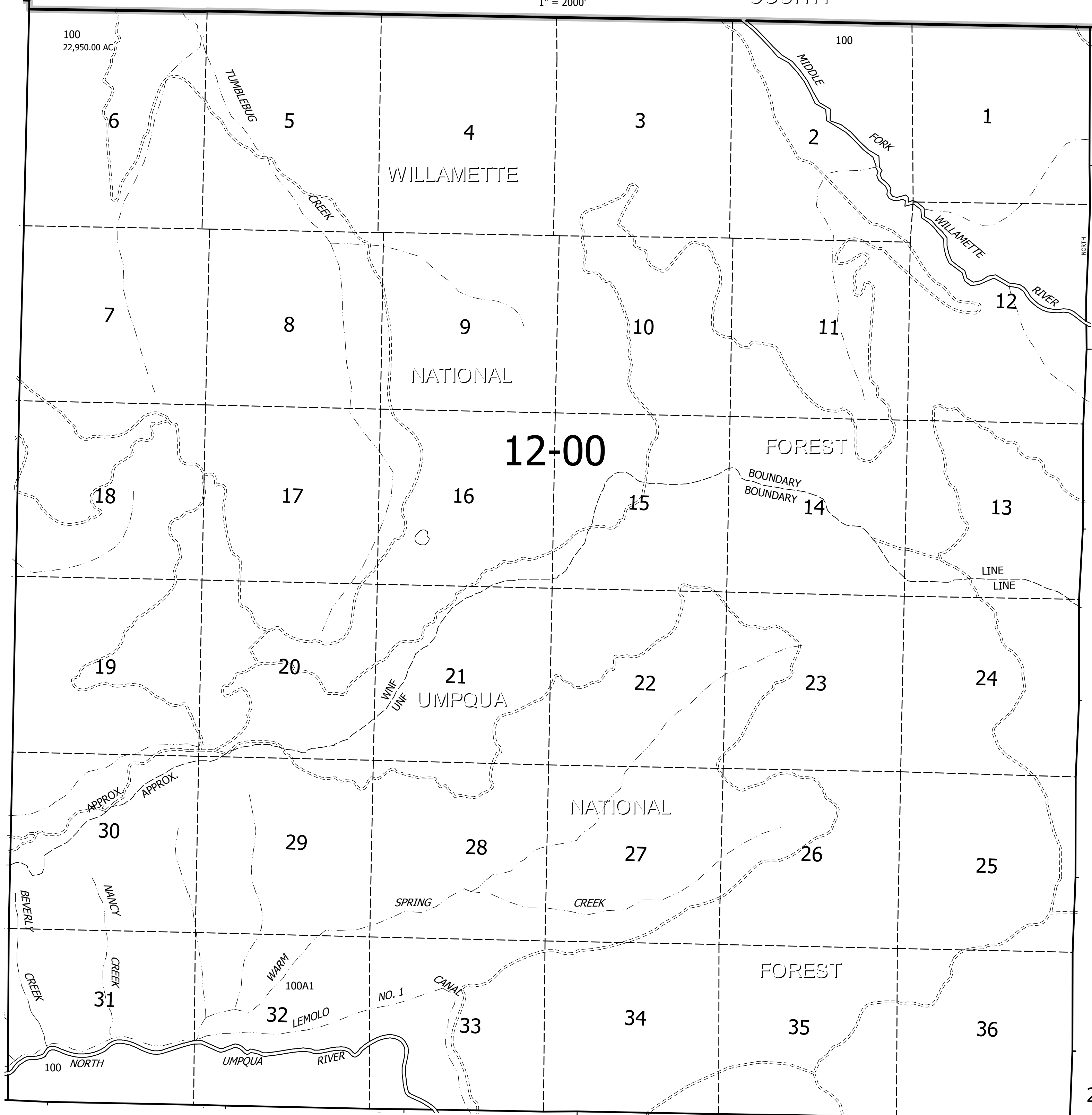
REVISED ON
5-31-12

25 5E 00

LANE

COUNTY

1" = 2000'



CANCELLED NO'S

SEE MAP 25 4E 00

SEE MAP 25 5VE 00

25 5E 00

SEE MAP 26 5E 00