

THIS MAP WAS PREPARED FOR ASSESSMENT PURPOSE ONLY.

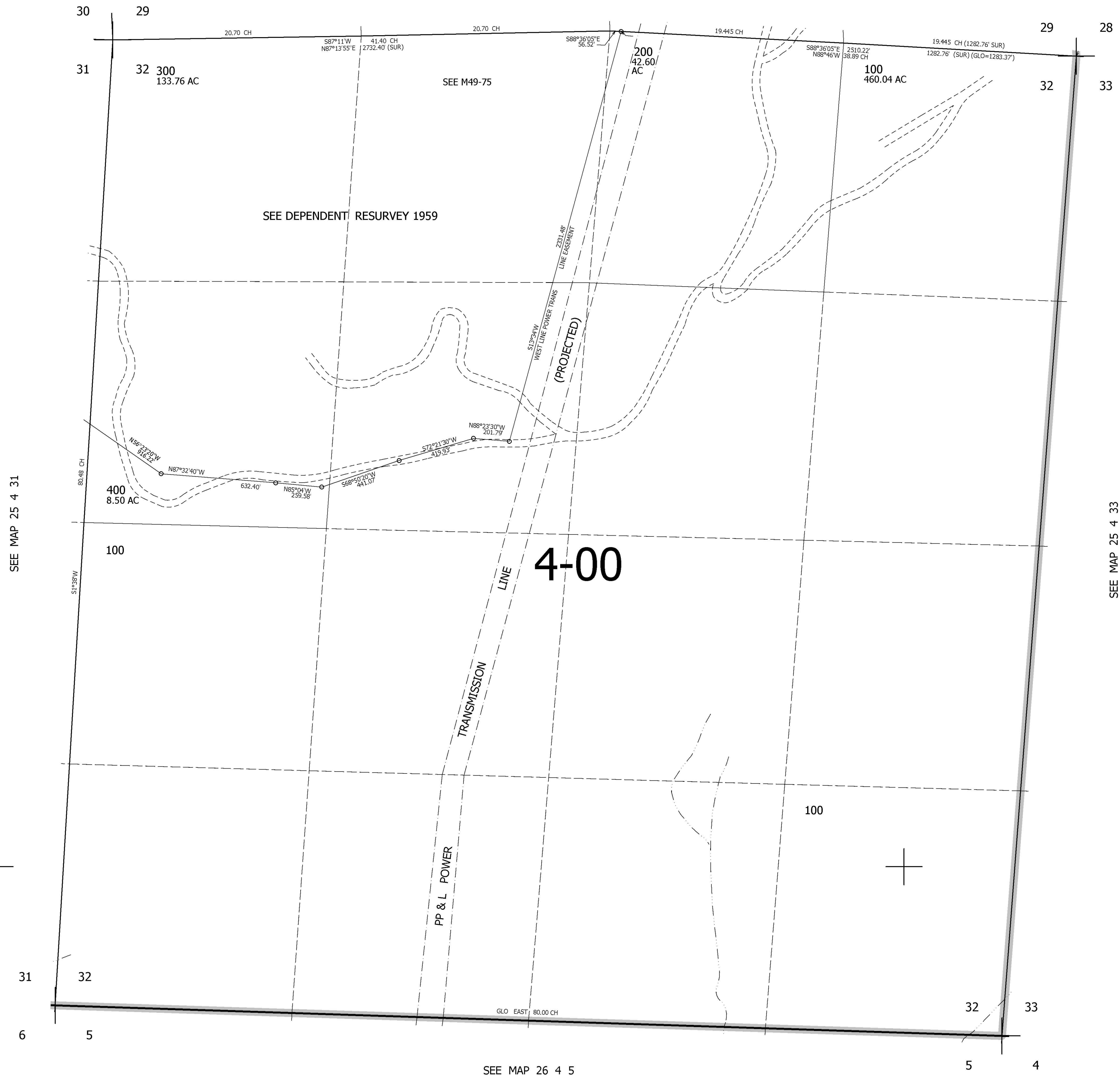
SEC.32 T.25S. R.4W. W.M.  
DOUGLAS COUNTY

REVISED ON

25 4 32

1" = 400'

SEE MAP 25 4 29



CANCELLED NOS

SEE MAP 25 4 31

SEE MAP 25 4 33

SEE MAP 26 4 5

624,000

4,206,000

25 4 32