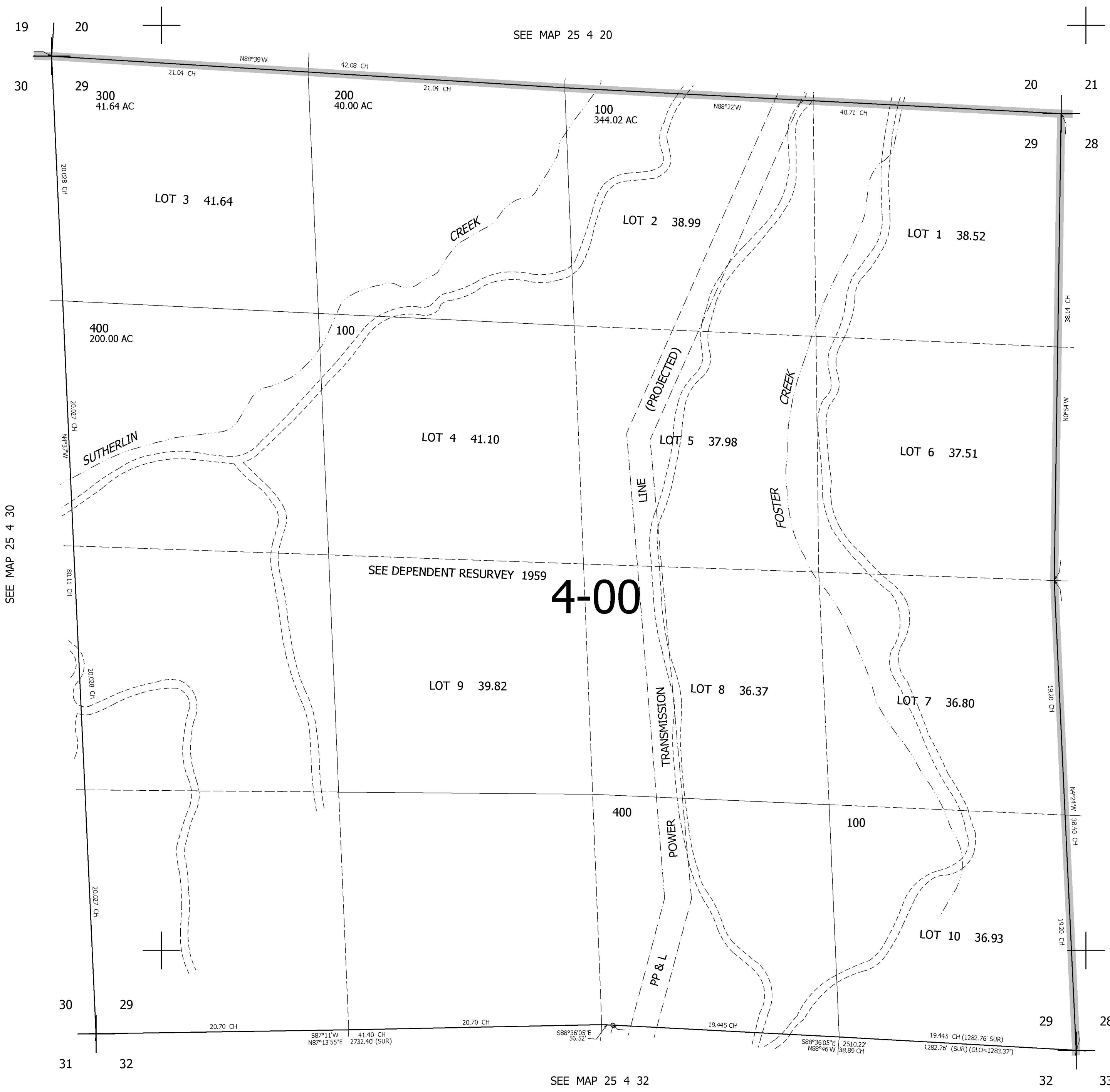


THIS MAP WAS PREPARED FOR ASSESSMENT PURPOSE ONLY.

SEC.29 T.25S. R.4W. W.M.  
DOUGLAS COUNTY  
1" = 400'

REVISED ON

25 4 29



CANCELLED NOS

SEE MAP 25 4 28

629,000

4,207,000

25 4 29