

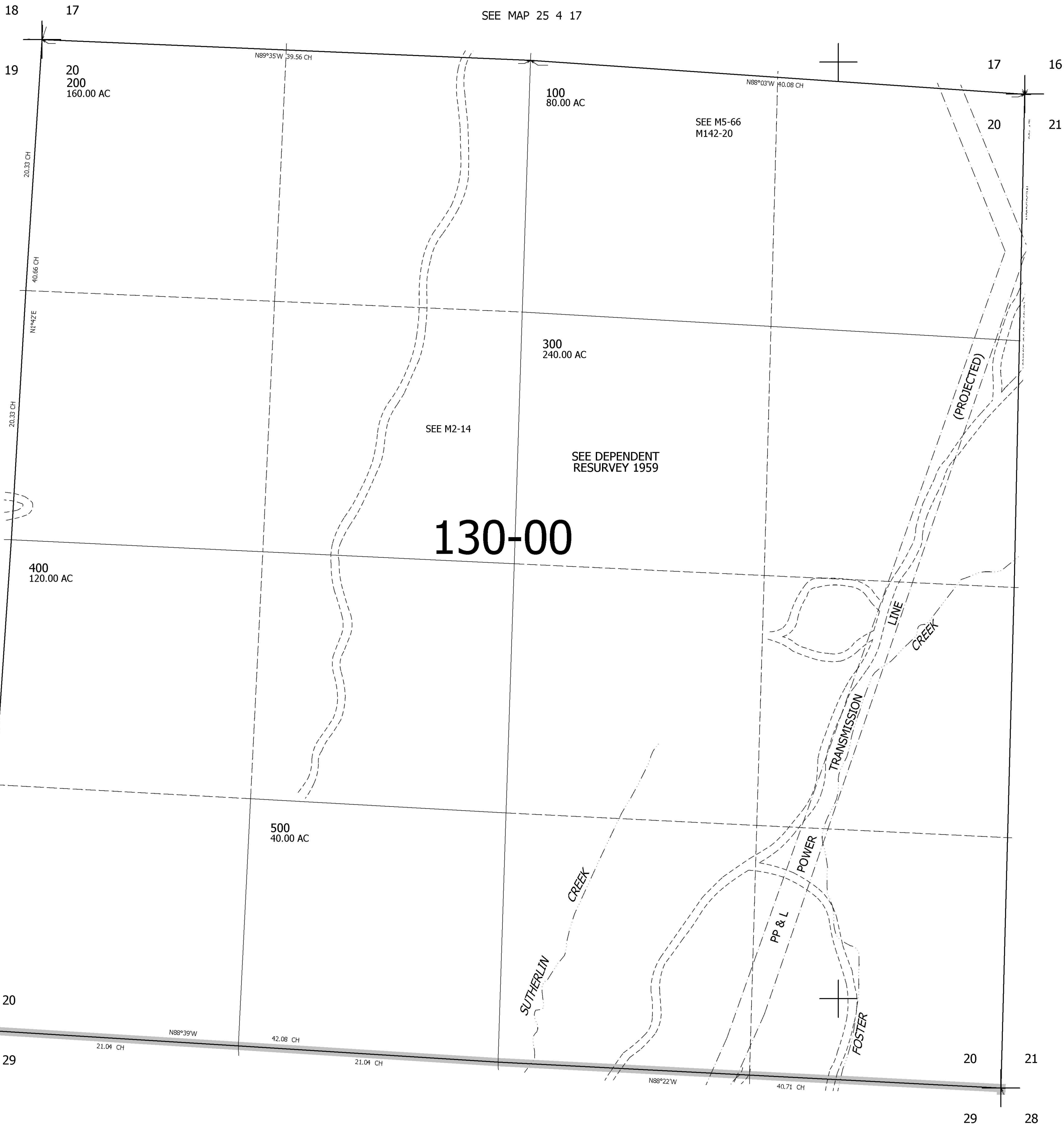
SEC.20 T.25S. R.4W. W.M.
DOUGLAS COUNTY
1" = 400'

REVISED ON

25 4 20

THIS MAP WAS PREPARED FOR
ASSESSMENT PURPOSE ONLY.

SEE MAP 25 4 17



CANCELLED NOS
100M1

SEE MAP 25 4 19

SEE MAP 25 4 21

130-00

635,000

SEE MAP 25 4 29

4,206,000

25 4 20