

THIS MAP WAS PREPARED FOR ASSESSMENT PURPOSE ONLY.

SEC.19 T.25S. R.4W. W.M.
DOUGLAS COUNTY
1" = 400'

REVISED ON
6-14-07

25 4 19

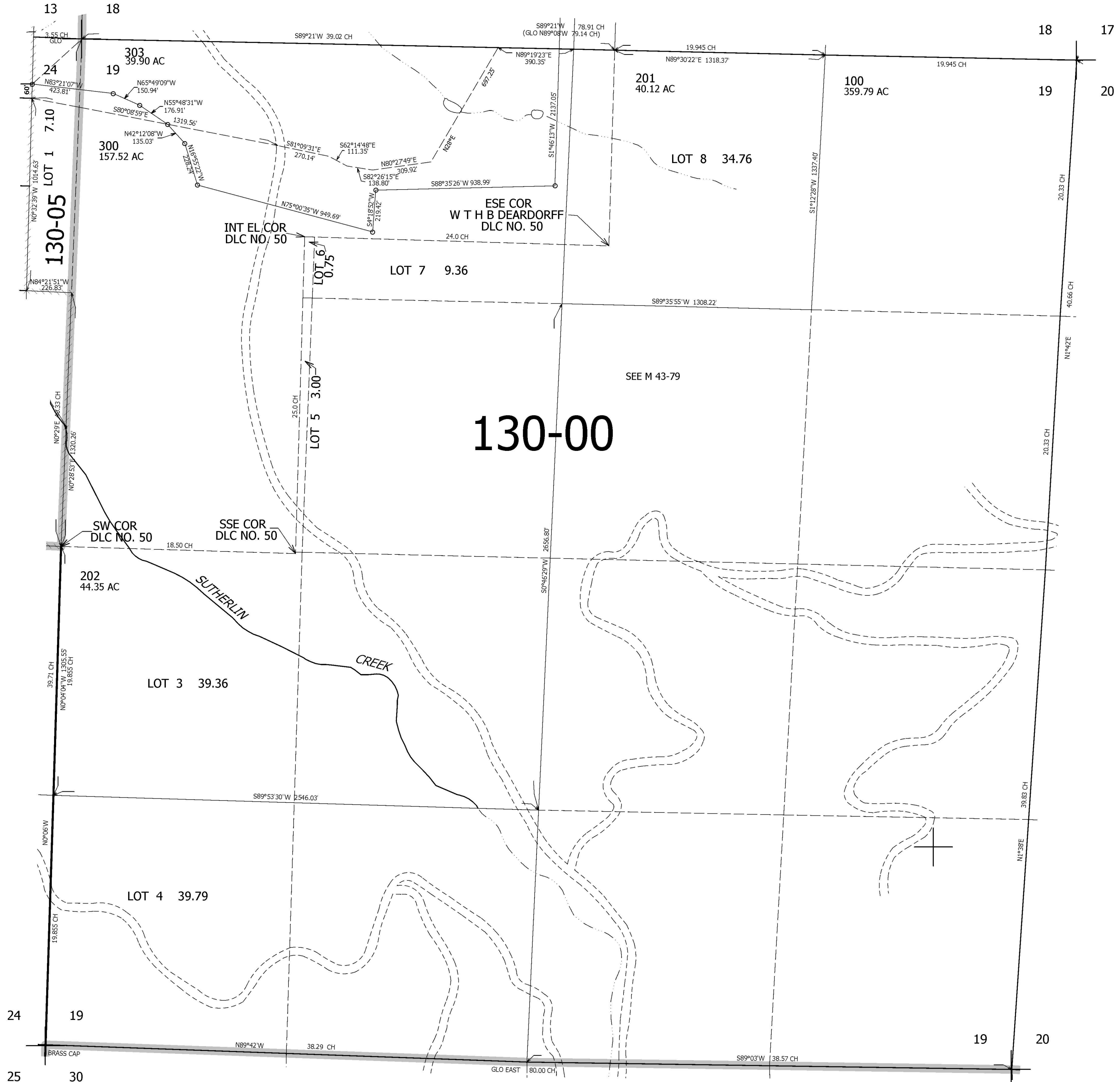
SEE MAP 25 4 18

SEE MAP 25 5 24A

SEE MAP 25 5 24

SEE MAP 25 5 24D

130-00



CANCELLED NOS
301 302 200
304 305

SEE MAP 25 4 20

635,000

SEE MAP 25 4 30

4,201,000

25 4 19