

THIS MAP WAS PREPARED FOR ASSESSMENT PURPOSE ONLY.

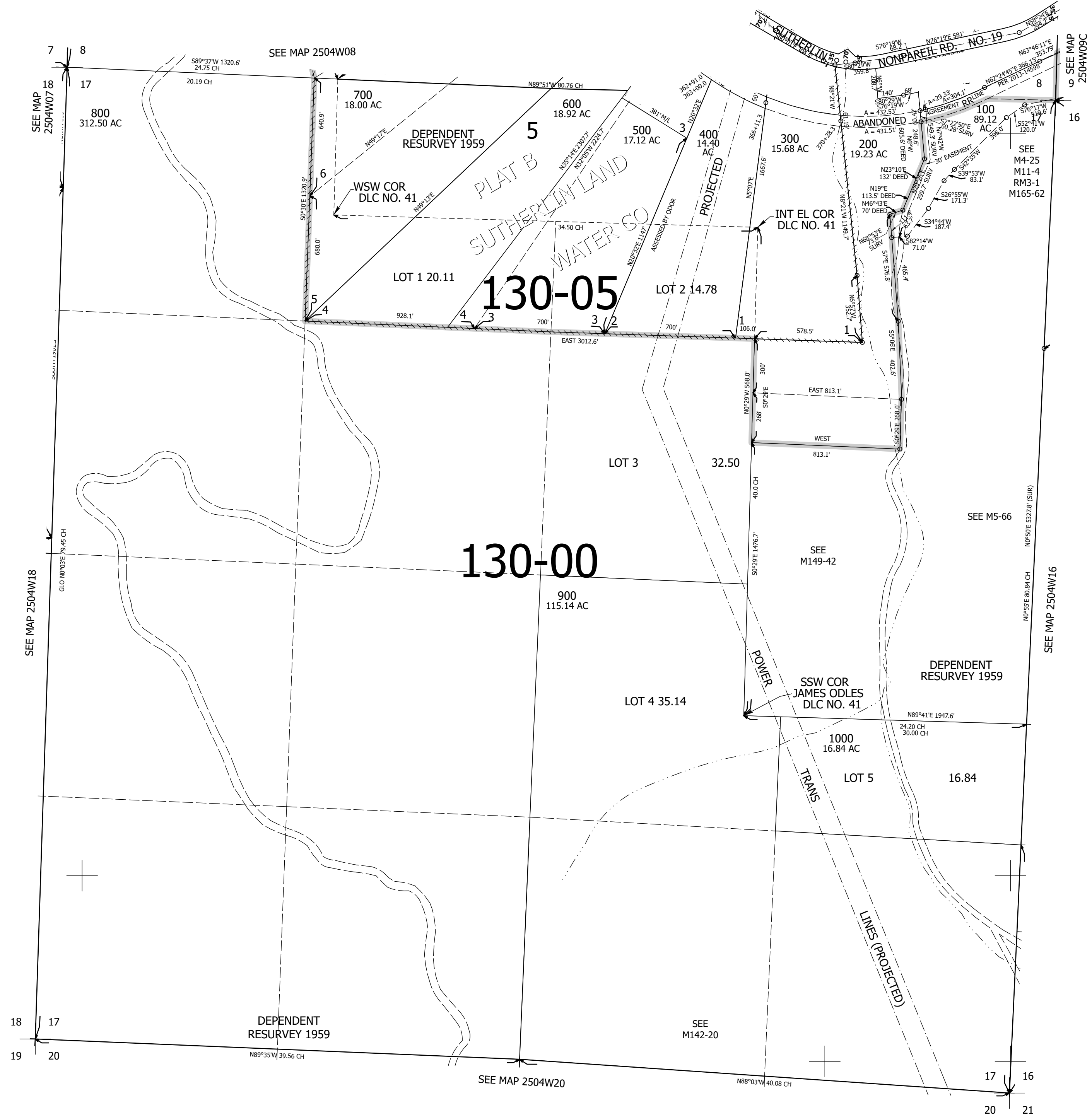
Upper Left:
123°12'45"W 43°24'18"N
4200577E 645242N ft

SEC.17 T.25S. R.04W. W.M.
DOUGLAS COUNTY
1" = 400'

Date Exported 2025-05-15

250417

CANCELLED NOS:
101



250417

Lower Right:
123°10'56"W 43°23'12"N
4208427E 638287N ft