

SEC.16 T.25S. R.4W. W.M.
DOUGLAS COUNTY

REVISED ON
12-27-04

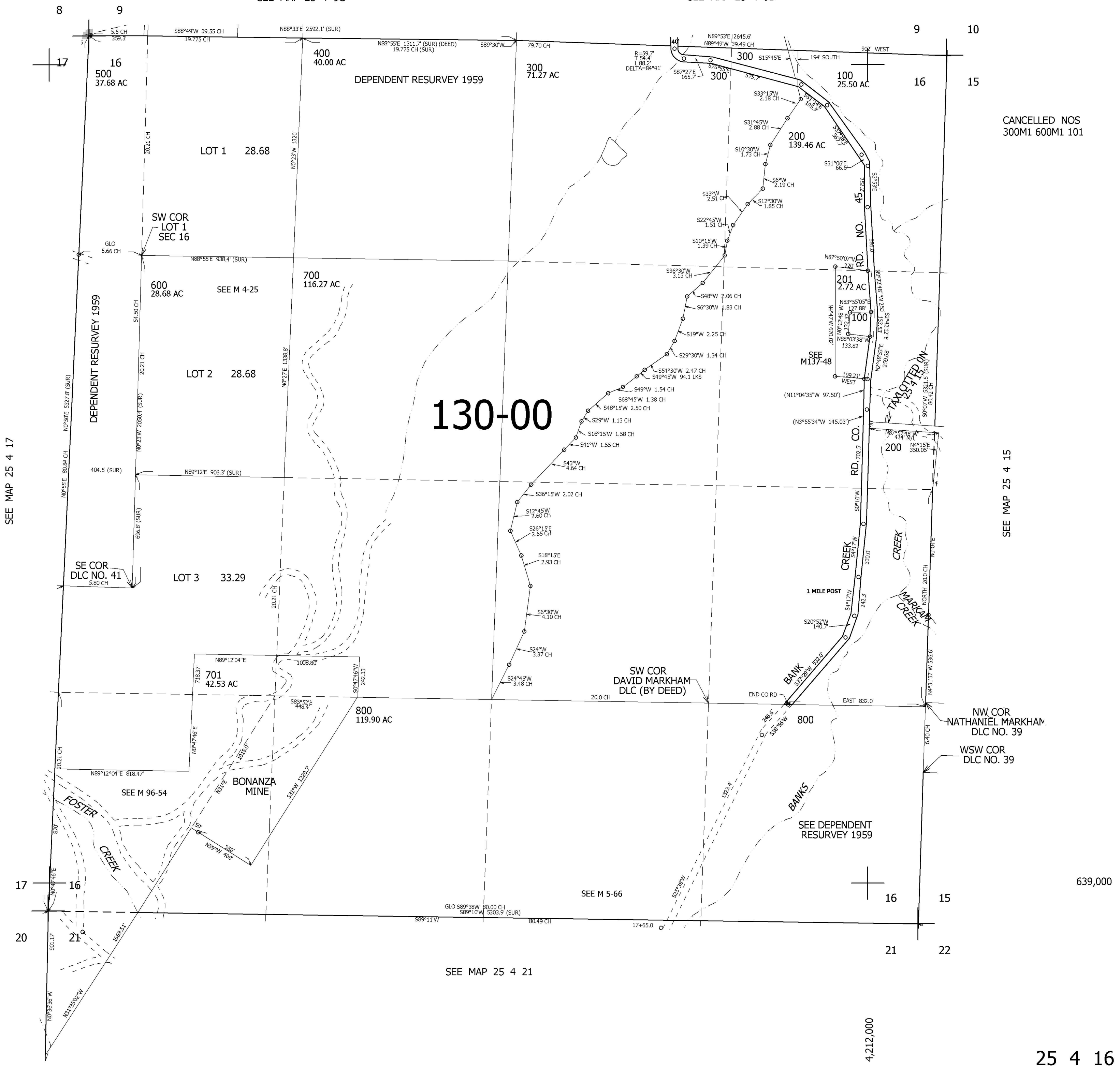
25 4 16

1" = 400'

SEE MAP 25 4 9C

SEE MAP 25 4 9D

THIS MAP WAS PREPARED FOR
ASSESSMENT PURPOSE ONLY.



CANCELLED NOS
300M1 600M1 101

SEE MAP 25 4 15

SEE MAP 25 4 17

639,000

4,212,000

25 4 16