

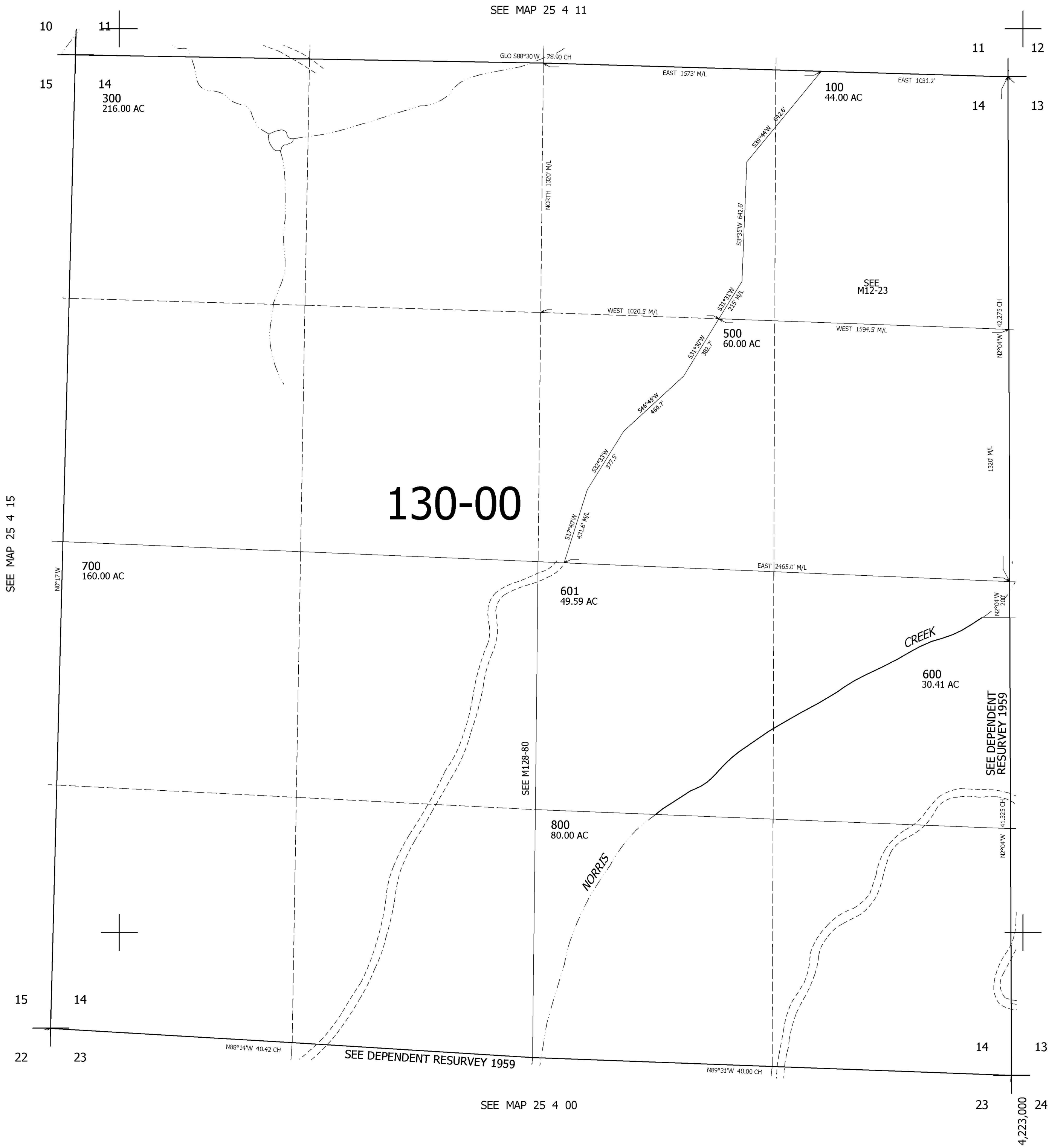
THIS MAP WAS PREPARED FOR ASSESSMENT PURPOSE ONLY.

SEC.14 T.25S. R.4W. W.M.  
DOUGLAS COUNTY

1" = 400'

REVISED ON  
2-14-94

25 4 14



CANCELLED NOS  
400 200 800M1

SEE MAP 25 4 13

SEE DEPENDENT  
RESURVEY 1959

639,000

25 4 14

4,223,000