

THIS MAP WAS PREPARED FOR ASSESSMENT PURPOSE ONLY.

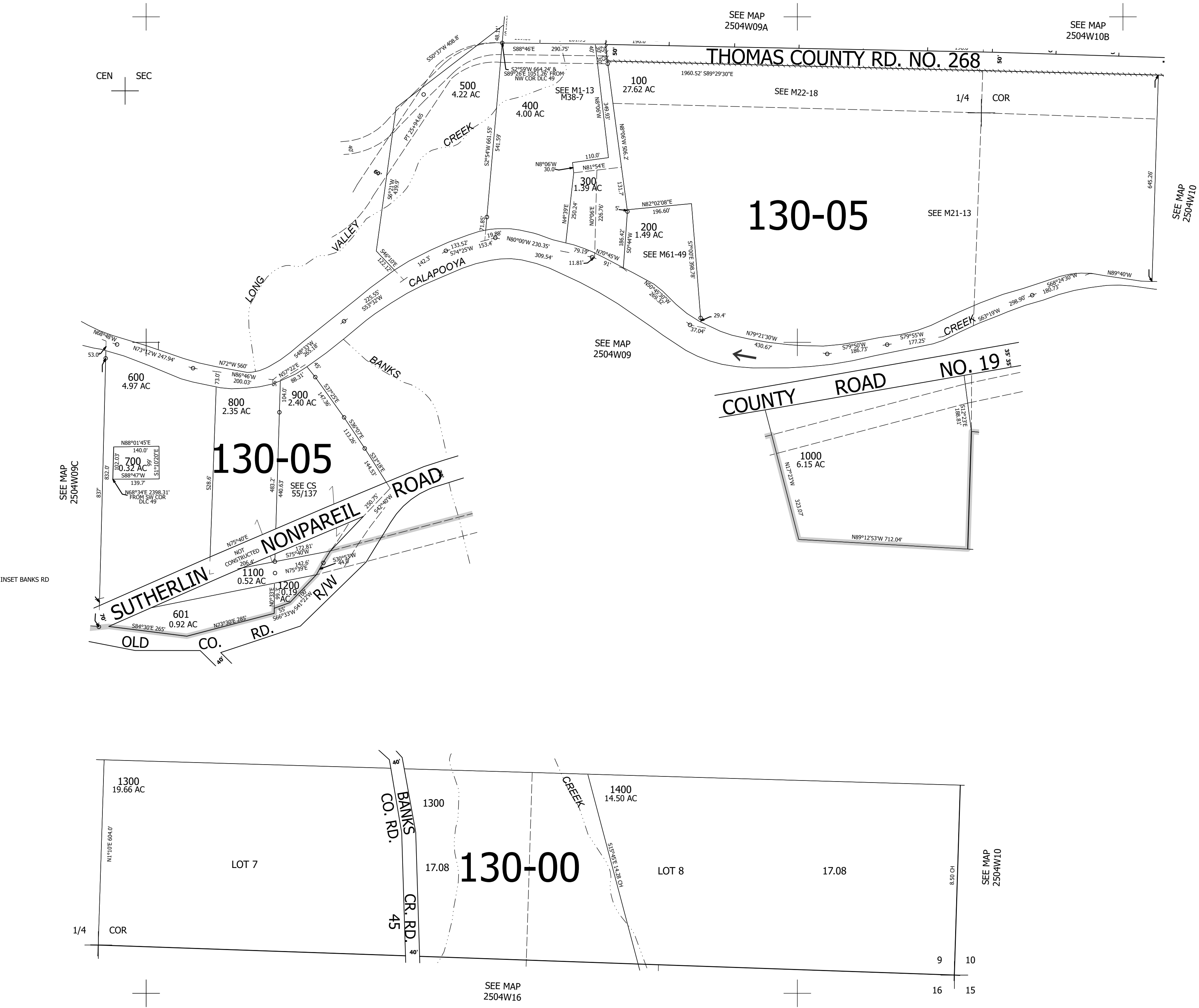
Upper Left:
123°10'45"W 43°24'41"N
4209502E 647260N ft

SE1/4 SEC.09 T.25S. R.04W. W.M.
DOUGLAS COUNTY
1" = 200'

Date Exported 2025-09-18

250409D

CANCELLED NOS:
300M1 400M1 500M1
1300M1



CEN SEC

SEE MAP
2504W09A

SEE MAP
2504W10B

THOMAS COUNTY RD. NO. 268

130-05

130-05

COUNTY ROAD NO. 19

SUTHERLIN

NONPAREIL

ROAD

130-00

BANKS
CO. RD.
45

SEE MAP
2504W10

SEE MAP
2504W16

250409D

Lower Right:
123°9'50"W 43°24'8"N
4213426E 643782N ft