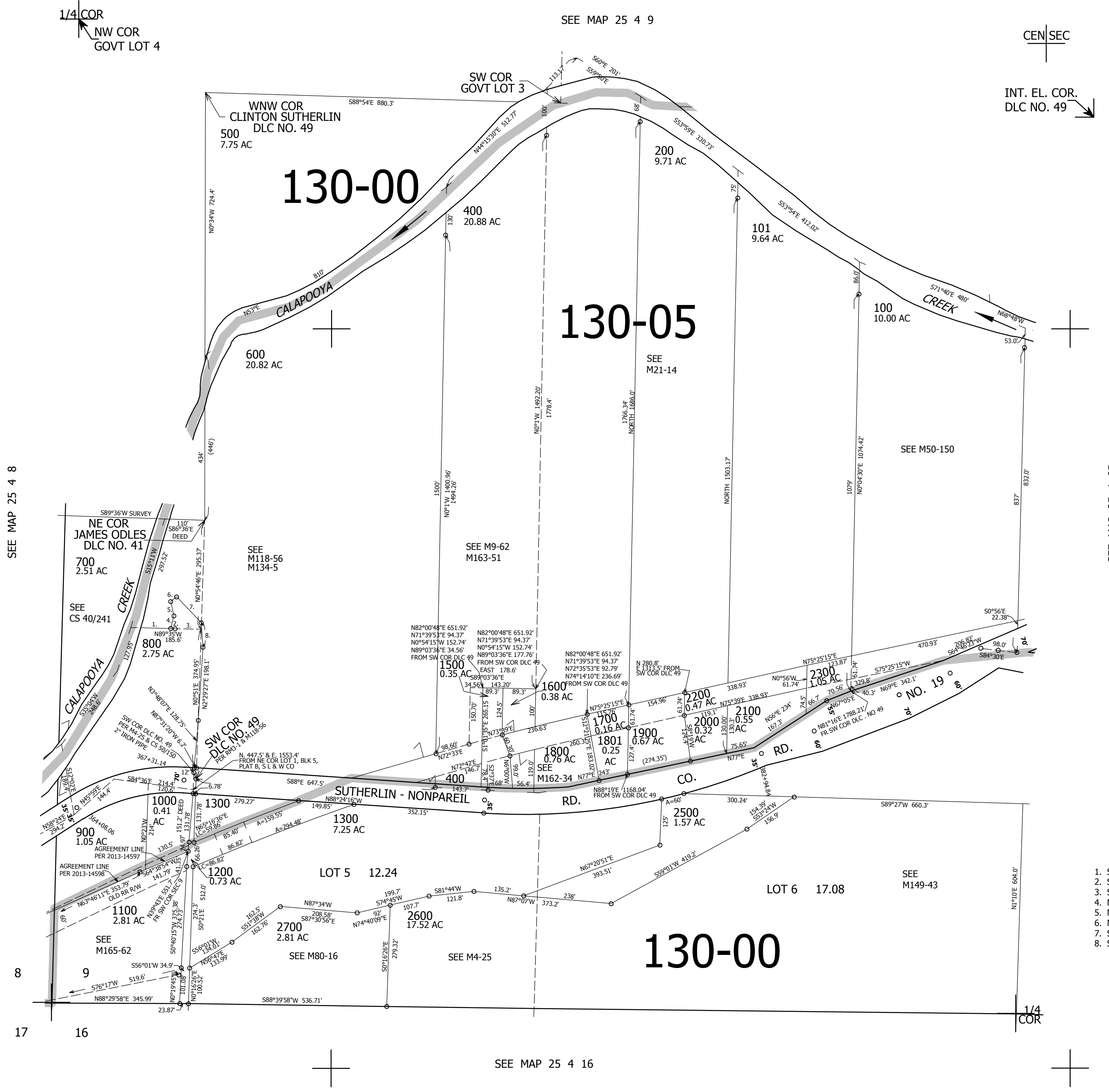


THIS MAP WAS PREPARED FOR ASSESSMENT PURPOSE ONLY.

SW1/4 SEC.9 T.25S. R.4W. W.M.
DOUGLAS COUNTY
1" = 200'

REVISED ON
11-21-13

25 4 9C



CANCELLED NOS
601 801 300
1400 1501 401
1701 2301 2400
1101 1102

- PARCEL 600
1. S89°37'49"E 100.34'
 2. S89°37'49"E 12.13'
 3. S89°37'49"E 70.74'
 4. N13°22'25"E 35.63'
 5. N13°52'24"E 39.27'
 6. N48°51'31"E 20.47'
 7. S44°48'49"E 96.95'
 8. S4°54'21"E 66.52'

644,000

25 4 9C