

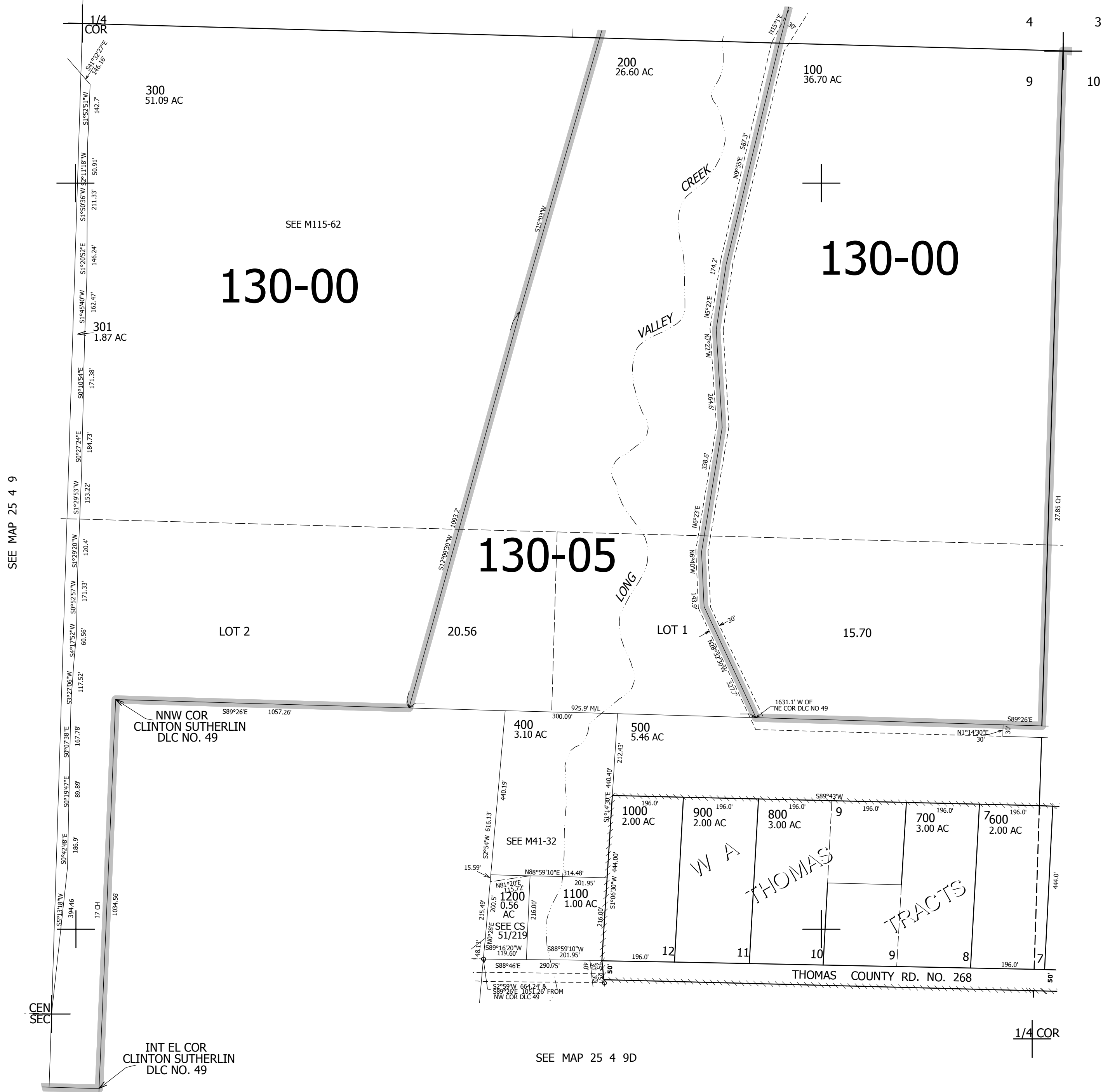
THIS MAP WAS PREPARED FOR ASSESSMENT PURPOSE ONLY.

NE1/4 SEC.9 T.25S. R.4W. W.M.
DOUGLAS COUNTY
1" = 200'

REVISED ON
4-8-96

25 4 9A

SEE MAP 25 4 4



CANCELLED NOS
100M1 200M1 300M1
301M1 400M1 1100M1
1200M1

SEE MAP 25 4 9

SEE MAP 25 4 10B

SEE MAP 25 4 9D

4,212,000

25 4 9A

647,000