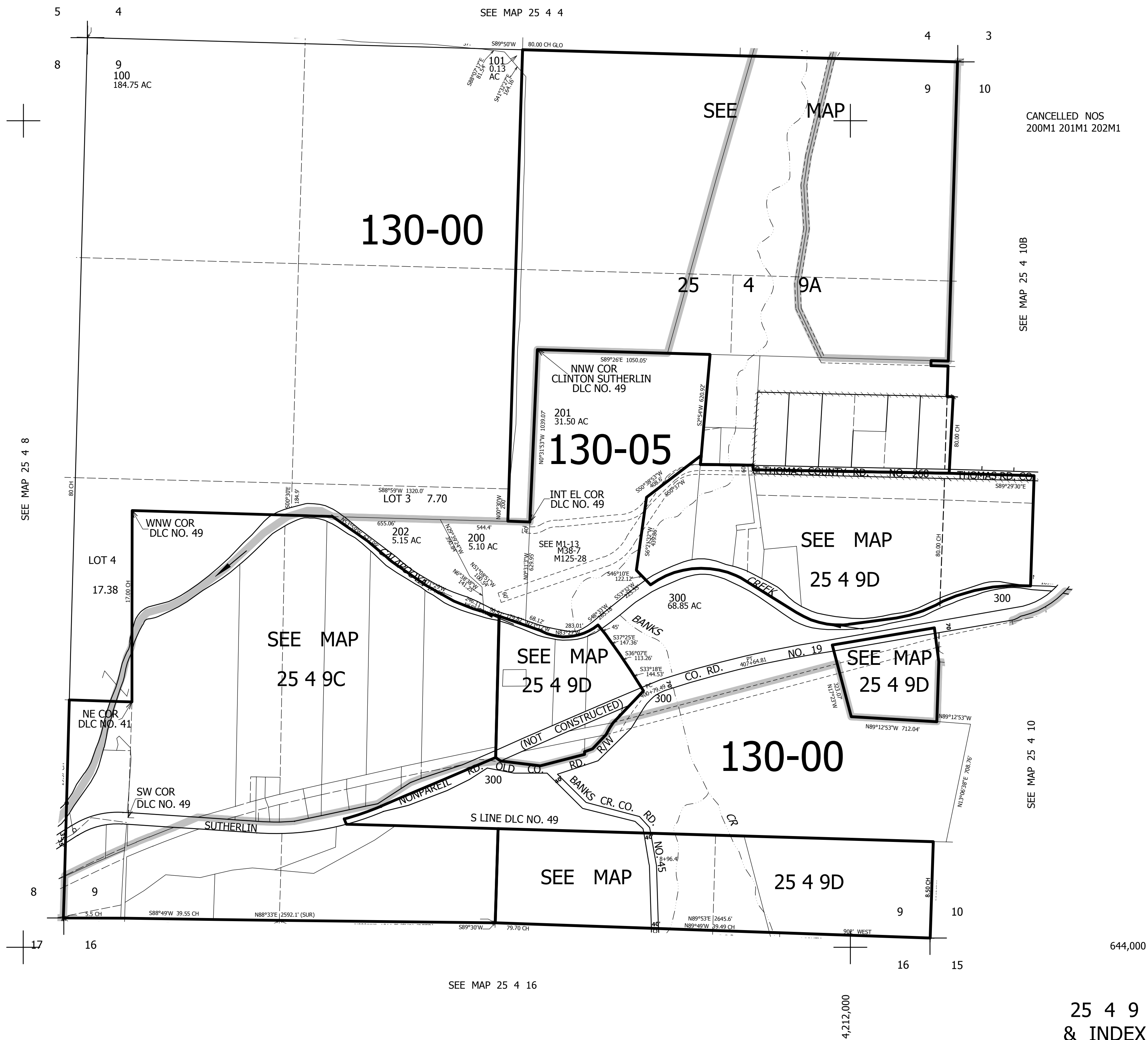


THIS MAP WAS PREPARED FOR ASSESSMENT PURPOSE ONLY.

SEC.9 T.25S. R.4W. W.M.
DOUGLAS COUNTY
1" = 400'

REVISED ON
11-21-13

25 4 9
& INDEX



CANCELLED NOS
200M1 201M1 202M1

SEE MAP 25 4 10B

SEE MAP 25 4 10

644,000

25 4 9
& INDEX

SEE MAP 25 4 16

4,212,000

5 4 SEE MAP 25 4 4 4 3

8 9 100 184.75 AC 101 0.13 AC

130-00

25 4 9A

SEE MAP

201 31.50 AC 130-05

INT EL COR DLC NO. 49

202 5.15 AC 200 5.10 AC

SEE M1-13 M36-7 M125-28

300 68.85 AC

300 68.85 AC

SEE MAP 25 4 9D

SEE MAP 25 4 9C

SEE MAP 25 4 9D

SEE MAP 25 4 9D

130-00

SEE MAP 25 4 9D

8 9 10

17 16 16 15

SEE MAP 25 4 8

SEE MAP 25 4 10