

THIS MAP WAS PREPARED FOR ASSESSMENT PURPOSE ONLY.

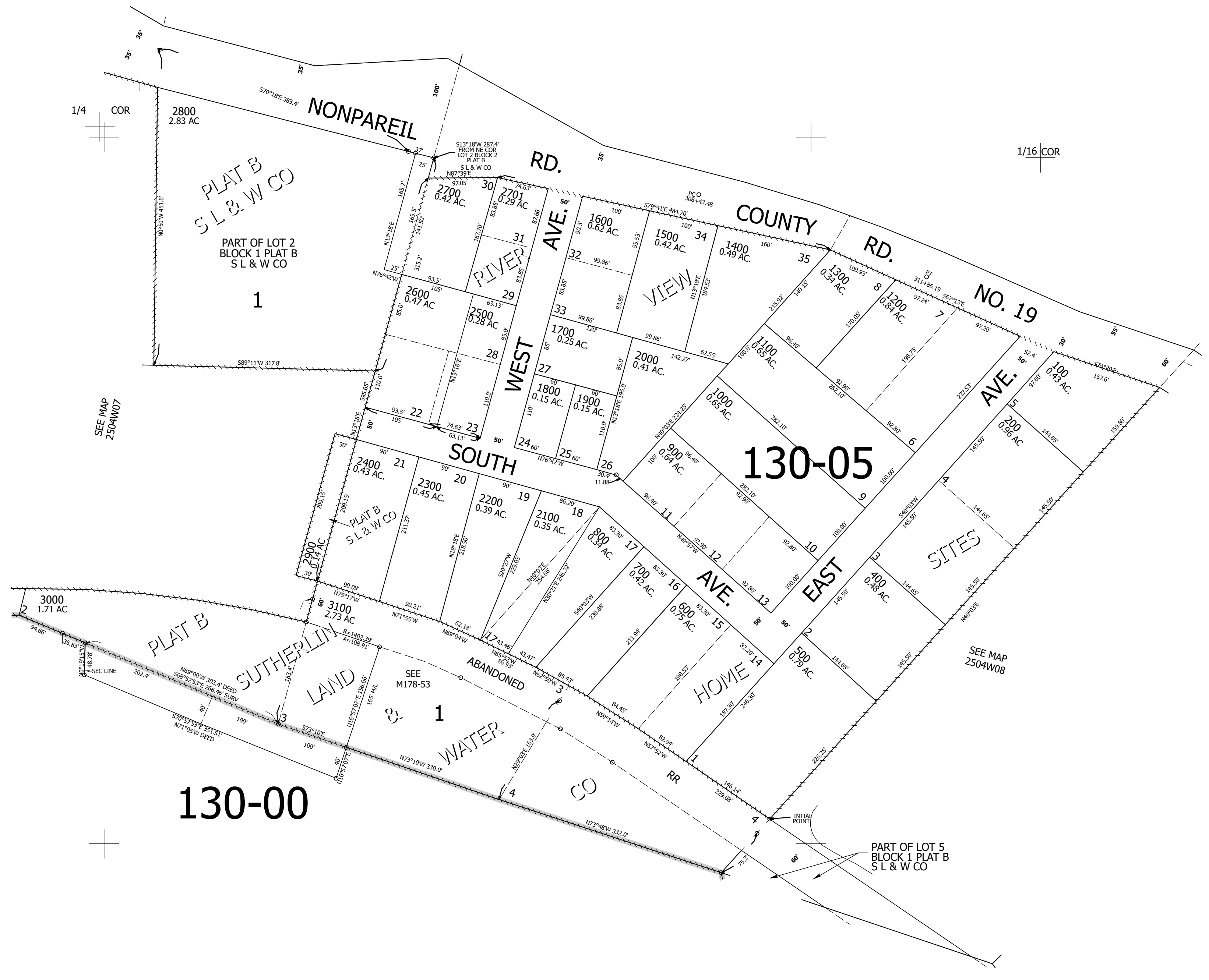
Upper Left:  
123°12'30"W 43°24'40"N  
4201728E 647379N ft

NW1/4 SW1/4 SEC.08 T.25S. R.04W. W.M.  
DOUGLAS COUNTY  
1" = 100'

Date Exported 2025-09-25

250408CB

CANCELLED NOS:  
300 2501 2601  
3200



1/4 COR

1/16 COR

SEE MAP 2504W07

SEE MAP 2504W08

+

1/16 COR

PART OF LOT 5  
BLOCK 1 PLAT B  
S L & W CO

250408CB

Lower Right:  
123°12'3"W 43°24'23"N  
4203703E 645640N ft