

THIS MAP WAS PREPARED FOR ASSESSMENT PURPOSE ONLY.

Upper Left:
123°12'48"W 43°25'9"N
4200513E 650345N ft

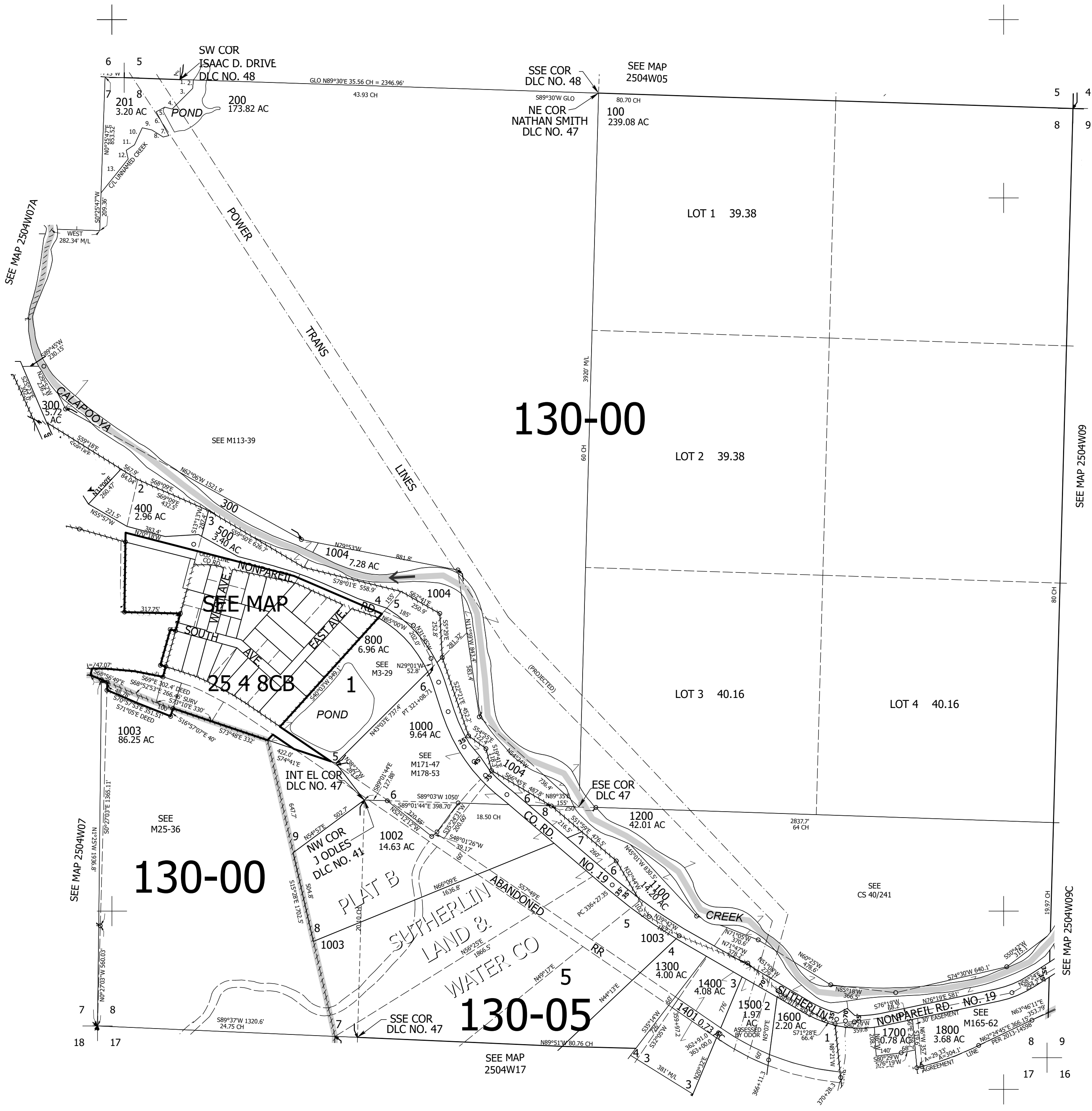
SEC.08 T.25S. R.04W. W.M.
DOUGLAS COUNTY
1" = 400'

Date Exported 2025-09-25

250408
& INDEX

CANCELLED NOS:
200M1 600 700
900 1001 1801

- PARCEL 201
- 1. EAST 75'
- 2. S3°16'22"W 47.62'
- 3. S43°08'12"W 163.99'
- 4. N75°57'08"W 41.84'
- 5. S59°58'52"W 55.84'
- 6. S29°34'29"E 151'
- 7. S75°00'00"W 32'
- 8. N60°00'00"W 75'
- 9. N79°00'00"W 55'
- 10. S23°00'00"W 105'
- 11. S55°00'00"W 55'
- 12. S14°00'00"E 50'
- 13. S37°00'00"W 234.97'



130-00

130-00

130-05

250408
& INDEX

Lower Right:
123°10'59"W 43°24'3"N
4208362E 643389N ft