

THIS MAP WAS PREPARED FOR ASSESSMENT PURPOSE ONLY.

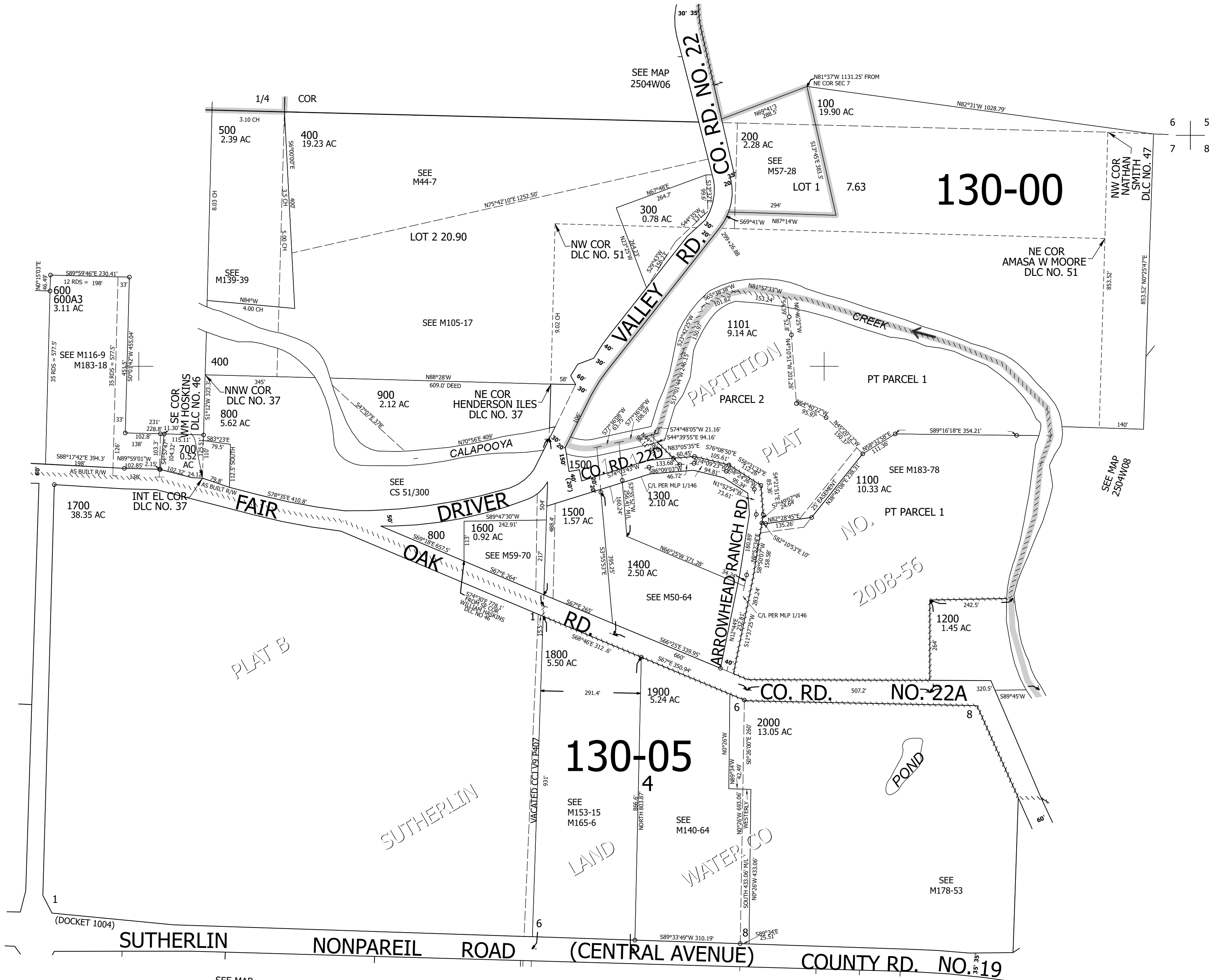
Upper Left:  
123°13'18"W 43°25'8"N  
4198344E 650352N ft

NE1/4 SEC.07 T.25S. R.04W. W.M.  
DOUGLAS COUNTY  
1" = 200'

Date Exported 2024-07-16

250407A

CANCELLED NOS:  
600A1 1000M1 100M1  
200M1 400M1 1901  
2001 600A2 601  
1102



SEE MAP 2504W07

CEN SEC

1/4 COR 250407A

Lower Right:  
123°12'23"W 43°24'35"N  
4202269E 646874N ft