

THIS MAP WAS PREPARED FOR ASSESSMENT PURPOSE ONLY.

Upper Left:
123°13'55"W 43°25'7"N
4195603E 650277N ft

SEC.07 T.25S. R.04W. W.M.
DOUGLAS COUNTY
1" = 400'

Date Exported 2026-01-26

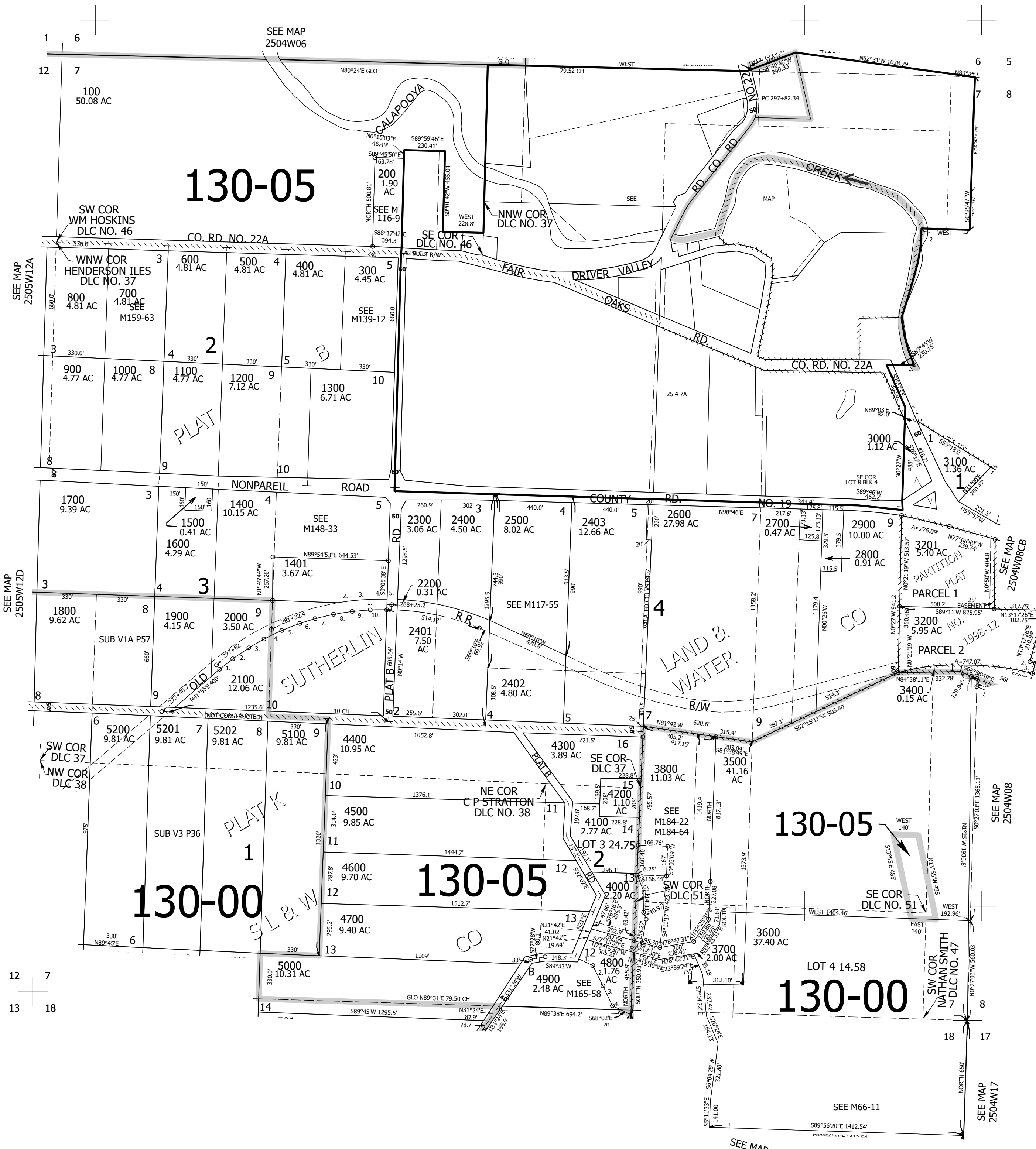
250407
& INDEX

CANCELLED NOS:
2404 5300 2405
2406 2407 3300
3800M1 800M1 2100M1
3800M1 3900M1 4000M1
4100M1 5100M1 5200M1
1402 1403 3801
3900 4001

- PARCEL 2100
1. N49°50'E 100'
 2. N54°10'E 100'
 3. N58°18'E 100'
 4. N62°45'E 100'
 5. N66°56'E 106'
 6. N70°47'E 93'
 7. N74°45'E 100'
 8. N78°57'E 100'
 9. N83°05'E 100'
 10. N86°46'E 104'

- PARCEL 2000
1. WEST 290.8'
 2. N80°21'E 102.6'
 3. N84°22'E 102.1'
 4. N88°13'E 94.4'
 5. SOUTH 30'

- PARCEL 4800
1. S40°28'E 105.6'
 2. S30°10'E 124.7'
 3. S28°42'E 128.8'
 4. S68°02'E 150.7'



12 7
13 18

SEE MAP
2504W18

SEE MAP
2504W17

SEE MAP
2504W08

SEE MAP
2504W08CB

250407
& INDEX

Lower Right:
123°12'5"W 43°24"N
4203452E 643322N ft