

THIS MAP WAS PREPARED FOR ASSESSMENT PURPOSE ONLY.

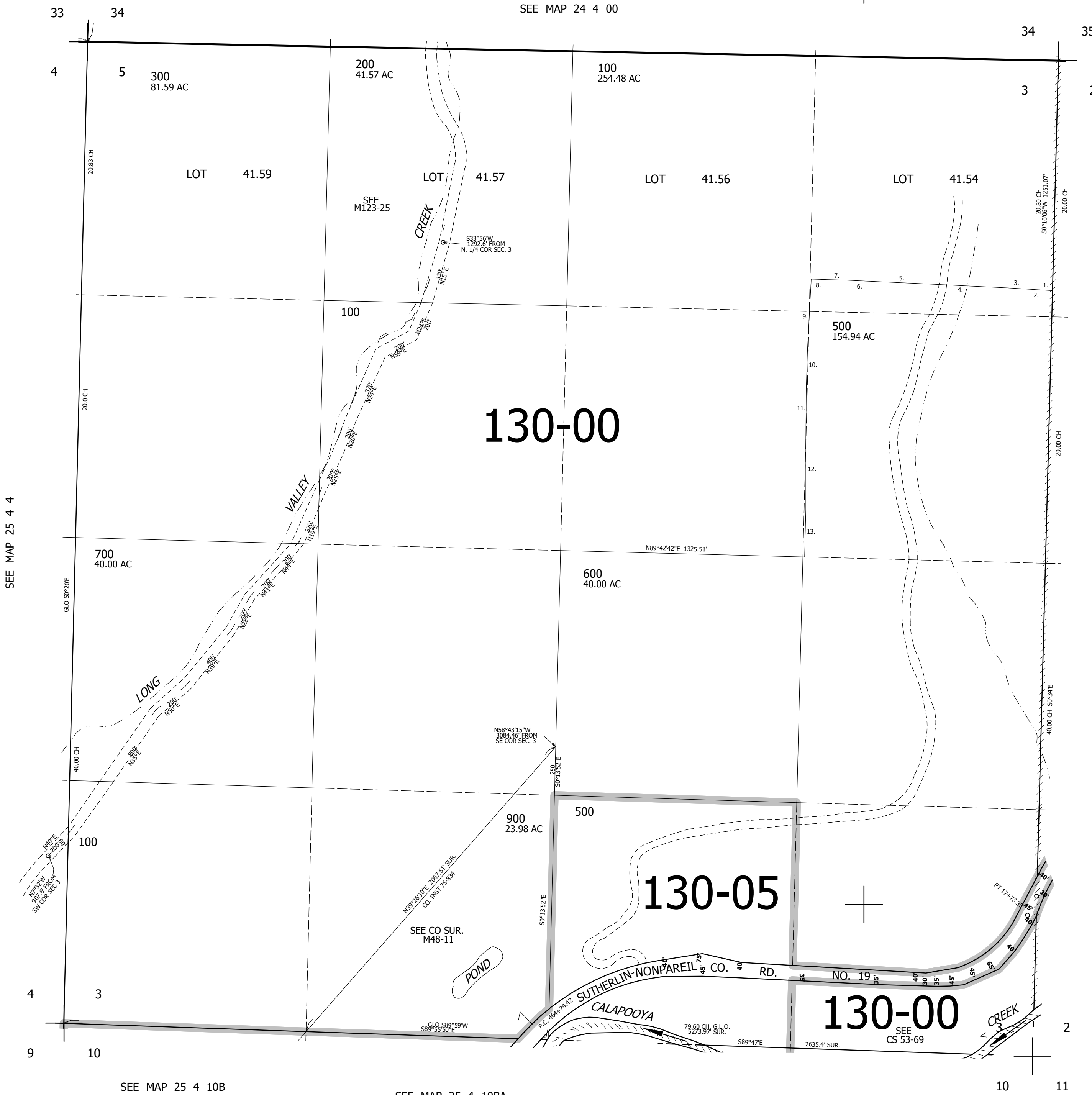
SEC.3 T.25S. R.4W. W.M.  
DOUGLAS COUNTY

REVISED ON  
3-19-14

25 4 3

1" = 400'

SEE MAP 24 4 00



CANCELLED NOS  
400 800 800M1  
101 700M1 100M1  
1000

PARCELS 100 & 500

1. N88°09'05"W 23.51'
2. N88°12'02"W 131.67'
3. N87°24'45"W 85.13'
4. N88°38'10"W 491.03'
5. N88°48'10"W 202.76'
6. N88°42'07"W 201.25'
7. N89°23'07"W 98.15'
8. N89°38'19"W 79.76'
9. S1°41'52"W 375.74'
10. S0°23'23"W 210.8'
11. S0°54'04"E 270.99'
12. S1°19'30"E 396.93'
13. S0°11'46"W 255.12'

SEE MAP 25 4 4

SEE MAP 25 4 2

130-00

130-05

130-00

650,000

SEE MAP 25 4 10B

SEE MAP 25 4 10BA

SEE MAP 25 4 10

4,217,000

25 4 3