

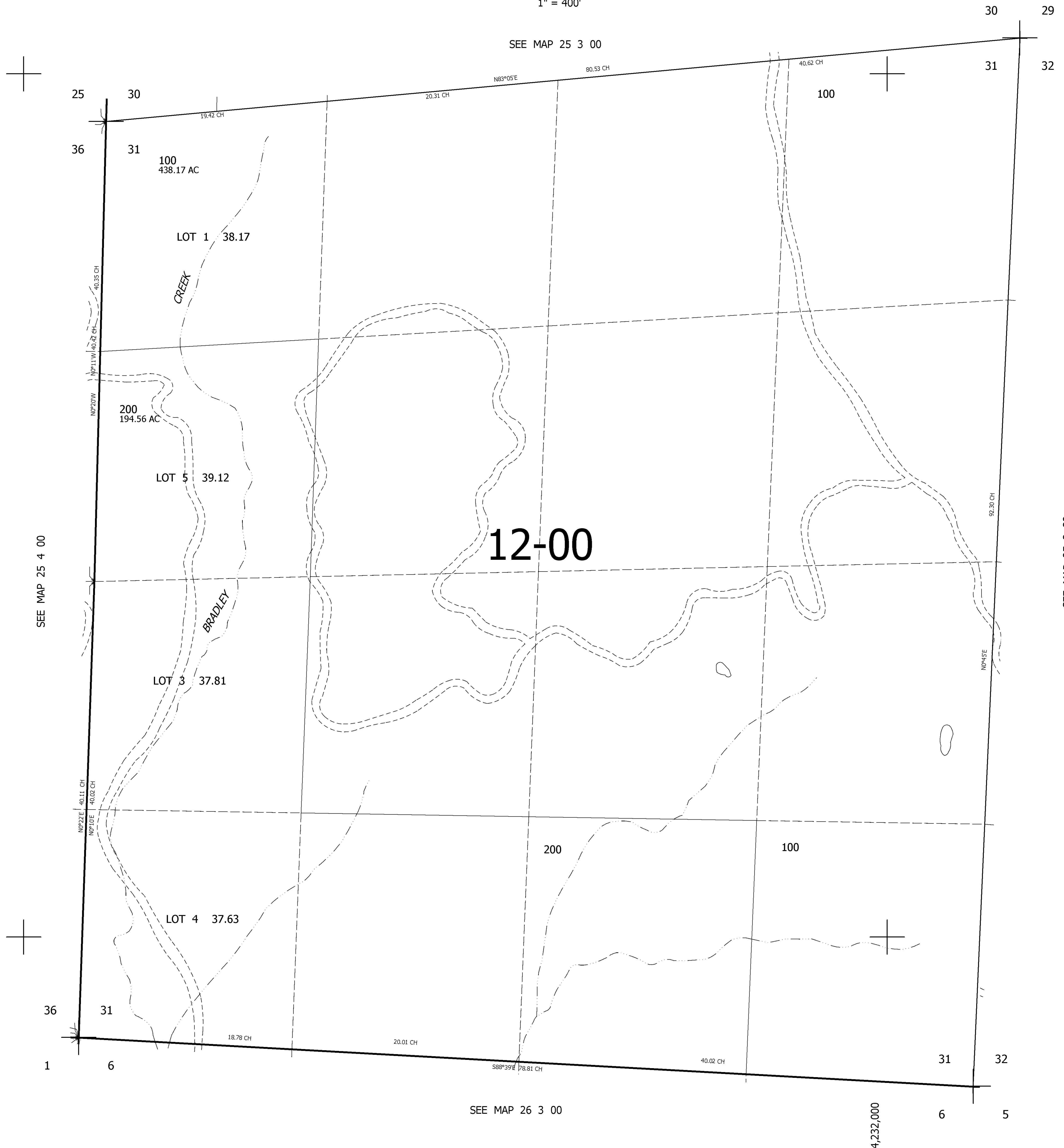
THIS MAP WAS PREPARED FOR ASSESSMENT PURPOSE ONLY.

SEC.31 T.25S. R.3W. W.M.  
DOUGLAS COUNTY

1" = 400'

REVISED ON

25 3 31



CANCELLED NOS  
200M1

SEE MAP 25 3 32

623,000

SEE MAP 26 3 00

4,232,000

25 3 31