

THIS MAP WAS PREPARED FOR ASSESSMENT PURPOSE ONLY.

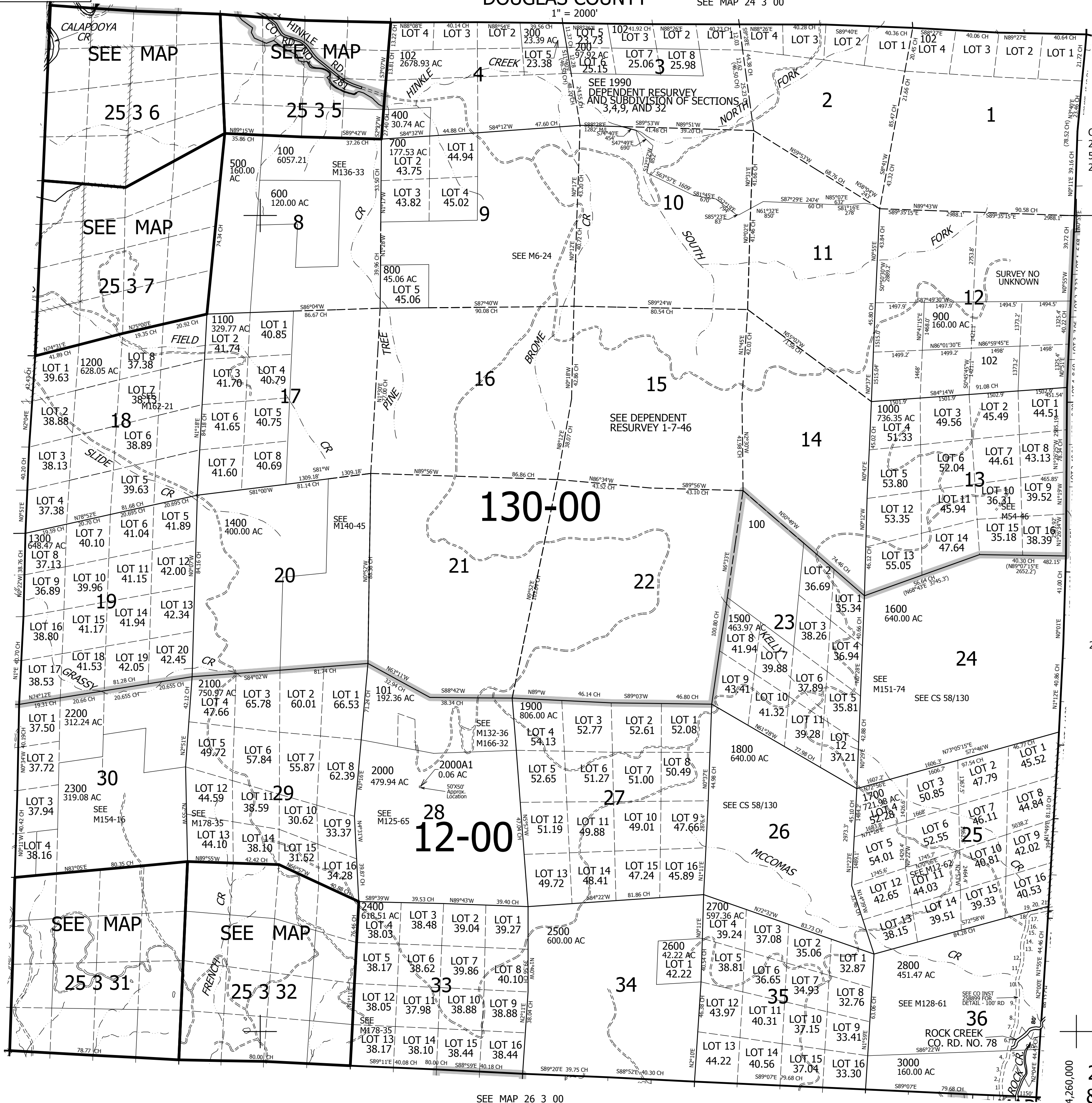
T.25S. R.3W. W.M. DOUGLAS COUNTY

SEE MAP 24 3 00

REVISED ON
7-24-17

25 3 00 & INDEX

1" = 2000'



CANCELLED NOS
2000M1 2900 2901
500M1 1200M1 1400M1
2200M1 103 104

- PARCELS
2800 & 3000
1. N3°W 380'
 2. N6°E 75'
 3. N10°E 475'
 4. N25°E 240'
 5. N10°E 290'
 6. N10°E 475'
 7. N15°30'E 360'
 8. N5°E 200'
 9. NORTH 725'
 10. N7°W 400'
 11. N14°30'E 530'
 12. N4°30'E 115'
 13. N1°W 400'
 14. N6°30'E 200'
 15. N1°30'E 355'
 16. N3°30'E 140'
 17. N5°W 200'
 18. N1°E 105'
 19. N26°E 25'
 20. N63°30'E 105'
 21. N7°E 475'
 22. N74°30'E 140'

SEE MAP 25 4 00

SEE MAP 25 2 00

SEE MAP 26 3 00

4,260,000
623,000
25 3 00
& INDEX