

THIS MAP WAS PREPARED FOR ASSESSMENT PURPOSE ONLY.

T.25S. R.1W. W.M. DOUGLAS COUNTY

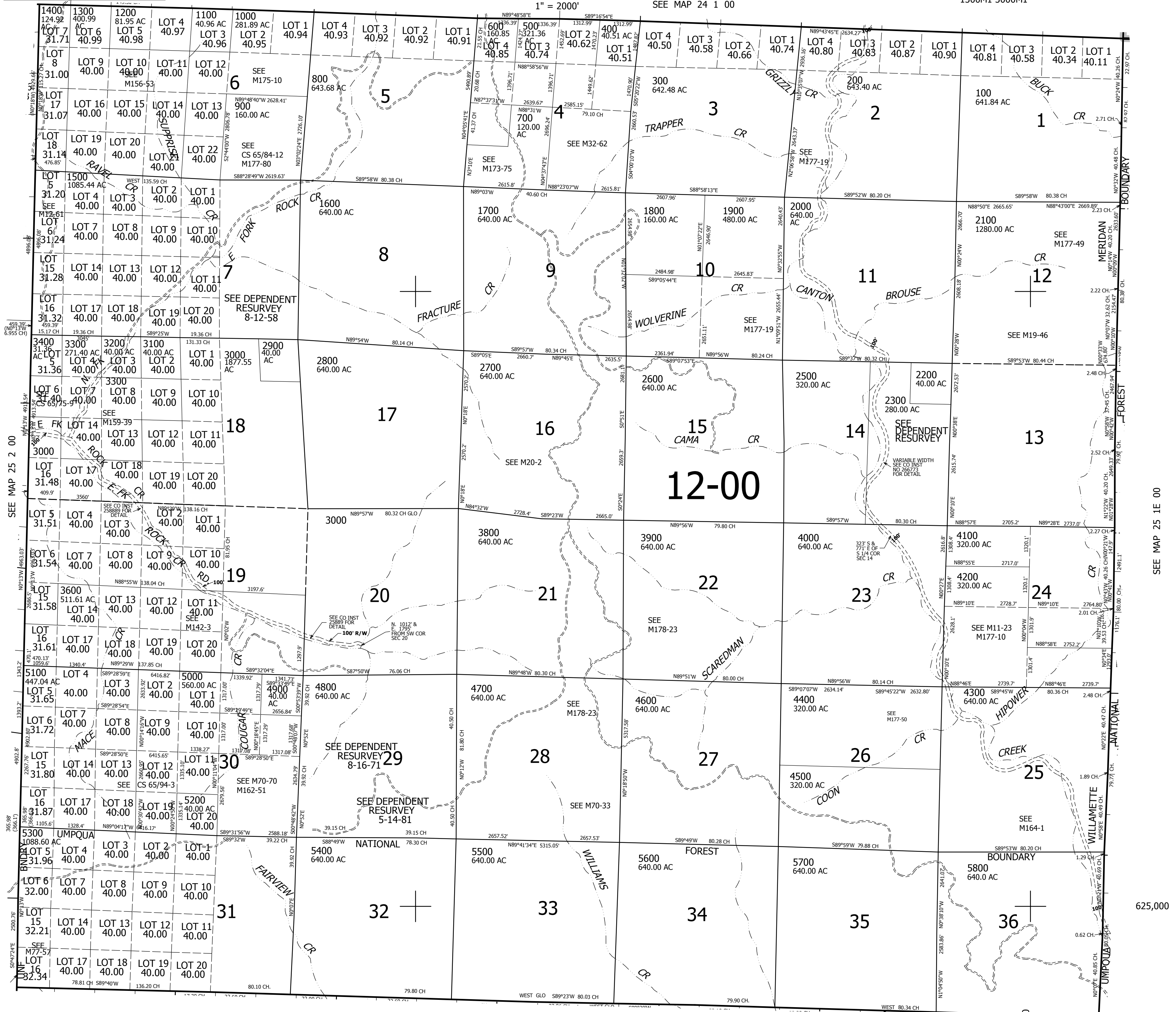
1" = 2000'

SEE MAP 24 1 00

REVISED ON

CANCELLED NOS
2400 3500 3700
1300M1 3000M1

25 1 00



SEE MAP 26 1 00

25 1 00

4-323,000