

THIS MAP WAS PREPARED FOR ASSESSMENT PURPOSE ONLY.

T.24S. R.9W. W.M. DOUGLAS COUNTY

REVISED ON

24 9 00

1" = 2000'

SEE MAP 23 9 00

CANCELLED NOS 100M1 100M2

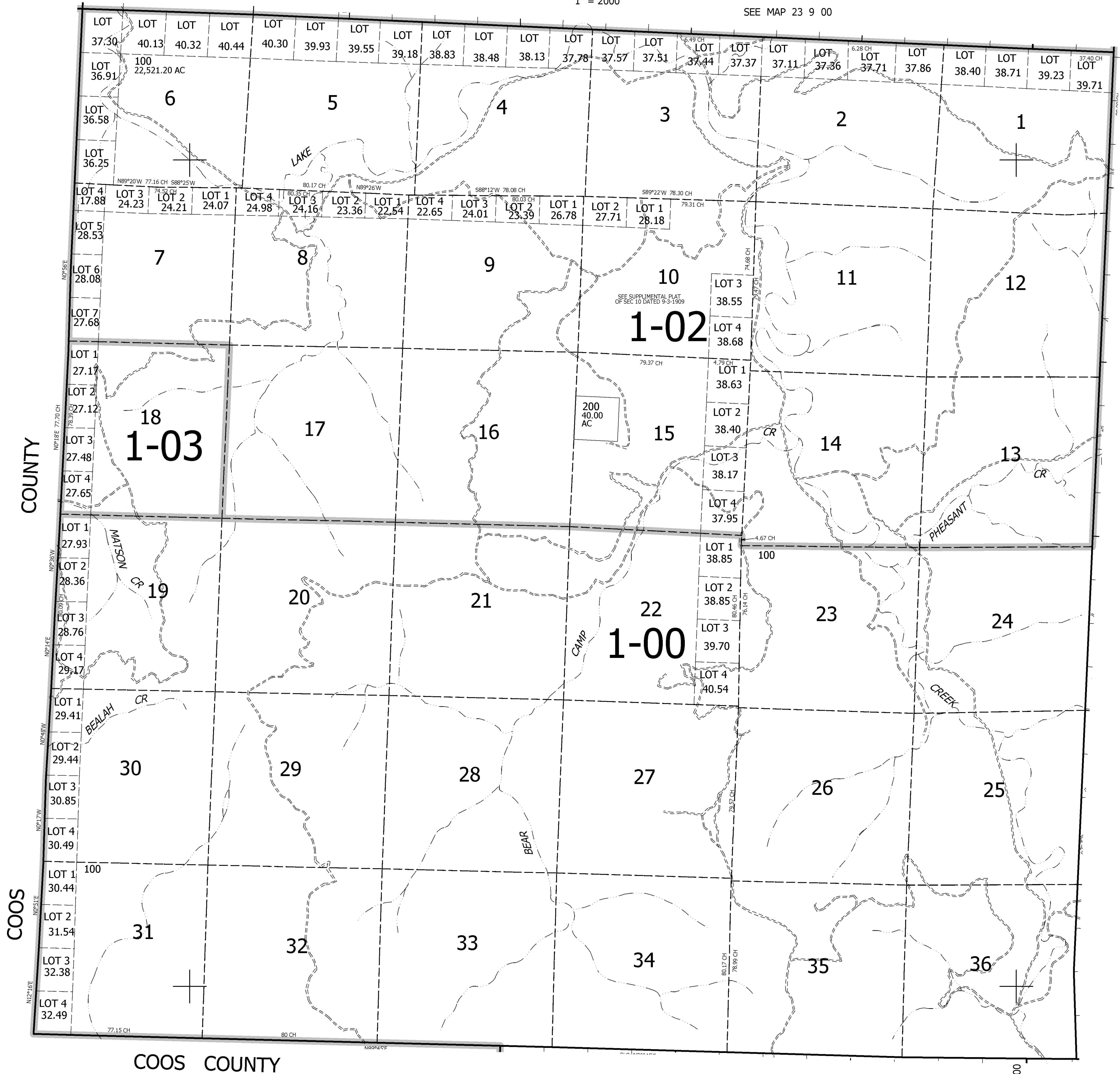
SEE MAP 24 8 00

662,000

SEE MAP 25 9 00

24 9 00

4,070,000



COOS COUNTY

COOS COUNTY

COOS COUNTY