

THIS MAP WAS PREPARED FOR ASSESSMENT PURPOSE ONLY.

SEC.32 T.24S. R.7W. W.M. DOUGLAS COUNTY

1" = 400'

REVISED ON 7-26-22

24 7 32

SEE MAP 24 7 29

30

29

31

29

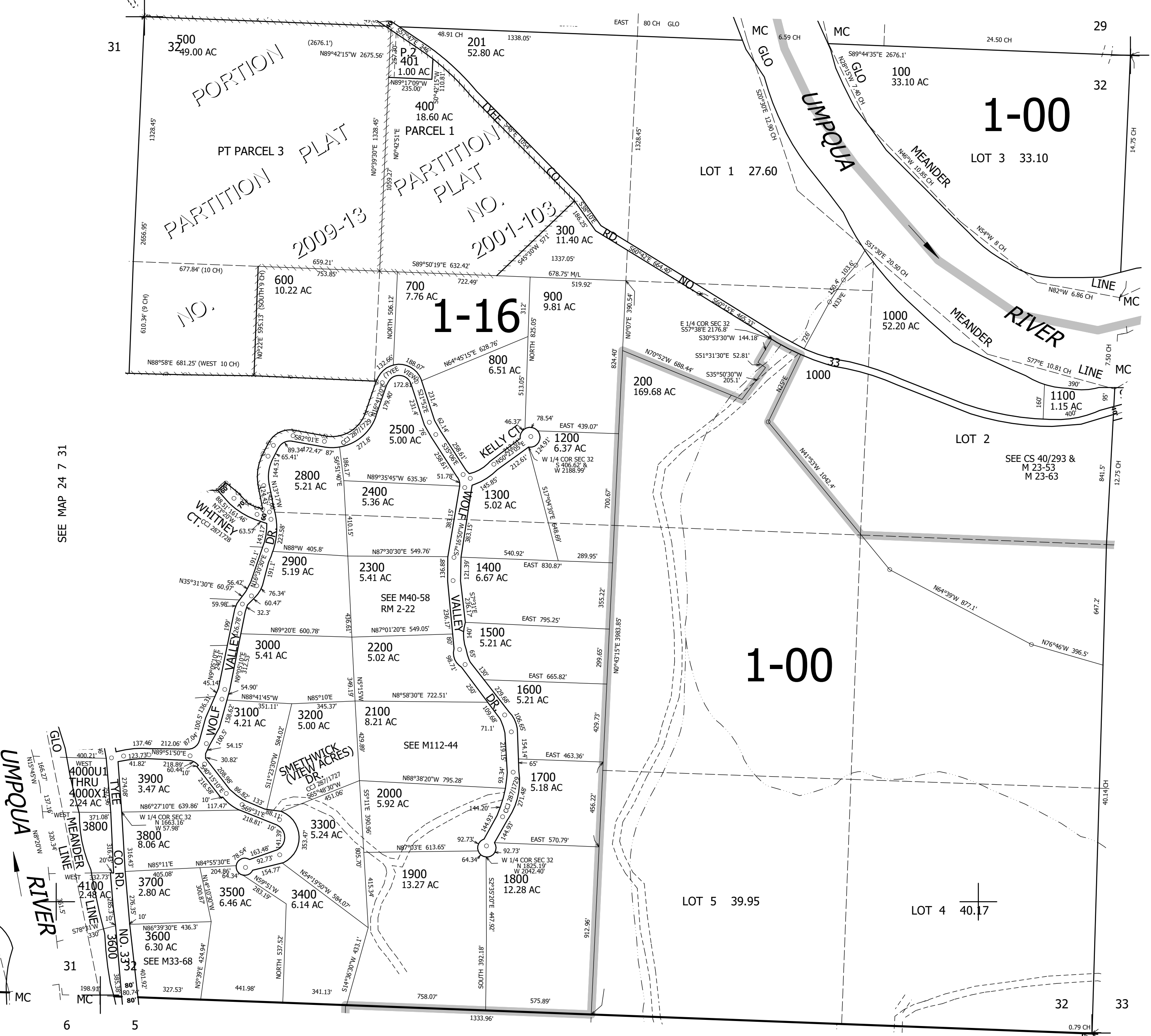
28

32

33

SEE MAP 24 7 31

SEE MAP 24 7 33



CANCELLED NOS 2700 100M1 2600

659,000

SEE MAP 25 7 5

4,112,000

24 7 32