

THIS MAP WAS PREPARED FOR ASSESSMENT PURPOSE ONLY.

Upper Left:
123°35'17"W 43°26'57"N
4101458E 664752N ft

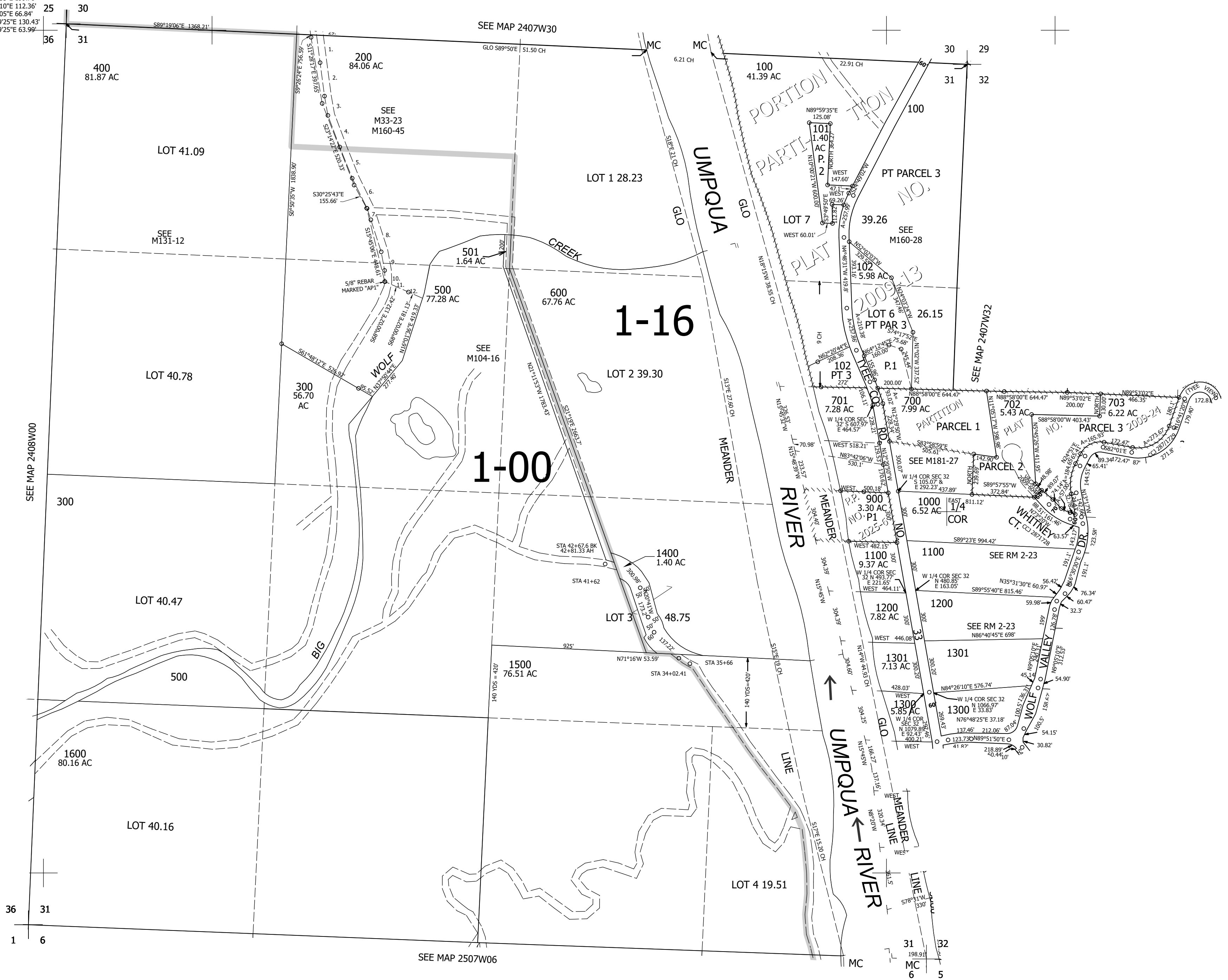
SEC.31 T.24S. R.07W. W.M.
DOUGLAS COUNTY
1" = 400'

Date Exported 2025-07-22

240731

- PARCEL 200
1. S9°34'26"E 199.76'
 2. S9°40'29"E 200.01'
 3. S12°15'44"E 116.43'
 4. S22°48'07"E 200.08'
 5. S23°54'35"E 199.64'
 6. S28°28'18"E 199.64'
 7. S20°37'08"E 70.93'
 8. S20°05'55"E 199.70'
 9. S12°34'10"E 112.36'
 10. S4°16'05"E 66.84'
 11. S68°19'25"E 130.43'
 12. S68°19'25"E 63.99'

CANCELLED NOS:
300M1 700M1 800M1
801 802 103
301 803 800
302



240731

Lower Right:
123°33'27"W 43°25'51"N
4109307E 657796N ft