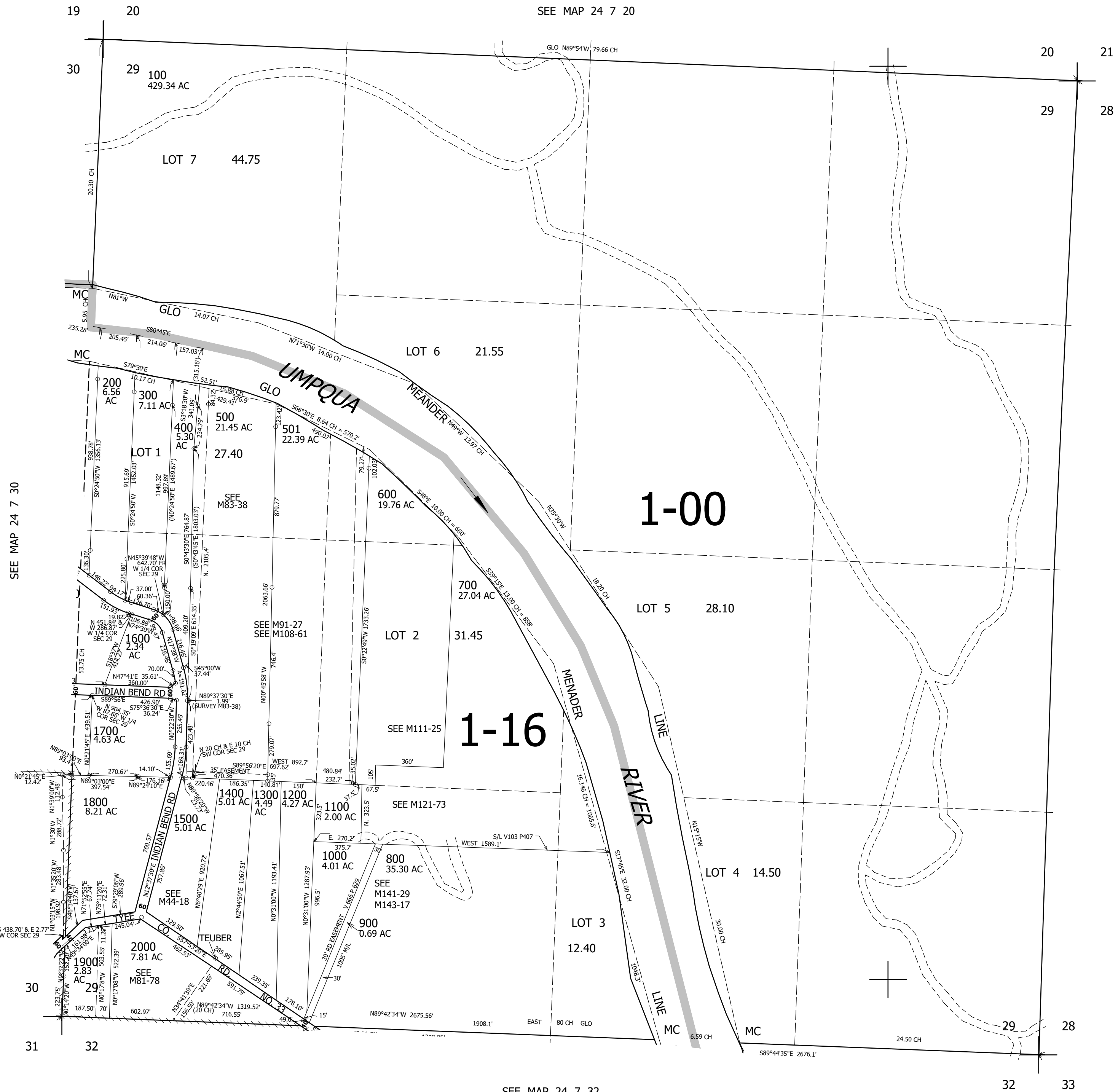


THIS MAP WAS PREPARED FOR ASSESSMENT PURPOSE ONLY.

SEC.29 T.24S. R.7W. W.M.
DOUGLAS COUNTY
1" = 400'

REVISED ON
3-24-22

24 7 29



CANCELLED NOS
100M1

SEE MAP 24 7 28

SEE MAP 24 7 30

SEE MAP 24 7 32

4,112,000

24 7 29

664,000