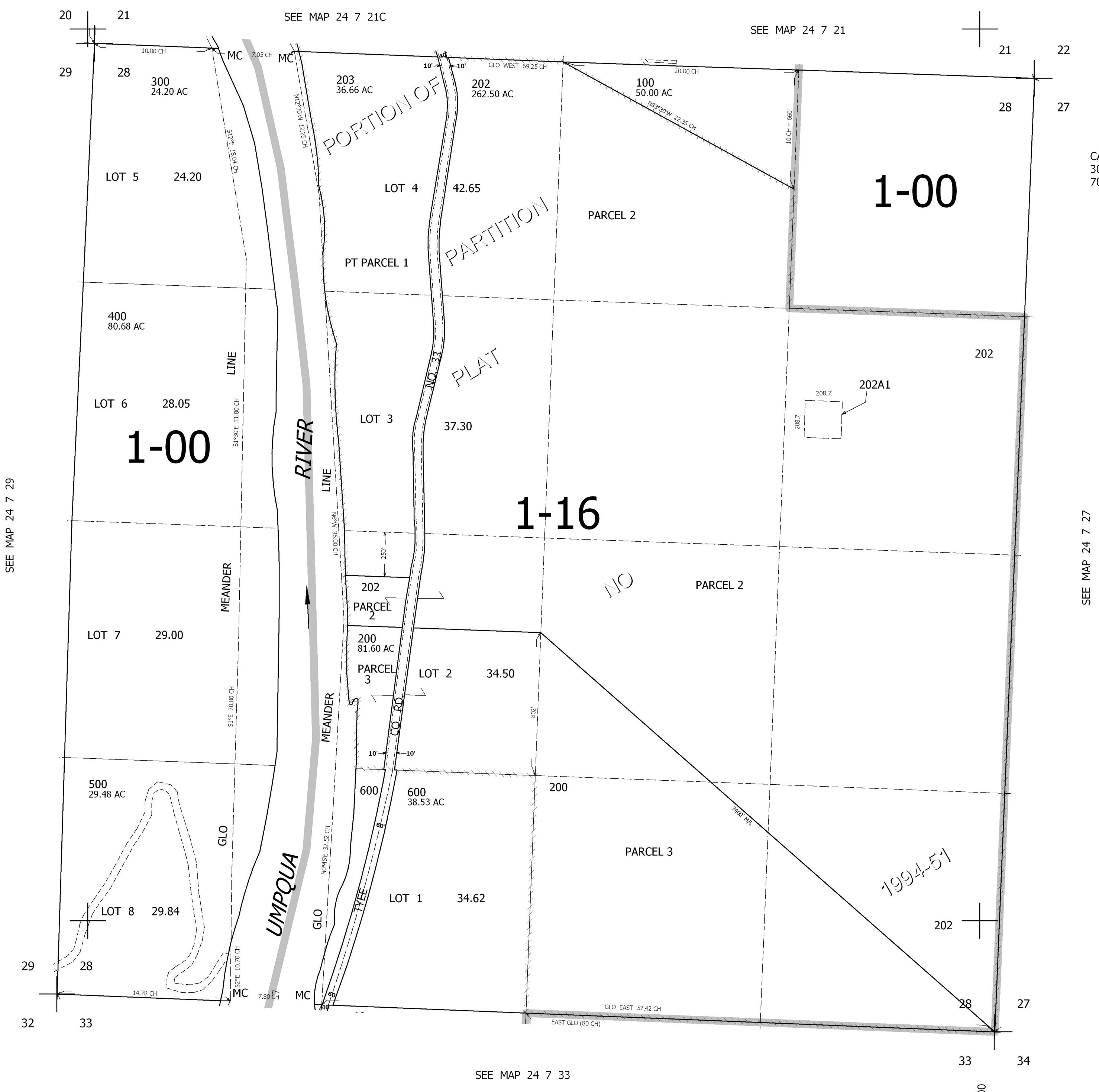


THIS MAP WAS PREPARED FOR ASSESSMENT PURPOSE ONLY.

SEC.28 T.24S. R.7W. W.M.
DOUGLAS COUNTY
1" = 400'

REVISED ON
3-4-10

24 7 28



CANCELLED NOS
300M1 500M1 201
700

SEE MAP 24 7 29

SEE MAP 24 7 27

SEE MAP 24 7 33

664,000

4,118,000

24 7 28