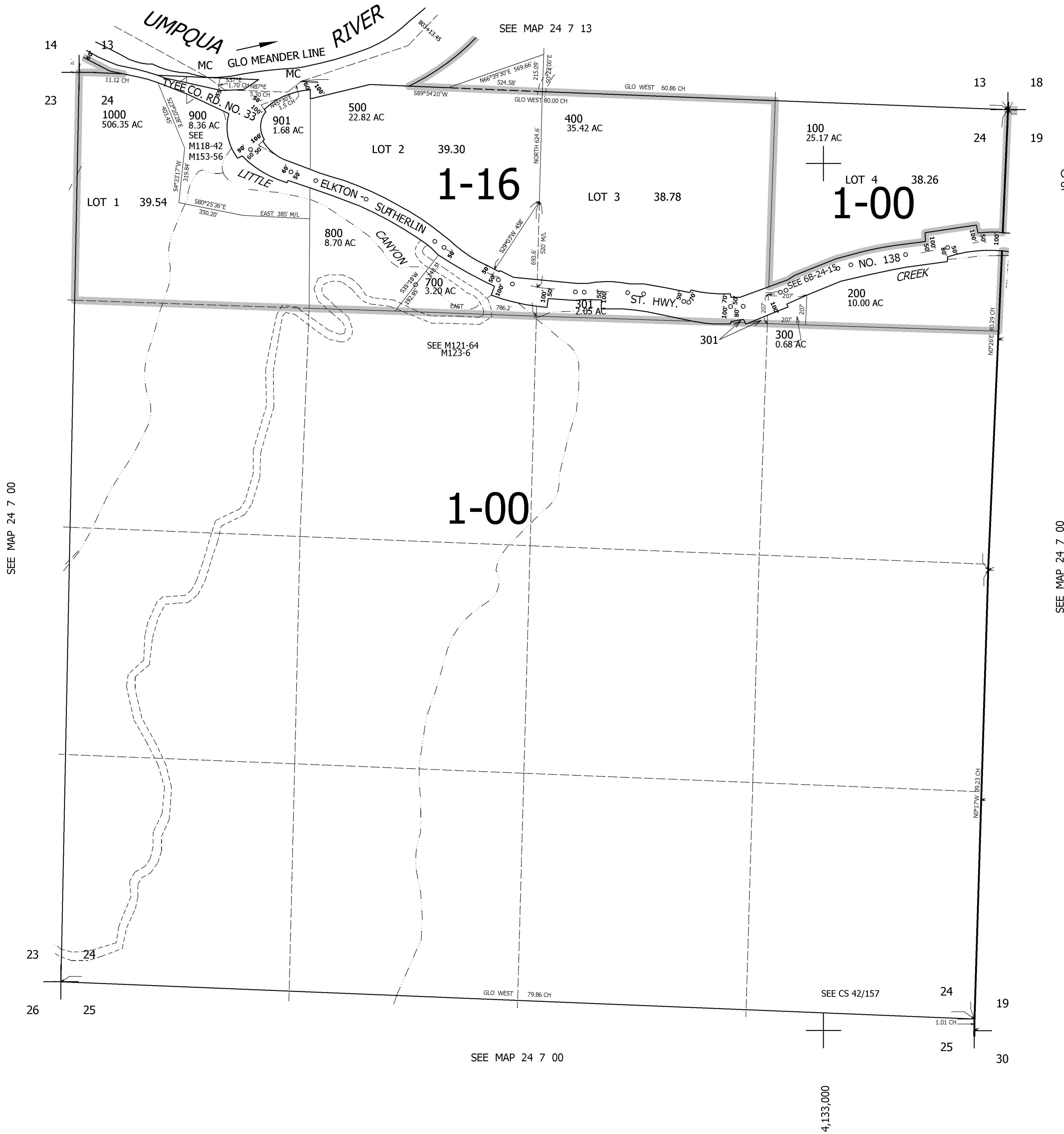


THIS MAP WAS PREPARED FOR ASSESSMENT PURPOSE ONLY.

SEC.24 T.24S. R.7W. W.M.  
DOUGLAS COUNTY  
1" = 400'

REVISED ON  
11-23-99

24 7 24



CANCELLED NOS  
902 600

SEE MAP 24 7 00

SEE MAP 24 7 00

SEE MAP 24 7 00

4,133,000

668,000

24 7 24