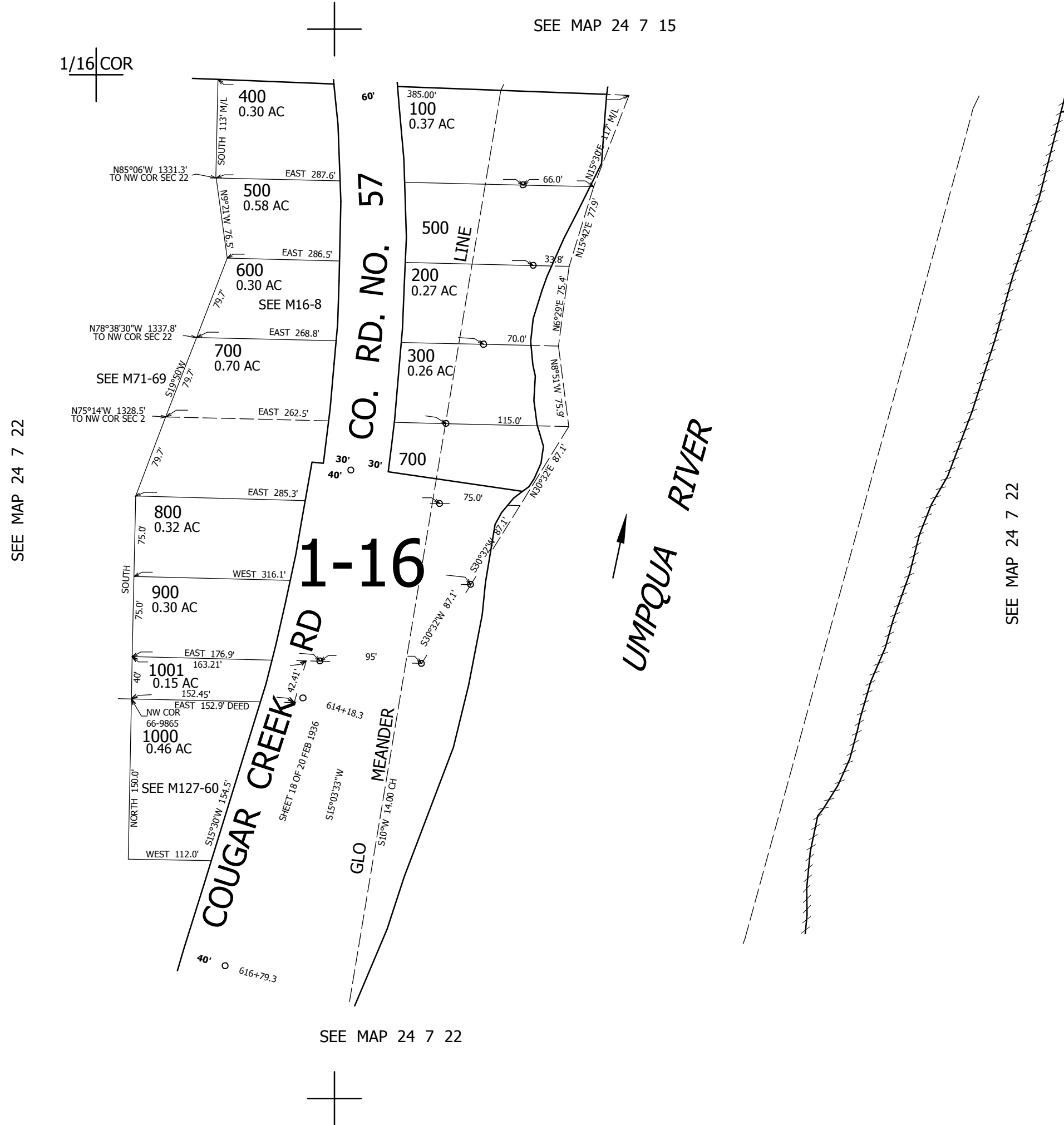


THIS MAP WAS PREPARED FOR ASSESSMENT PURPOSE ONLY.

NE1/4 NW1/4 SEC.22 T.24S. R.7W. W.M.
DOUGLAS COUNTY
1" = 100'

REVISED ON
3-10-20

24 7 22BA



CANCELLED NOS

673,000

1/16 COR

4,121,000

24 7 22BA