

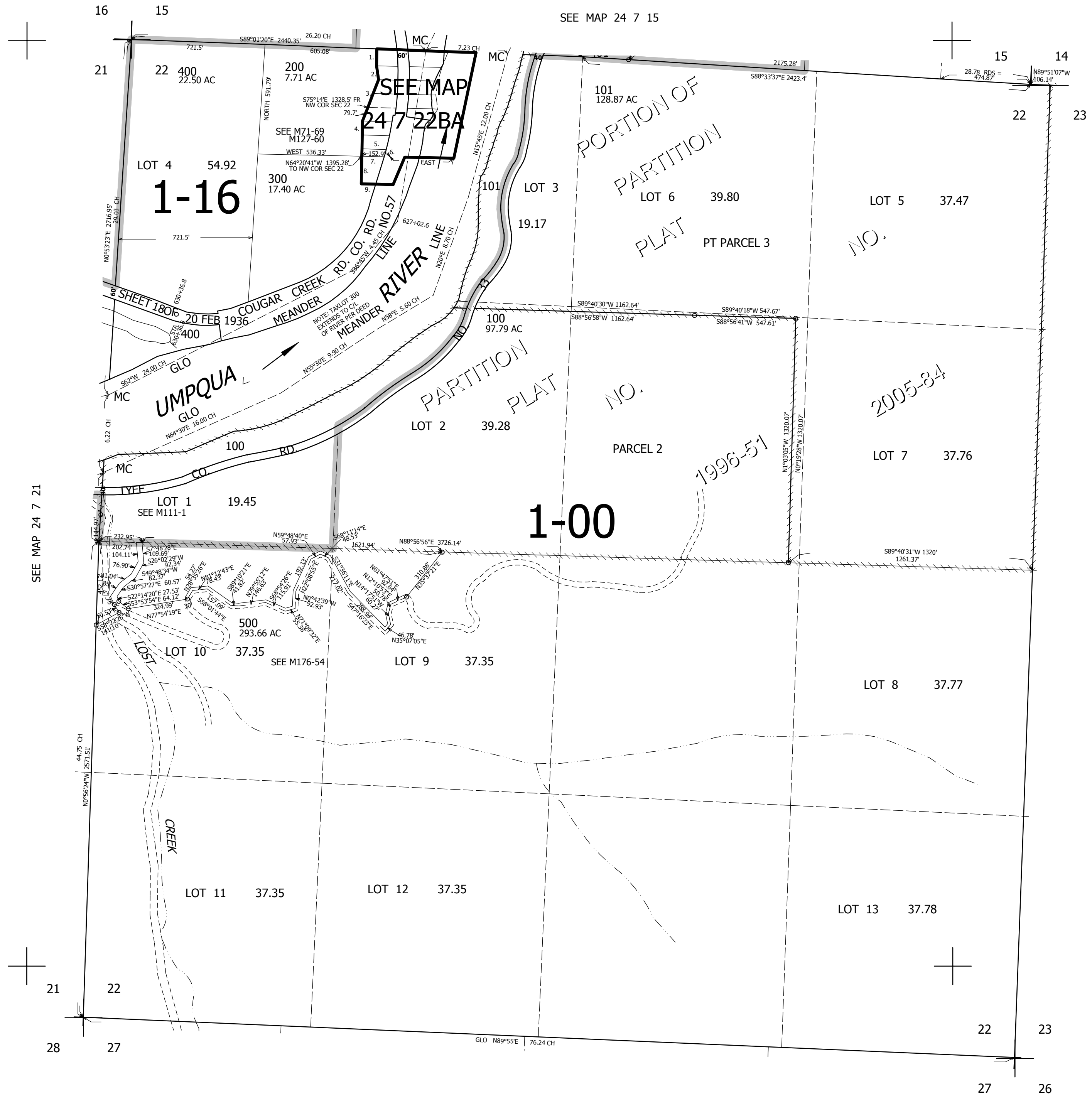
THIS MAP WAS PREPARED FOR ASSESSMENT PURPOSE ONLY.

SEC.22 T.24S. R.7W. W.M.  
DOUGLAS COUNTY

1" = 400'

REVISED ON  
3-4-20

24 7 22  
& INDEX



CANCELLED NOS  
201 501

PARCELS 200 & 300

1. SOUTH 91.1'
2. S9°08'41"E 77.01'
3. S19°50'W 238.47'
4. SOUTH 150'
5. EAST 163.21'
6. S15°03'33"W 41.42'
7. WEST 152.45'
8. SOUTH 150'
9. EAST 114'

24 7 22  
& INDEX