

THIS MAP WAS PREPARED FOR ASSESSMENT PURPOSE ONLY.

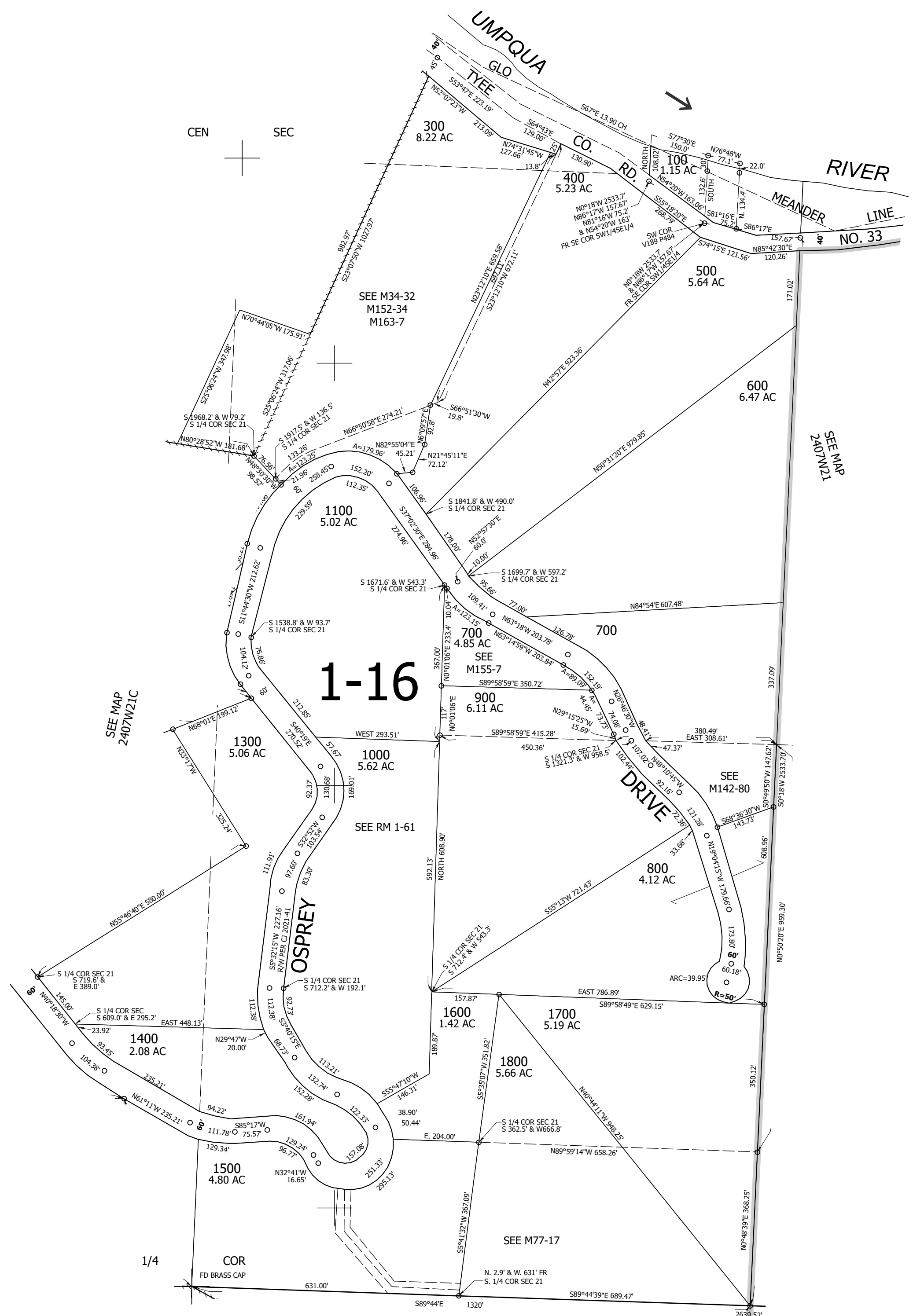
Upper Left:
123°32'26"W 43°28'14"N
4114338E 672049N ft

SE1/4 SEC.21 T.24S. R.07W. W.M.
DOUGLAS COUNTY
1" = 200'

Date Exported 2023-08-16

240721D

CANCELLED NOS:
200 1501 801
701 301 401
702 1200 802
1701 1801



1/4 COR
FD BRASS CAP

SEE MAP
2407W28

240721D

Lower Right:
123°31'31"W 43°27'41"N
4118263E 668571N ft