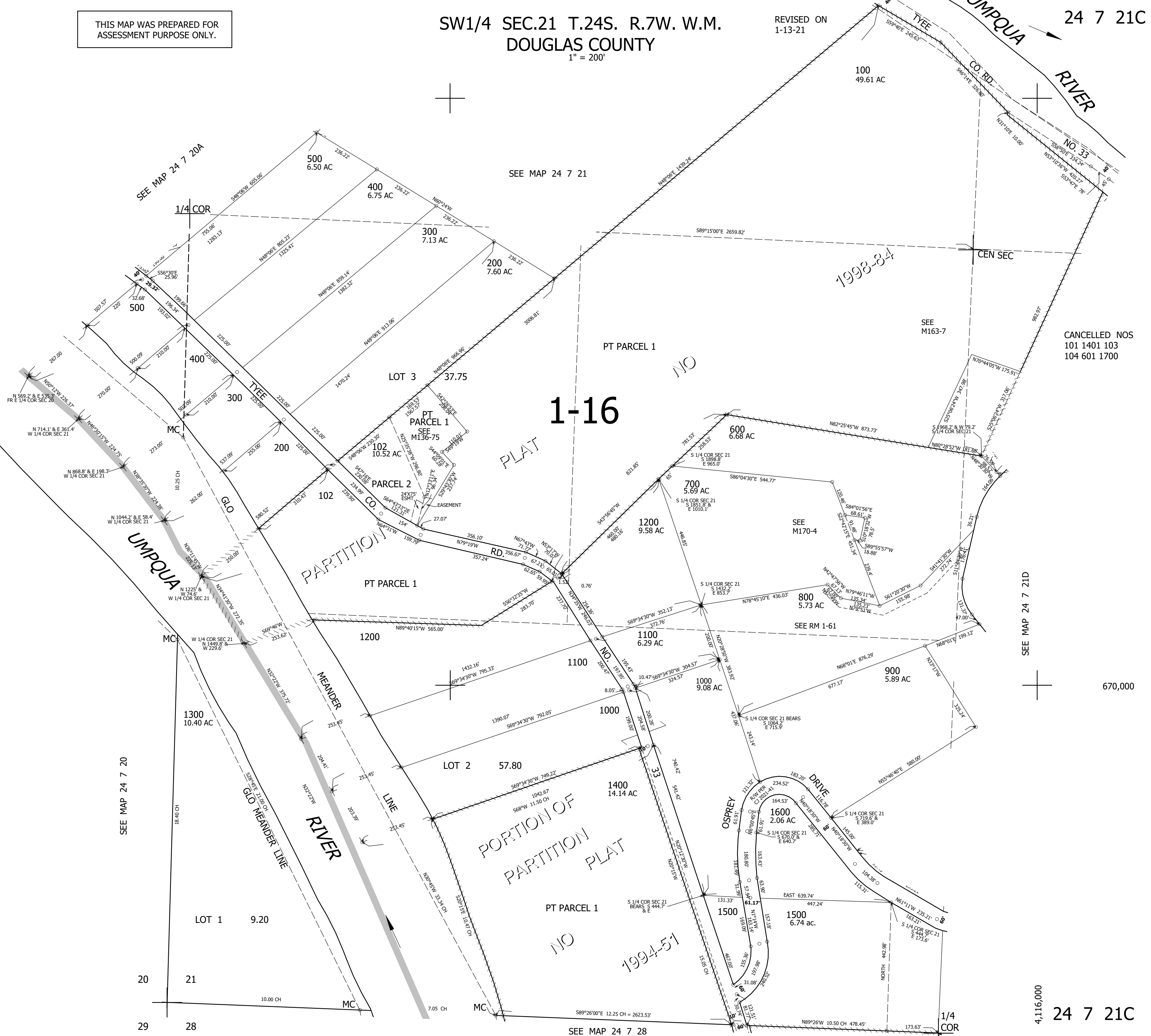


THIS MAP WAS PREPARED FOR ASSESSMENT PURPOSE ONLY.

SW1/4 SEC.21 T.24S. R.7W. W.M.  
DOUGLAS COUNTY  
1" = 200'

REVISED ON  
1-13-21

24 7 21C



CANCELLED NOS  
101 1401 103  
104 601 1700

SEE MAP 24 7 21D

670,000

SEE MAP 24 7 20

SEE MAP 24 7 28

4,116,000

24 7 21C