

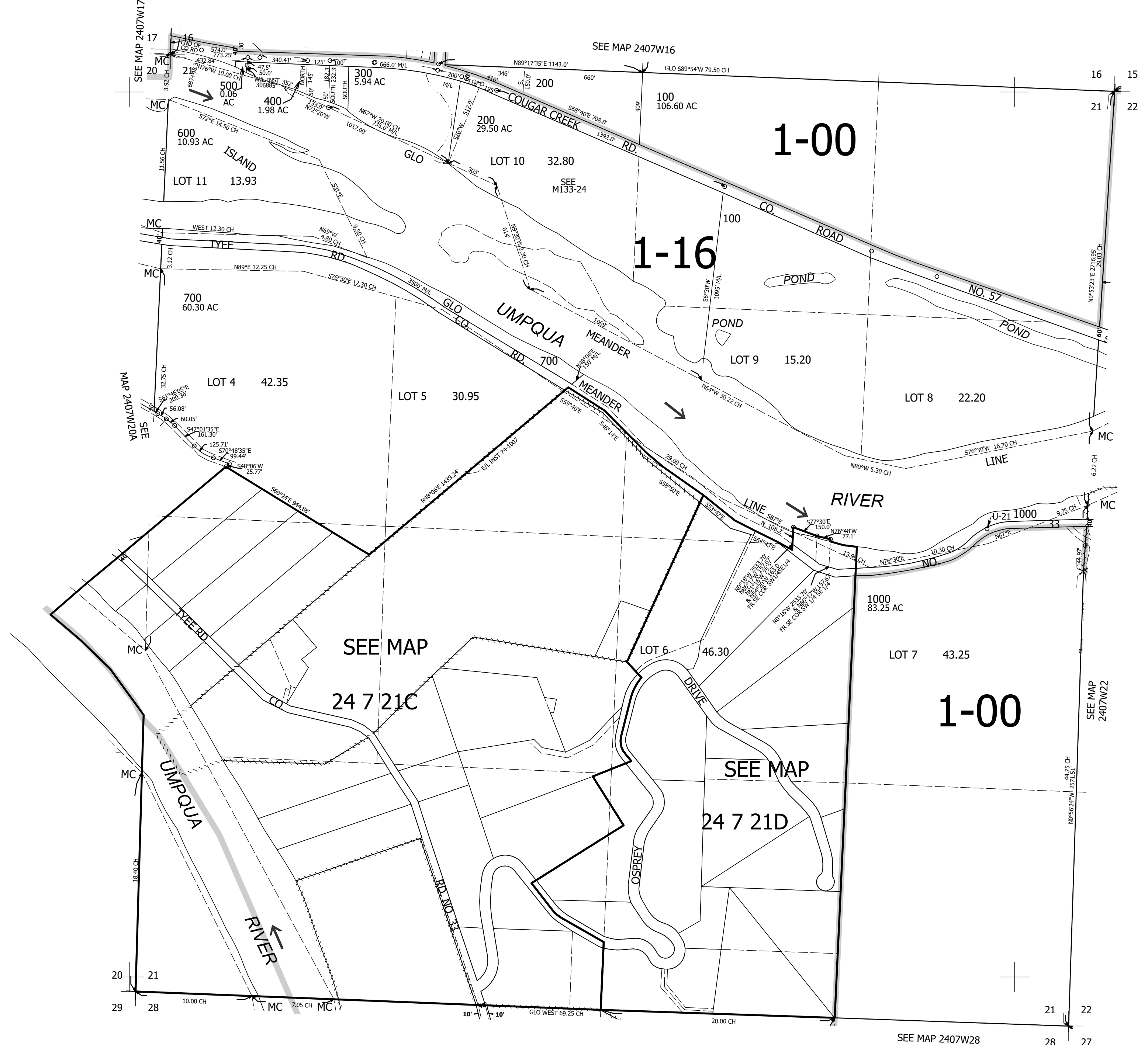
THIS MAP WAS PREPARED FOR ASSESSMENT PURPOSE ONLY.

Upper Left:
123°33'5"W 43°28'42"N
4111529E 675008N ft

SEC.21 T.24S. R.07W. W.M.
DOUGLAS COUNTY
1" = 400'

Date Exported 2025-03-13

CANCELLED NOS:
900 800



SEE MAP 2407W28

Lower Right:
123°31'16"W 43°27'36"N
4119378E 668053N ft