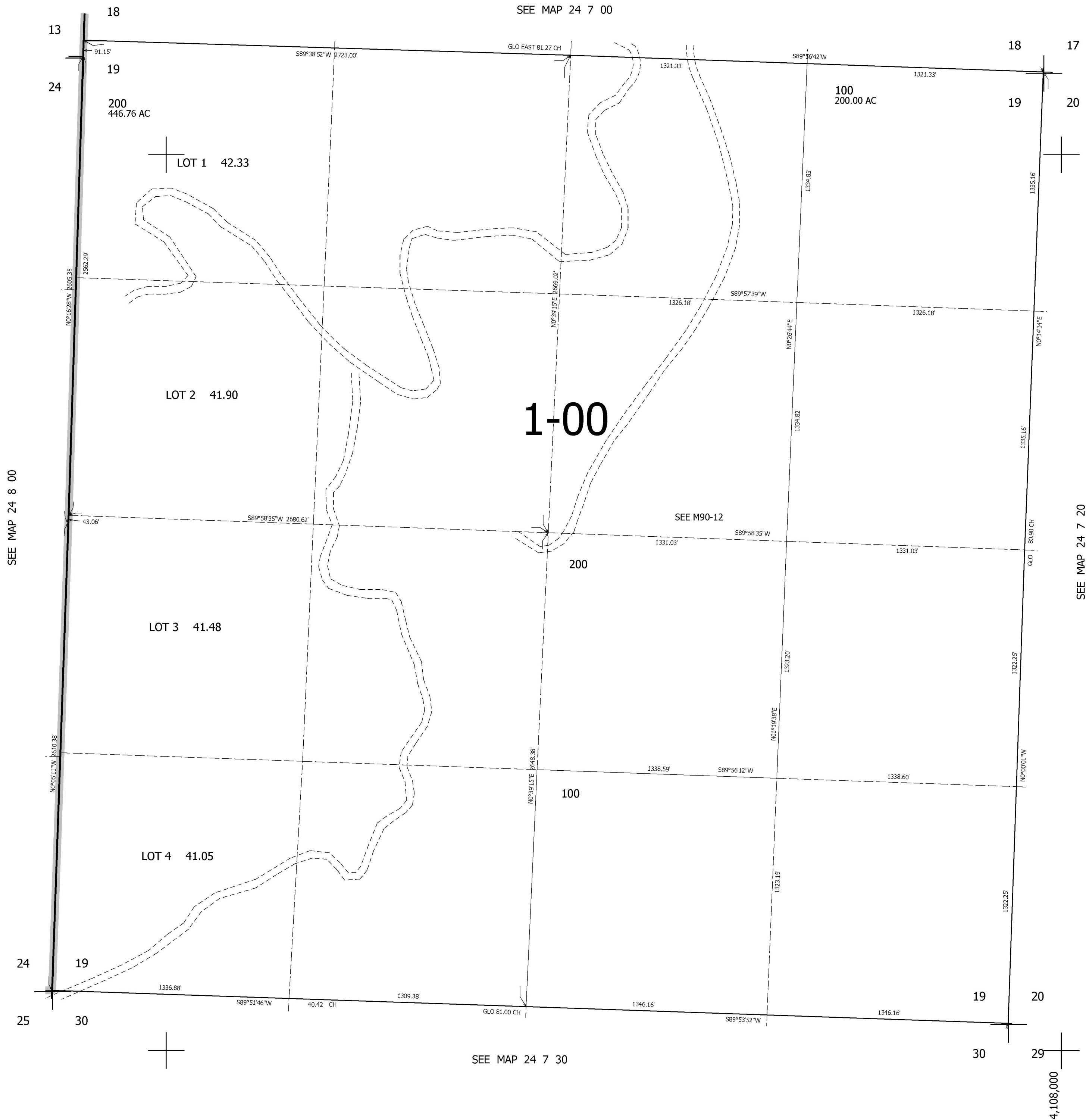


THIS MAP WAS PREPARED FOR ASSESSMENT PURPOSE ONLY.

SEC.19 T.24S. R.7W. W.M.
DOUGLAS COUNTY
1" = 400'

REVISED ON
5-6-96

24 7 19



CANCELLED NOS
100M1

SEE MAP 24 8 00

SEE MAP 24 7 20

SEE MAP 24 7 30

669,000

4,108,000

24 7 19