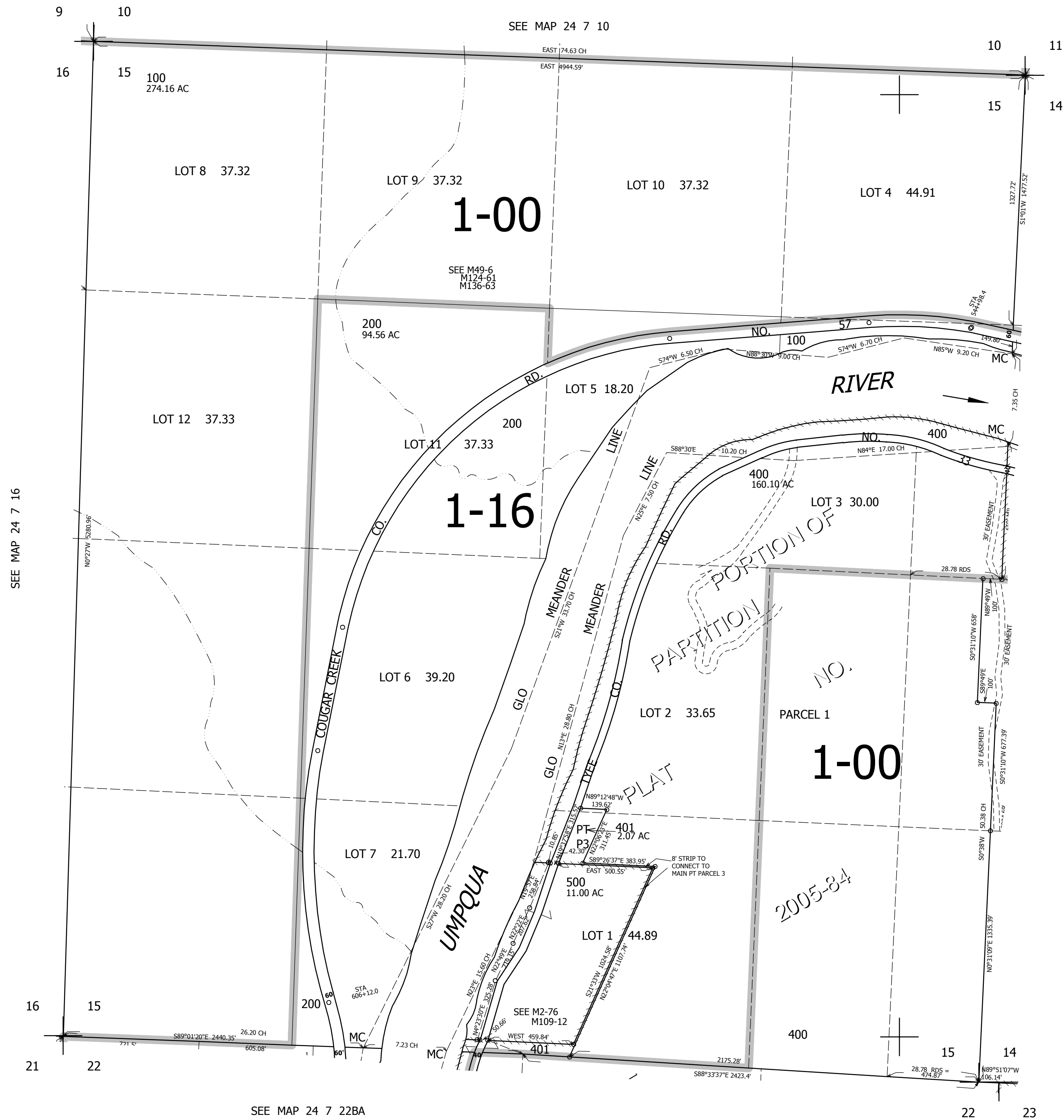


THIS MAP WAS PREPARED FOR ASSESSMENT PURPOSE ONLY.

SEC.15 T.24S. R.7W. W.M.  
DOUGLAS COUNTY  
1" = 400'

24 7 15

REVISED ON  
3-10-20



CANCELLED NOS  
300 402

SEE MAP 24 7 16

SEE MAP 24 7 14

SEE MAP 24 7 22BA

SEE MAP 24 7 22

674,000

4,123,000

24 7 15