

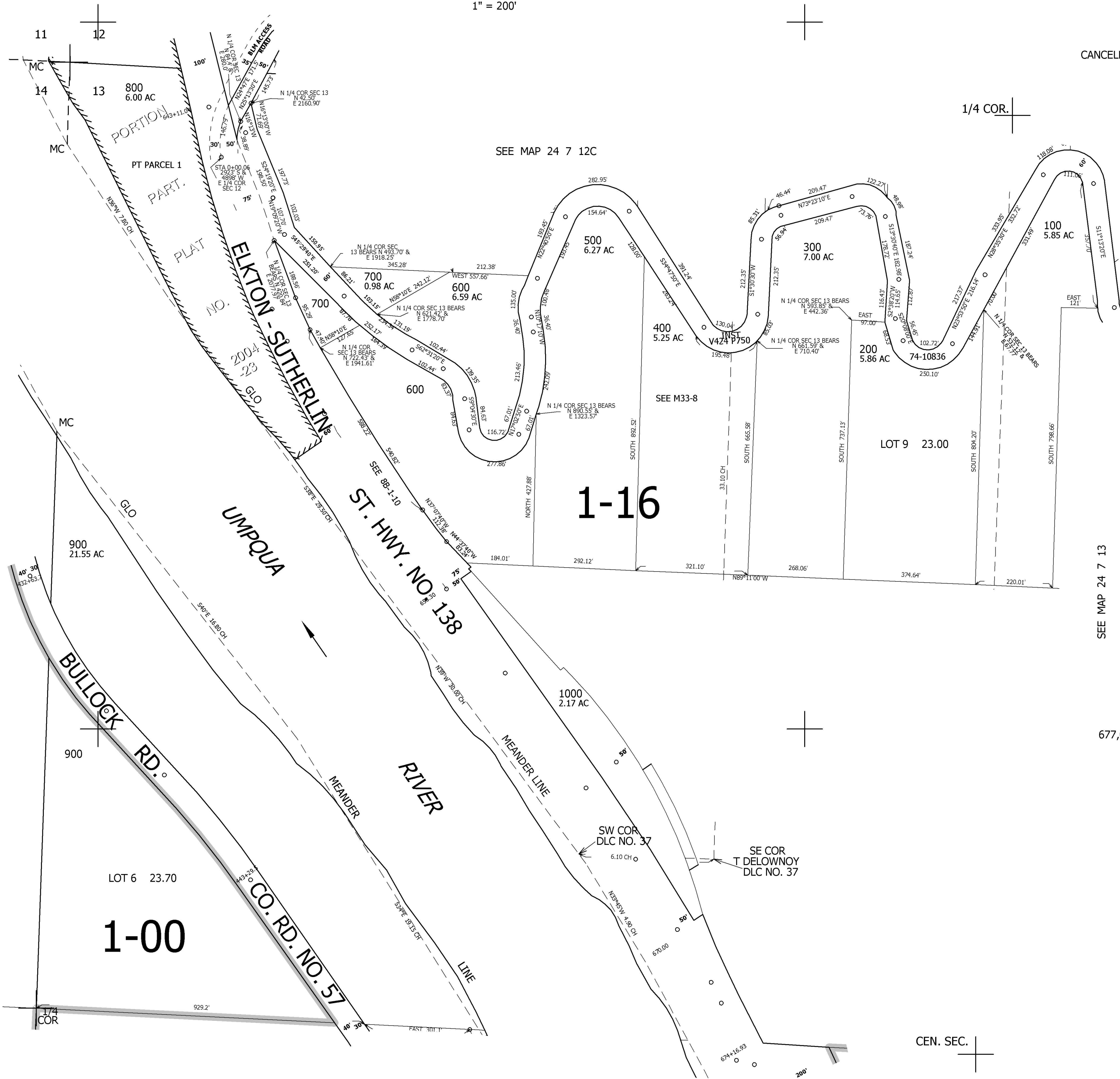
THIS MAP WAS PREPARED FOR ASSESSMENT PURPOSE ONLY.

NW1/4 SEC.13 T.24S. R.7W. W.M. DOUGLAS COUNTY

REVISED ON 6-2-04

1" = 200'

CANCELLED NOS



SEE MAP 24 7 14

SEE MAP 24 7 13

677,000

SEE MAP 24 7 13C