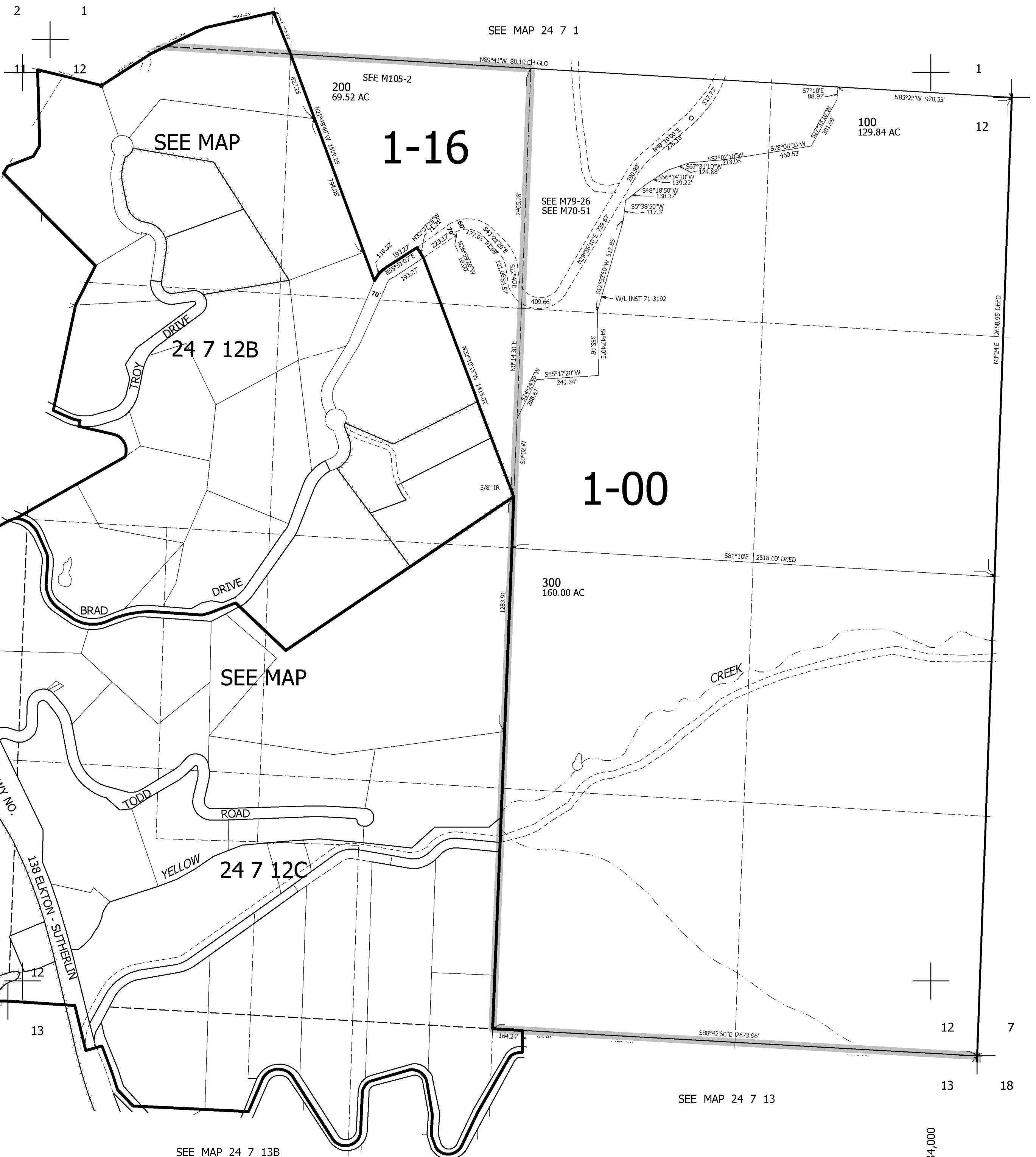


THIS MAP WAS PREPARED FOR ASSESSMENT PURPOSE ONLY.

SEC.12 T.24S. R.7W. W.M.  
DOUGLAS COUNTY  
1" = 400'

REVISED ON  
6-6-97

24 7 12  
& INDEX



SEE MAP 24 7 11A

SEE MAP 24 7 1

SEE M105-2  
200  
69.52 AC

1-16

SEE M79-26  
SEE M70-51

100  
129.84 AC

CANCELLED NOS  
100M1 300M1

24 7 12B

1-00

300  
160.00 AC

SEE MAP 24 6 7

SEE MAP

24 7 12C

SEE MAP 24 7 11

SEE MAP 24 7 13

SEE MAP 24 7 13B

679,000

4,134,000

24 7 12  
& INDEX