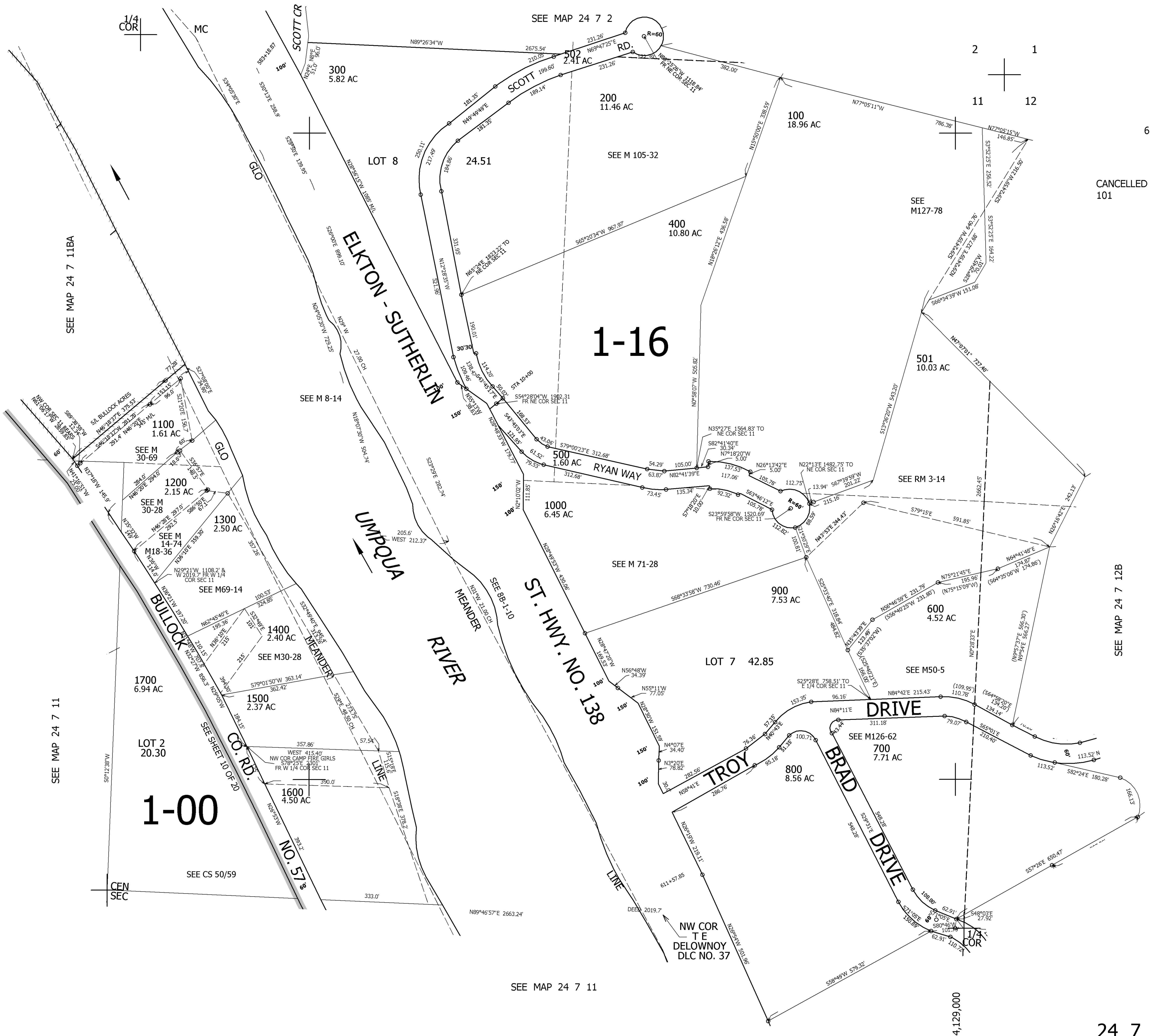


THIS MAP WAS PREPARED FOR ASSESSMENT PURPOSE ONLY.

NE1/4 SEC.11 T.24S. R.7W. W.M.  
DOUGLAS COUNTY  
1" = 200'

REVISED ON  
12-2-99

24 7 11A



SEE MAP 24 7 11BA

SEE MAP 24 7 11

SEE MAP 24 7 11

CANCELLED NOS  
101

SEE MAP 24 7 12B

24 7 11A