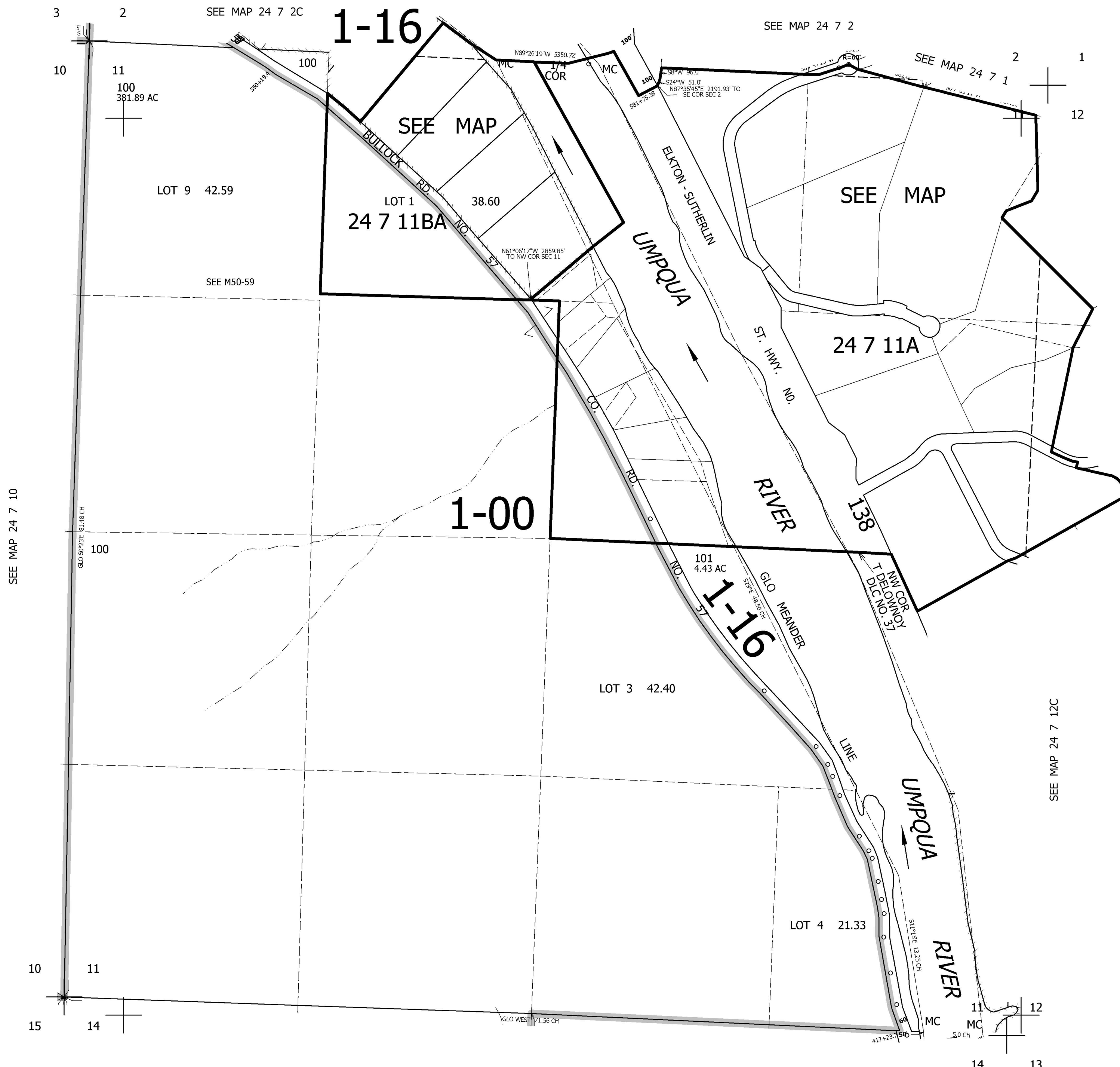


THIS MAP WAS PREPARED FOR ASSESSMENT PURPOSE ONLY.

SEC.11 T.24S. R.7W. W.M.
DOUGLAS COUNTY
1" = 400'

REVISED ON
6-6-97

24 7 11
& INDEX



CANCELLED NOS

SEE MAP 24 7 12B

SEE MAP 24 7 10

SEE MAP 24 7 12C

SEE MAP 24 7 14

679,000

4,129,000

24 7 11
& INDEX