

THIS MAP WAS PREPARED FOR ASSESSMENT PURPOSE ONLY.

SEC.3 T.24S. R.7W. W.M. DOUGLAS COUNTY

REVISED ON
9-19-16

24 7 3

1" = 400'

SEE MAP 23 7 34

CANCELLED NOS
2400M1

34 35

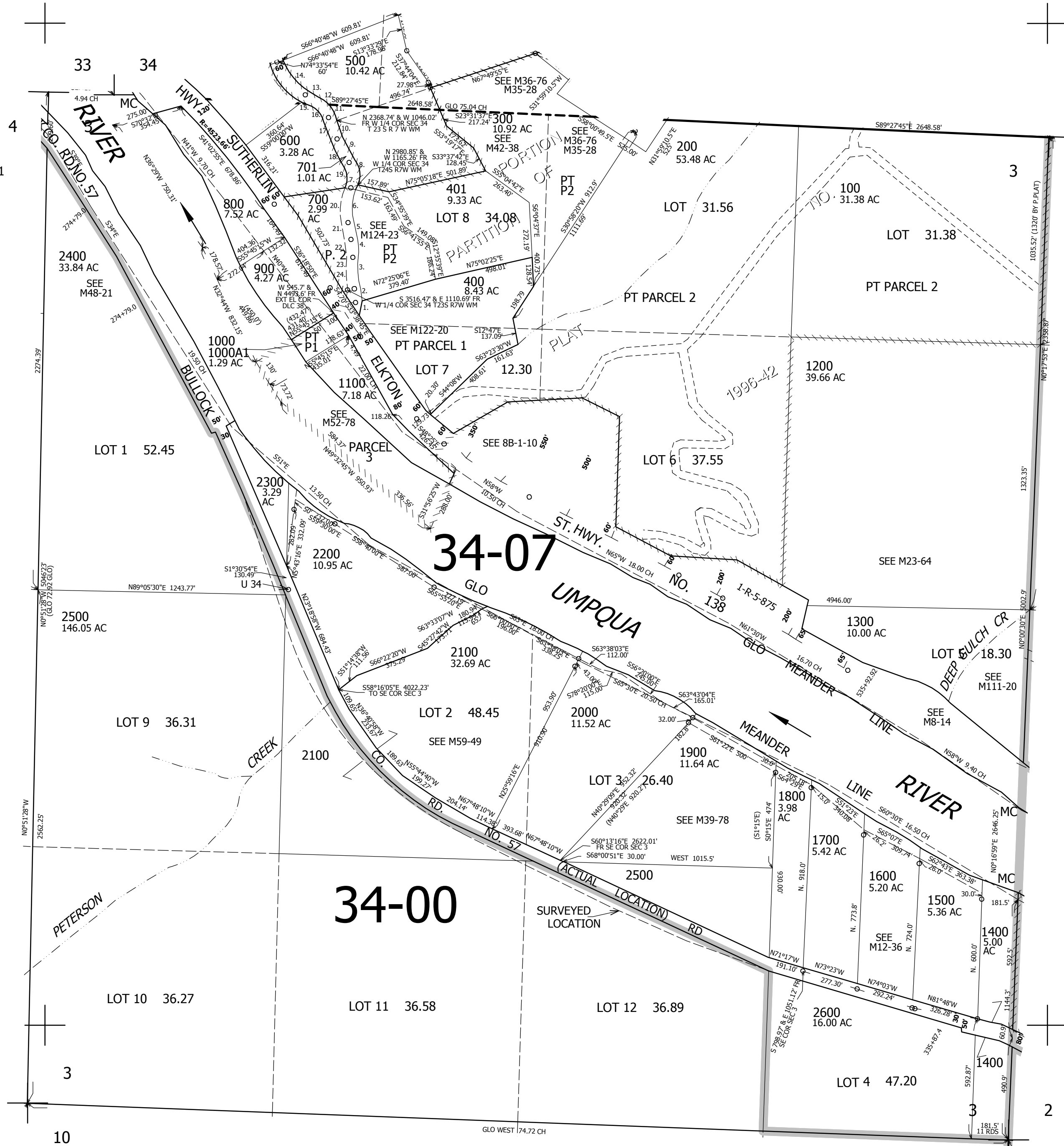
PARCEL 700 & 701

1. R=116.35' L=85.54'
2. N11°54'08"W 67.61'
3. R=583.88' L=143.33'
4. R=405.44' L=102.2'
5. N12°16'48"W 87.95'
6. R=295.23' L=156.62'
7. R=173.71' L=25.02'
8. R=173.71' L=127.24'
9. R=932.45' L=127.24'
10. N24°16'50"W 85.47'
11. N24°16'50"W 25'
12. R=203.62' L=134.88'
13. N62°14'W 50.13'
14. R=277.01' L=226.26'
15. S62°14'E 50.13'
16. R=143.62' L=95.13'
17. S24°16'50"E 110.47'
18. R=992.45' L=135.51'
19. R=113.71' L=99.67'
20. R=355.23' L=188.45'
21. S12°16'48"E 87.95'
22. R=345.44' L=87.07'
23. R=643.88' L=158.05'
24. S56°21'06"W 26.15'

SEE MAP 24 7 4

SEE MAP 24 7 2

SEE MAP 24 7 2C



34-00

34-07

LOT 1 52.45

LOT 9 36.31

LOT 10 36.27

LOT 2 48.45

LOT 11 36.58

LOT 12 36.89

LOT 6 37.55

LOT 3 26.40

LOT 4 47.20

LOT 31.38

PT PARCEL 2

1200 39.66 AC

1300 10.00 AC

1800 3.98 AC

1700 5.42 AC

1600 5.20 AC

1500 5.36 AC

1400 5.00 AC

1400 5.00 AC

1400 5.00 AC

1400 5.00 AC

2400 33.84 AC

1000 1000A1 1.29 AC

2300 3.29 AC

2500 146.05 AC

2200 10.95 AC

2100 32.69 AC

2000 11.52 AC

1900 11.64 AC

1800 3.98 AC

1700 5.42 AC

1600 5.20 AC

1500 5.36 AC

1400 5.00 AC

1400 5.00 AC

701 1.01 AC

700 2.99 AC

900 4.27 AC

1100 7.18 AC

1100 7.18 AC

1100 7.18 AC

1100 7.18 AC

1100 7.18 AC

1100 7.18 AC

1100 7.18 AC

1100 7.18 AC

1100 7.18 AC

1100 7.18 AC

1100 7.18 AC

1100 7.18 AC

600 3.28 AC

701 1.01 AC

900 4.27 AC

1100 7.18 AC

1100 7.18 AC

1100 7.18 AC

1100 7.18 AC

1100 7.18 AC

1100 7.18 AC

1100 7.18 AC

1100 7.18 AC

1100 7.18 AC

1100 7.18 AC

1100 7.18 AC

1100 7.18 AC

500 10.42 AC

701 1.01 AC

900 4.27 AC

1100 7.18 AC

1100 7.18 AC

1100 7.18 AC

1100 7.18 AC

1100 7.18 AC

1100 7.18 AC

1100 7.18 AC

1100 7.18 AC

1100 7.18 AC

1100 7.18 AC

1100 7.18 AC

1100 7.18 AC

300 10.92 AC

701 1.01 AC

900 4.27 AC

1100 7.18 AC

1100 7.18 AC

1100 7.18 AC

1100 7.18 AC

1100 7.18 AC

1100 7.18 AC

1100 7.18 AC

1100 7.18 AC

1100 7.18 AC

1100 7.18 AC

1100 7.18 AC

1100 7.18 AC

401 9.33 AC

701 1.01 AC

900 4.27 AC

1100 7.18 AC

1100 7.18 AC

1100 7.18 AC

1100 7.18 AC

1100 7.18 AC

1100 7.18 AC

1100 7.18 AC

1100 7.18 AC

1100 7.18 AC

1100 7.18 AC

1100 7.18 AC

1100 7.18 AC

400 8.43 AC

701 1.01 AC

900 4.27 AC

1100 7.18 AC

1100 7.18 AC

1100 7.18 AC

1100 7.18 AC

1100 7.18 AC

1100 7.18 AC

1100 7.18 AC

1100 7.18 AC

1100 7.18 AC

1100 7.18 AC

1100 7.18 AC

1100 7.18 AC

400 8.43 AC

701 1.01 AC

900 4.27 AC

1100 7.18 AC

1100 7.18 AC

1100 7.18 AC

1100 7.18 AC

1100 7.18 AC

1100 7.18 AC

1100 7.18 AC

1100 7.18 AC

1100 7.18 AC

1100 7.18 AC

1100 7.18 AC

1100 7.18 AC

400 8.43 AC

701 1.01 AC

900 4.27 AC

1100 7.18 AC

1100 7.18 AC

1100 7.18 AC

1100 7.18 AC

1100 7.18 AC

1100 7.18 AC

1100 7.18 AC

1100 7.18 AC

1100 7.18 AC

1100 7.18 AC

1100 7.18 AC

1100 7.18 AC

400 8.43 AC

701 1.01 AC

900 4.27 AC

1100 7.18 AC

1100 7.18 AC

1100 7.18 AC

1100 7.18 AC

1100 7.18 AC

1100 7.18 AC

1100 7.18 AC

1100 7.18 AC

1100 7.18 AC

1100 7.18 AC

1100 7.18 AC

1100 7.18 AC

400 8.43 AC

701 1.01 AC

900 4.27 AC

1100 7.18 AC

1100 7.18 AC

1100 7.18 AC

1100 7.18 AC

1100 7.18 AC

1100 7.18 AC

1100 7.18 AC

1100 7.18 AC

1100 7.18 AC

1100 7.18 AC

1100 7.18 AC

1100 7.18 AC

400 8.43 AC

701 1.01 AC

900 4.27 AC

1100 7.18 AC

1100 7.18 AC

1100 7.18 AC

1100 7.18 AC

1100 7.18 AC

1100 7.18 AC

1100 7.18 AC

1100 7.18 AC

1100 7.18 AC

1100 7.18 AC

1100 7.18 AC

1100 7.18 AC

400 8.43 AC

701 1.01 AC

900 4.27 AC

1100 7.18 AC

1100 7.18 AC

1100 7.18 AC

1100 7.18 AC

1100 7.18 AC

1100 7.18 AC

1100 7.18 AC

1100 7.18 AC

1100 7.18 AC

1100 7.18 AC

1100 7.18 AC

1100 7.18 AC

400 8.43 AC

701 1.01 AC

900 4.27 AC

1100 7.18 AC

1100 7.18 AC

1100 7.18 AC

1100 7.18 AC

1100 7.18 AC

1100 7.18 AC

1100 7.18 AC

1100 7.18 AC

1100 7.18 AC

1100 7.18 AC

1100 7.18 AC

1100 7.18 AC

400 8.43 AC

701 1.01 AC

900 4.27 AC

1100 7.18 AC

1100 7.18 AC

1100 7.18 AC

1100 7.18 AC

1100 7.18 AC

1100 7.18 AC

1100 7.18 AC

1100 7.18 AC

1100 7.18 AC

1100 7.18 AC

1100 7.18 AC

1100 7.18 AC

400 8.43 AC

701 1.01 AC

900 4.27 AC

1100 7.18 AC

<