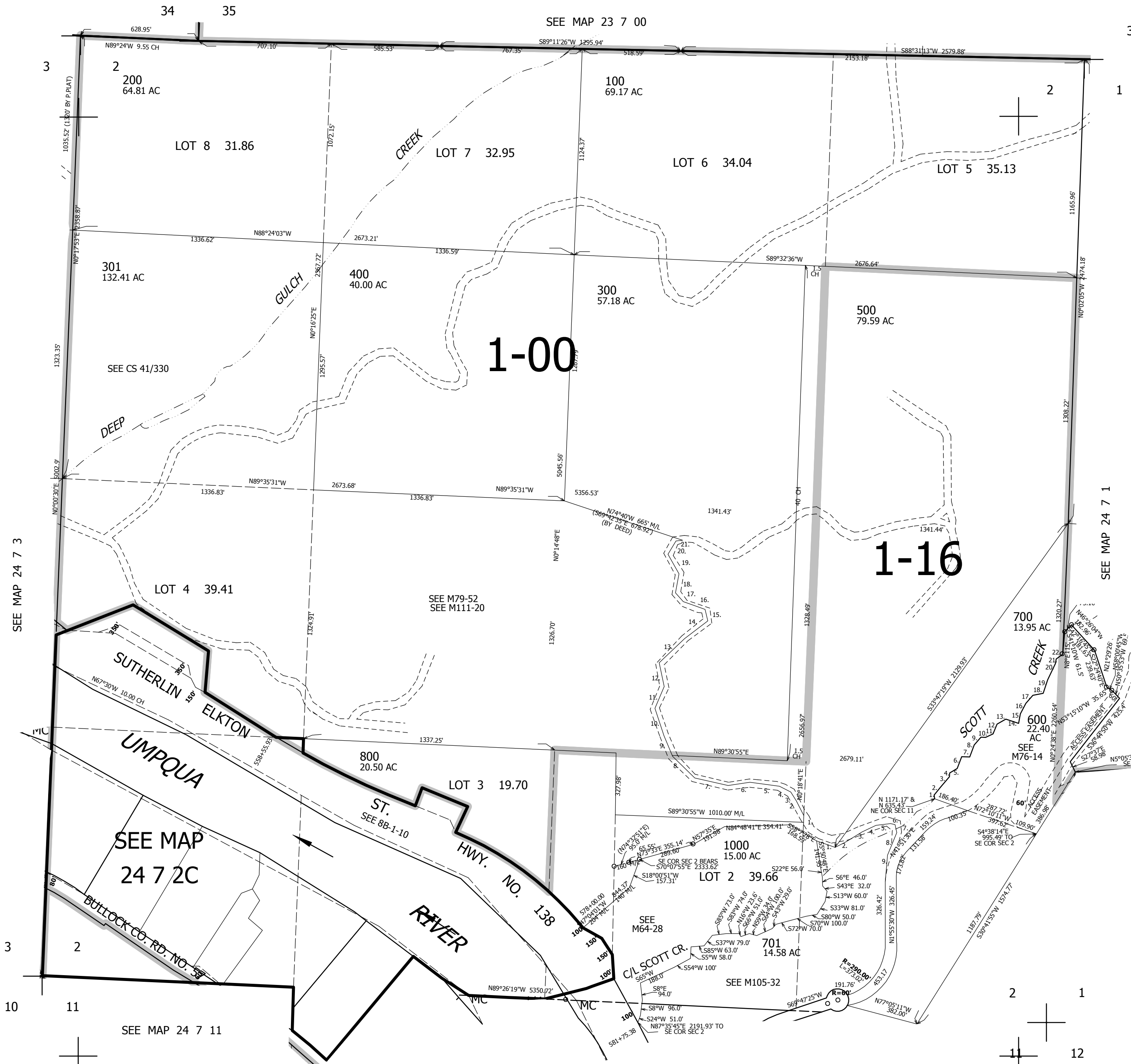


THIS MAP WAS PREPARED FOR ASSESSMENT PURPOSE ONLY.

SEC.2 T.24S. R.7W. W.M. DOUGLAS COUNTY

REVISED ON 6-6-97

1" = 400'



CANCELLED NOS
501 900 702
502 100M1 400M1
500M1 600M1 700M1

PARCEL 600

1. NORTH 14'
2. N35°10'E 61'
3. N40°16'E 61'
4. N4°E 18'
5. N46°20'E 57.5'
6. N17°E 55.5'
7. N83°25'E 39.5'
8. N16°E 64.5'
9. N39°15'E 55'
10. N89°39'E 24'
11. N55°36'E 51.5'
12. N17°E 41'
13. N50°28'E 63.5'
14. S67°33'E 72.5'
15. N10°E 57'
16. N28°05'E 64'
17. N41°17'E 52'
18. N65°53'E 55'
19. N14°59'E 74.5'
20. N21°01'E 96'
21. N18°E 21'
22. N45°21'E 35'

PARCEL 301

1. N0°19'30"E 45.99'
2. N31°53'20"W 70.4'
3. N41°56'53"W 42'
4. N60°59'12"W 81.81'
5. N86°41'32"W 154.58'
6. S77°33'36"W 115.25'
7. N78°58'24"W 173.22'
8. N50°14'02"W 162.62'
9. N20°12'03"W 101.37'
10. N23°05'59"W 159.87'
11. N20°06'19"E 125.12'
12. N18°49'57"W 114.47'
13. N40°50'11"E 190.31'
14. N54°51'39"E 159.63'
15. N11°34'06"W 49.31'
16. N73°21'56"W 144.39'
17. N42°38'08"W 68.76'
18. N9°12'51"E 98.85'
19. N34°02'03"W 114.12'
20. N26°07'03"E 86.07'
21. N71°36'34"E 41.48'

PARCEL 701

1. S72°30'03"E 98.73'
2. N62°24'48"E 54.1'
3. N55°51'34"E 112.26'
4. N63°40'34"E 76.65'
5. N80°37'05"E 98.92'
6. S70°12'02"E 28.75'
7. S20°18'57"E 41.36'
8. S21°52'16"W 132.36'
9. R=326.4' L=135.52'

SEE MAP 24 7 3

SEE MAP 24 7 1

SEE MAP 24 7 2C

SEE MAP 24 7 11

SEE MAP 24 7 11BA

SEE MAP 24 7 11A

4,129,000

684,000