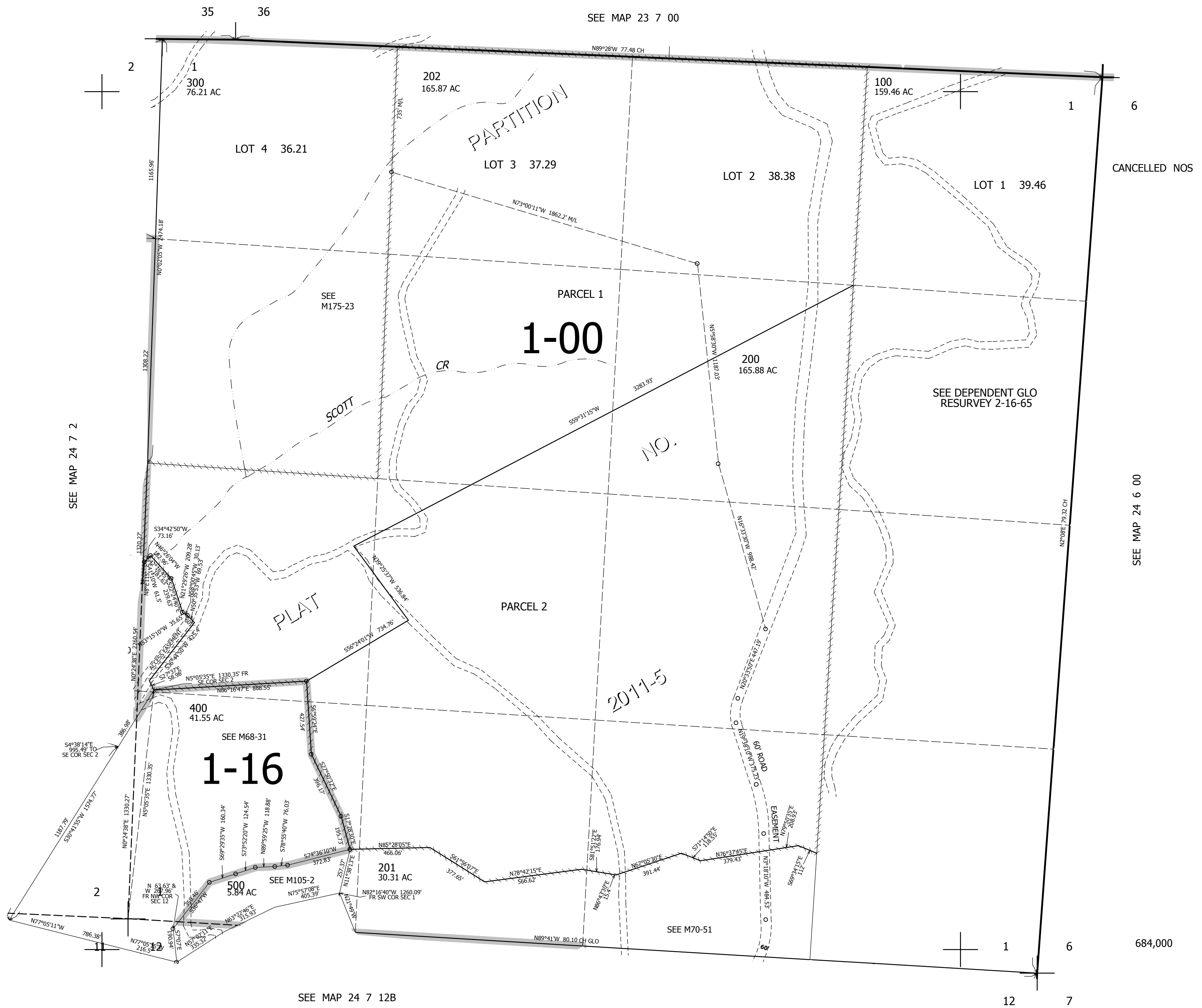


THIS MAP WAS PREPARED FOR ASSESSMENT PURPOSE ONLY.

SEC.1 T.24S. R.7W. W.M.  
DOUGLAS COUNTY  
1" = 400'

REVISED ON  
2-26-14

24 7 1



CANCELLED NOS

SEE MAP 24 6 00

684,000

24 7 1

SEE MAP 24 7 2

SEE MAP 23 7 00

SEE MAP 24 7 12B

SEE MAP 24 7 12

4,134,000