

THIS MAP WAS PREPARED FOR ASSESSMENT PURPOSE ONLY.

T.24S. R.7W. W.M. DOUGLAS COUNTY

REVISED ON 2-24-00

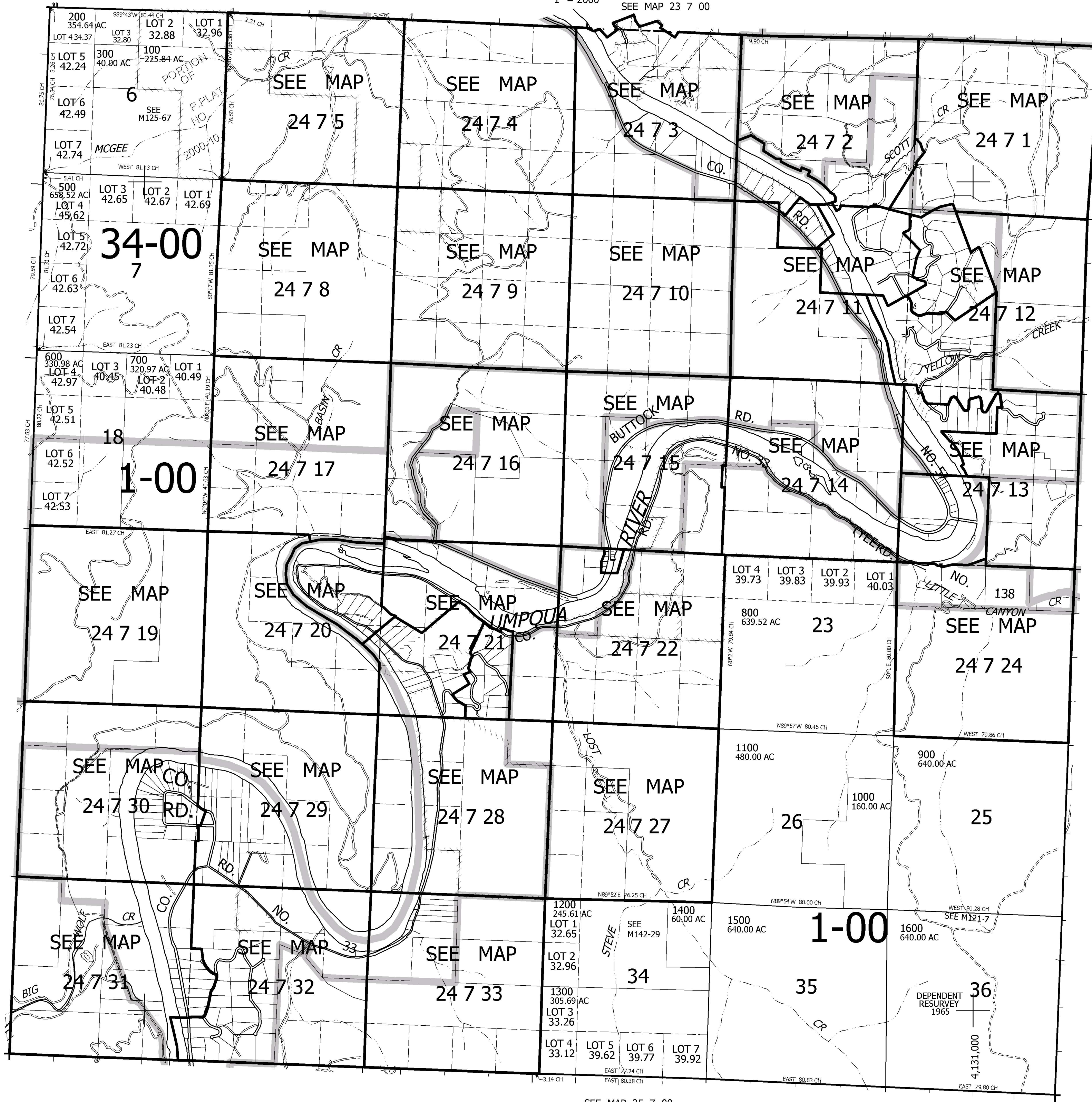
24 7 00 & INDEX

1" = 2000' SEE MAP 23 7 00

CANCELLED NOS 400 200M1 1000M1

SEE MAP 24 8 00

SEE MAP 24 6 00



SEE MAP 25 7 00

24 7 00 & INDEX

660,000