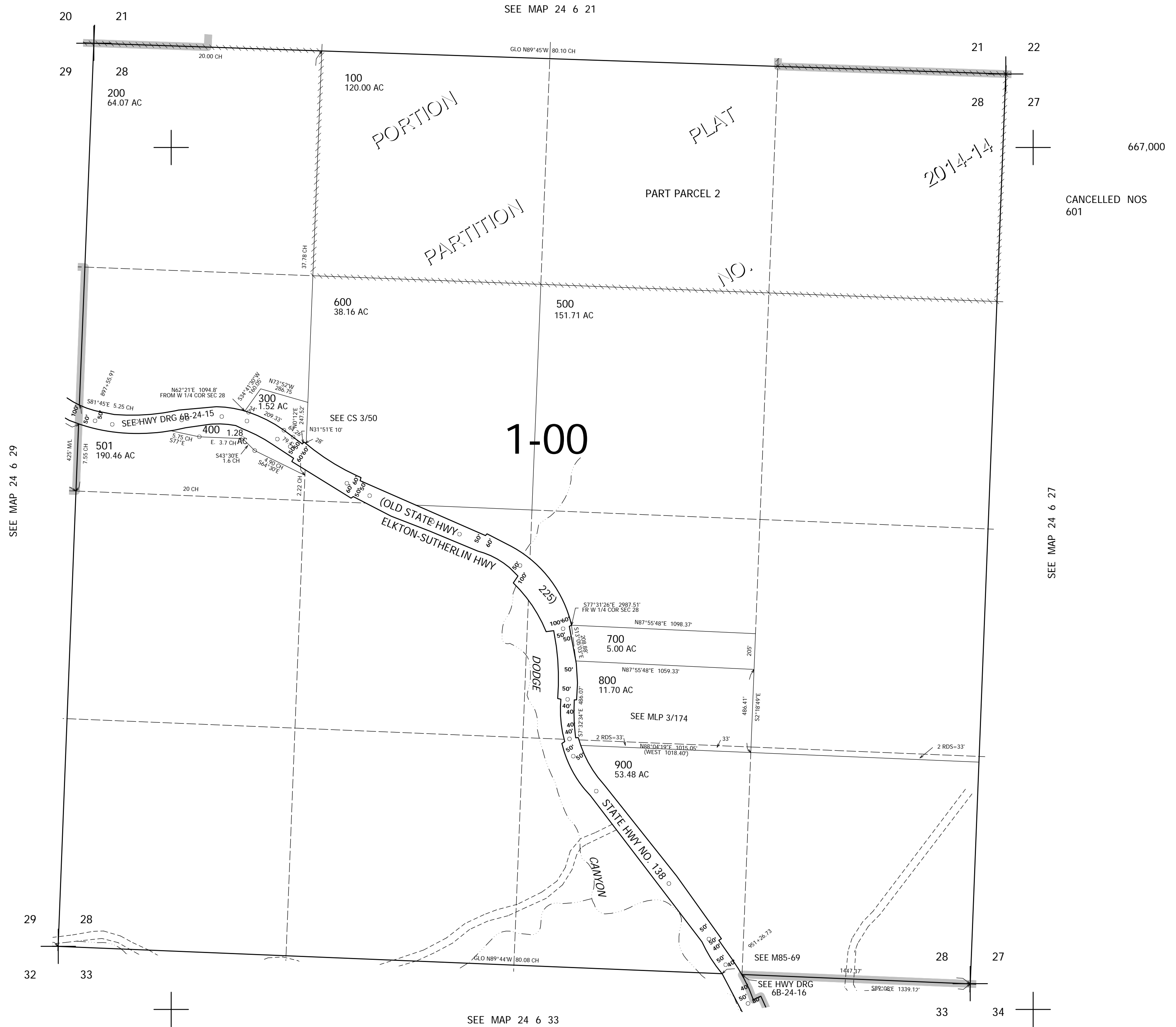


THIS MAP WAS PREPARED FOR ASSESSMENT PURPOSE ONLY.

SEC.28 T.24S. R.6W. W.M.
DOUGLAS COUNTY
1" = 400'

REVISED ON
10-31-14

24 6 28



667,000

CANCELLED NOS
601

SEE MAP 24 6 29

SEE MAP 24 6 27

SEE MAP 24 6 33

4,145,000

24 6 28