

THIS MAP WAS PREPARED FOR ASSESSMENT PURPOSE ONLY.

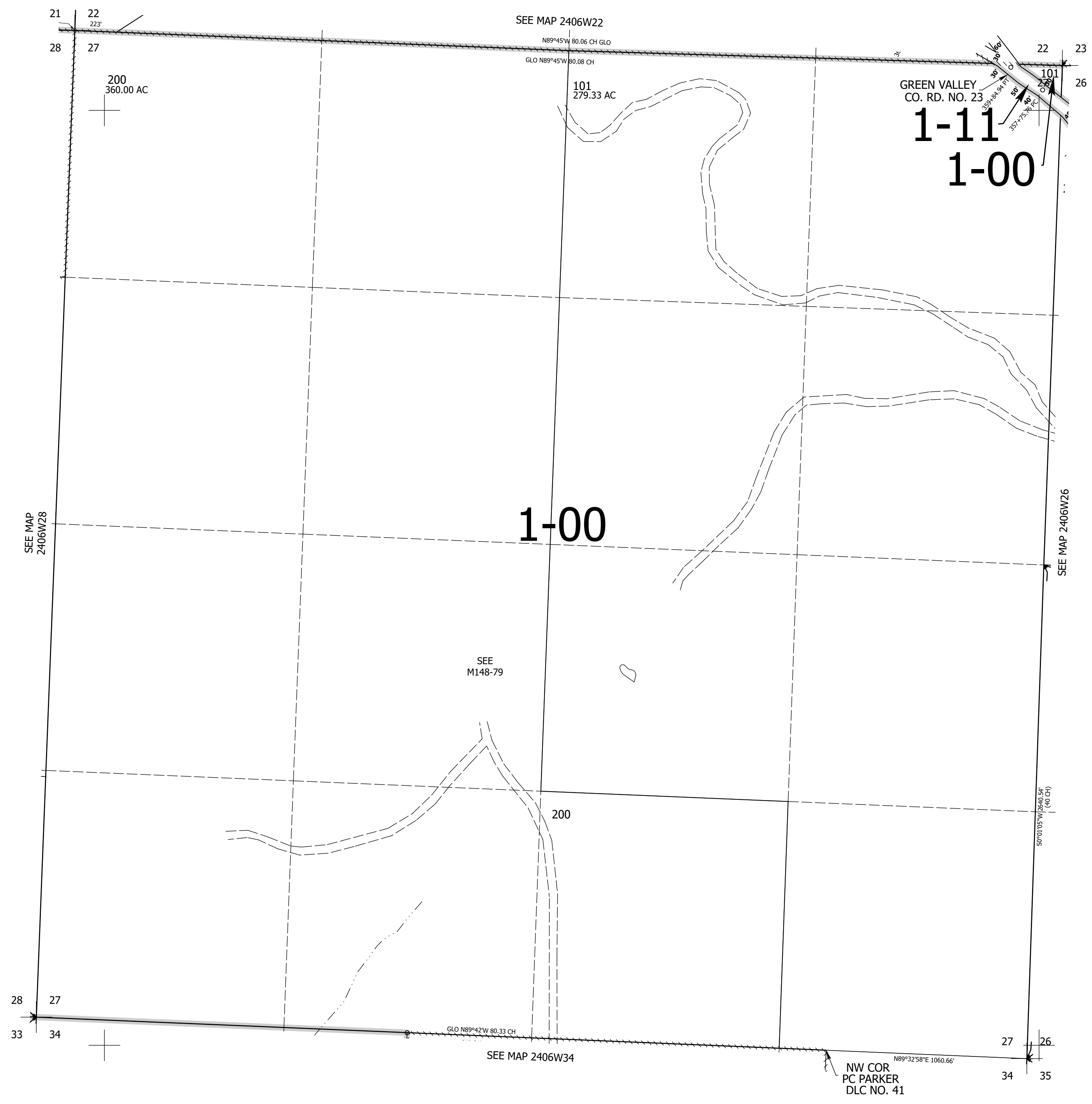
Upper Left:
123°24'41"W 43°27'47"N
4148461E 668114N ft

SEC.27 T.24S. R.06W. W.M.
DOUGLAS COUNTY
1" = 400'

Date Exported 2025-07-21

240627

CANCELLED NOS:
100 101M1



240627

Lower Right:
123°22'52"W 43°26'41"N
4156311E 661159N ft