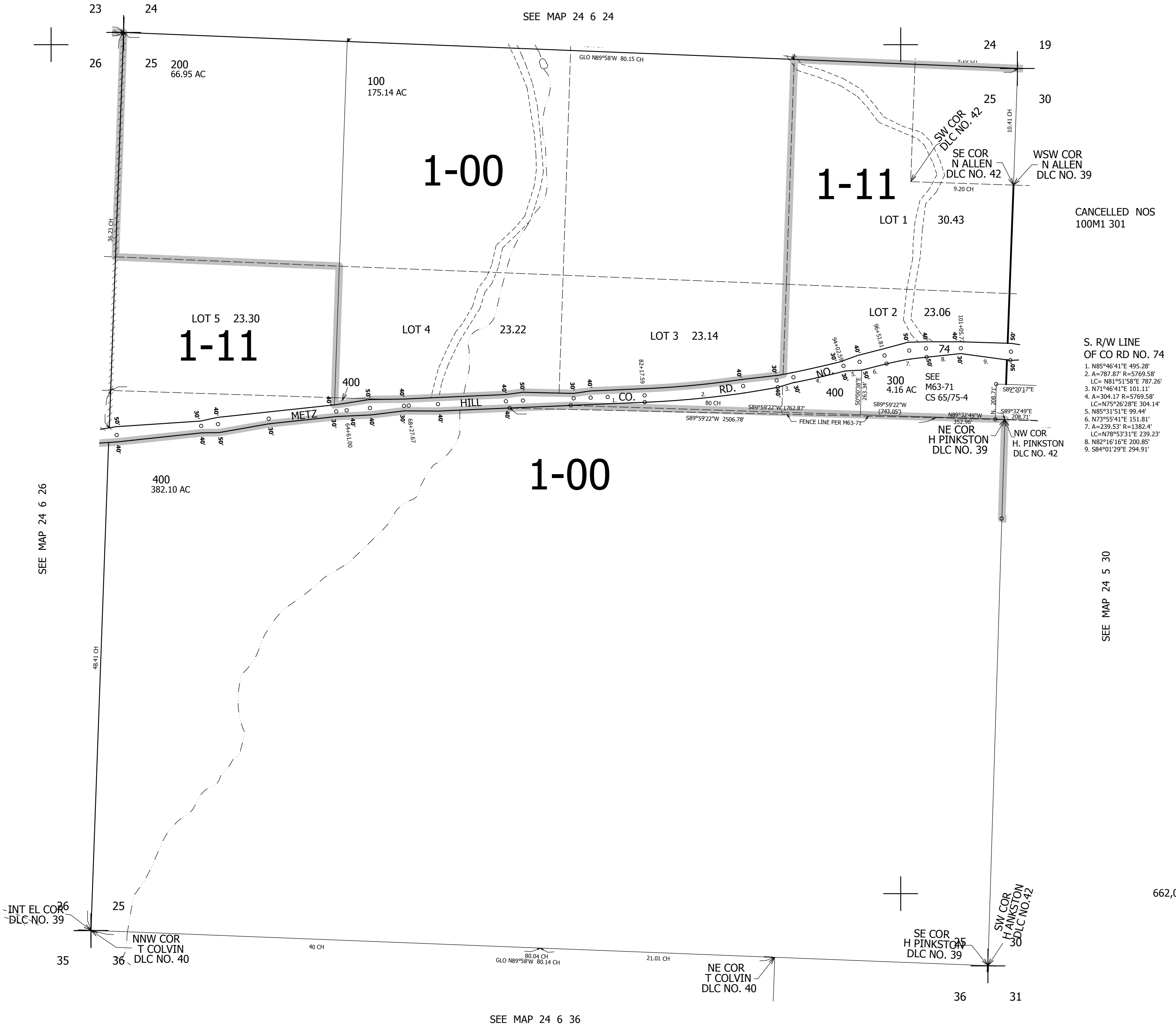


THIS MAP WAS PREPARED FOR ASSESSMENT PURPOSE ONLY.

SEC.25 T.24S. R.6W. W.M.
DOUGLAS COUNTY
1" = 400'

REVISED ON
12-17-10

24 6 25



CANCELLED NOS
100M1 301

- S. R/W LINE
OF CO RD NO. 74
1. N85°46'41"E 495.28'
 2. A=787.87' R=5769.58'
LC= N81°51'58"E 787.26'
 3. N71°46'41"E 101.11'
 4. A=304.17 R=5769.58'
LC= N75°26'28"E 304.14'
 5. N85°31'51"E 99.44'
 6. N73°55'41"E 151.81'
LC= N78°53'31"E 239.23'
 7. A=239.53' R=1382.4'
 8. N82°16'16"E 200.85'
 9. S84°01'29"E 294.91'

SEE MAP 24 6 26

SEE MAP 24 5 30

SEE MAP 24 6 36

662,000

24 6 25

4,165,000