

THIS MAP WAS PREPARED FOR  
ASSESSMENT PURPOSE ONLY.

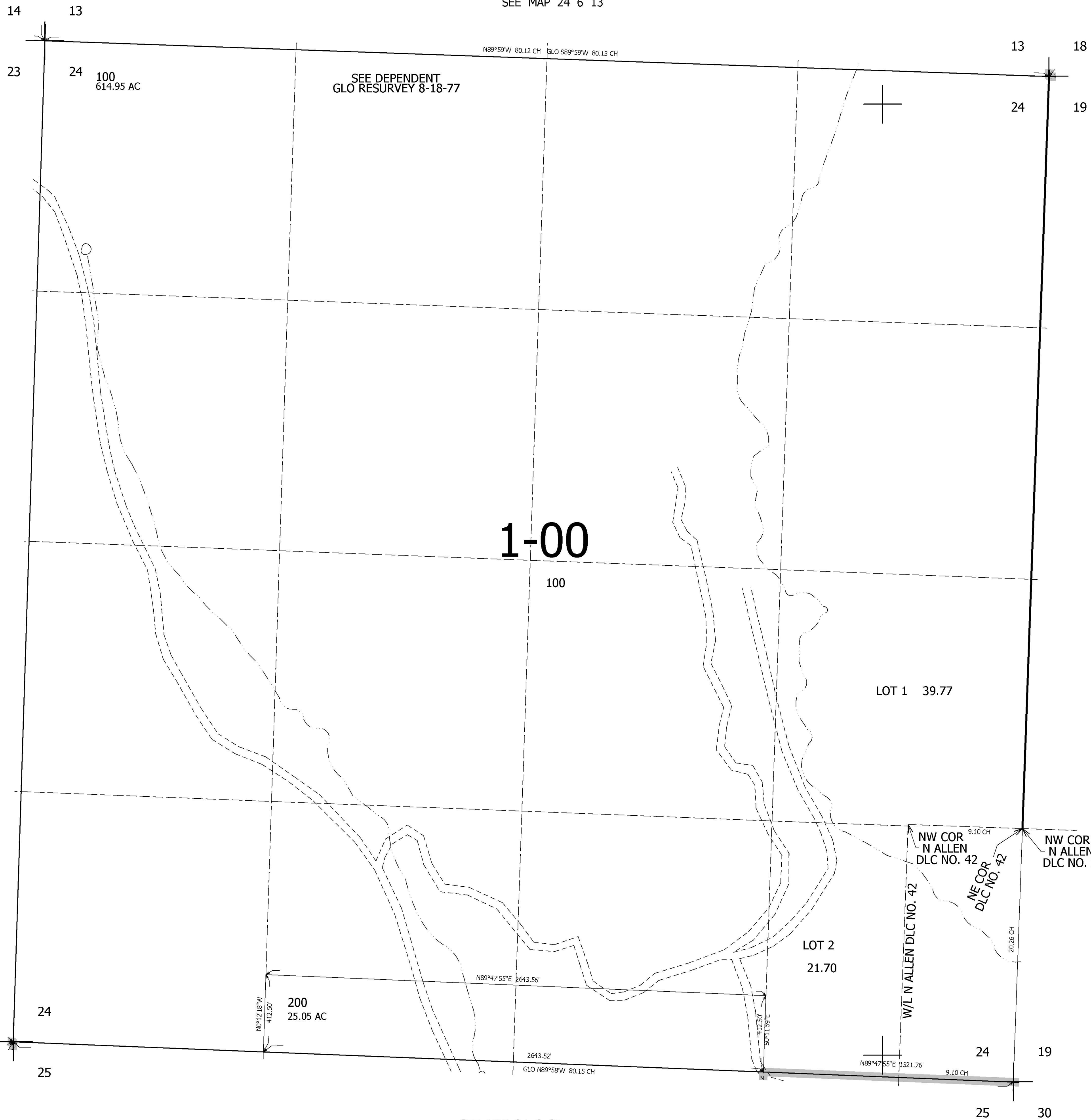
SEC.24 T.24S. R.6W. W.M.  
DOUGLAS COUNTY

1" = 400'

REVISED ON  
2-22-96

24 6 24

SEE MAP 24 6 13



CANCELLED NOS  
200M1 100M1

SEE MAP 24 6 23

SEE MAP 24 5 19

SEE MAP 24 6 25

4,165,000

667,000

24 6 24