

THIS MAP WAS PREPARED FOR ASSESSMENT PURPOSE ONLY.

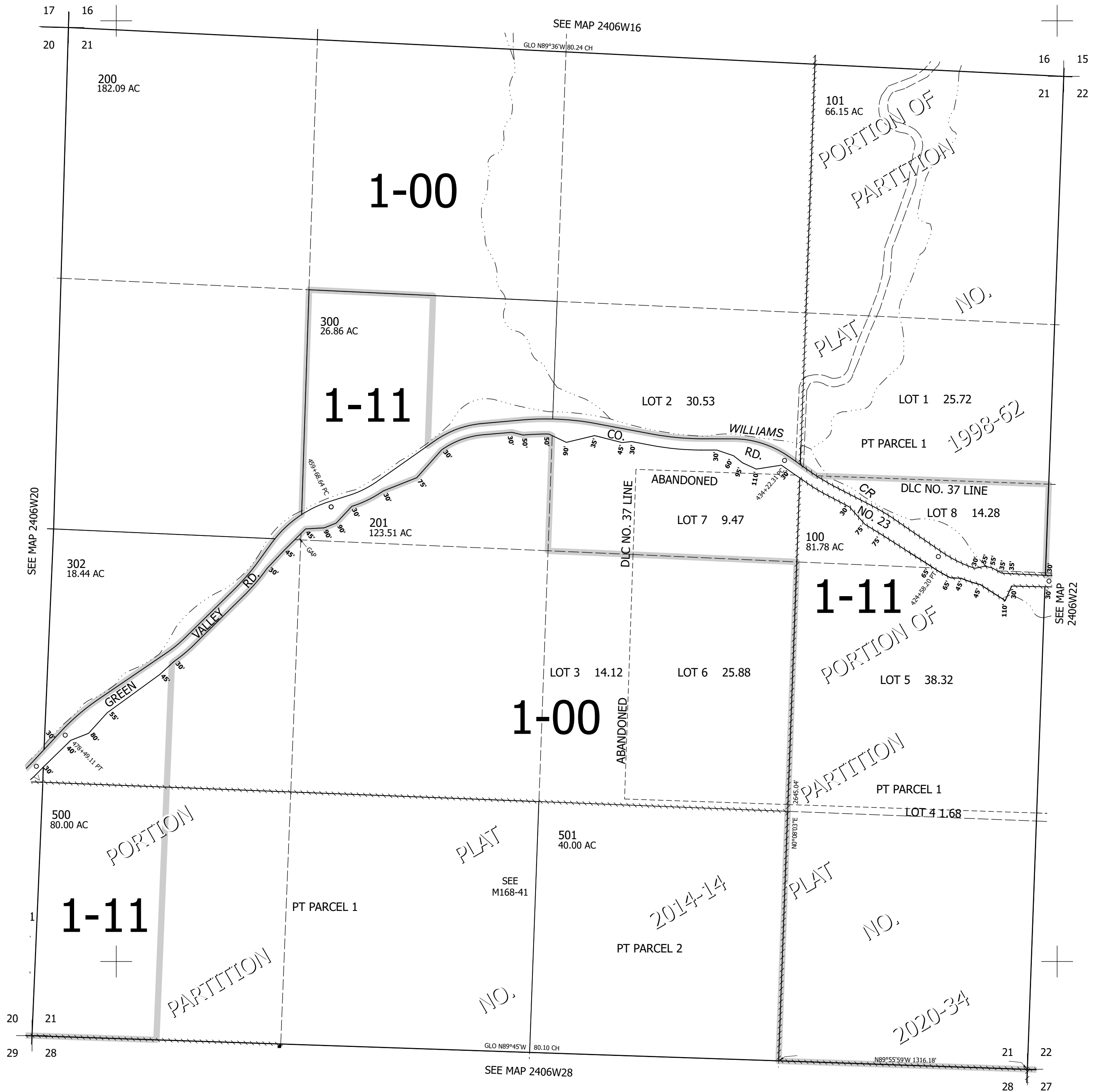
Upper Left:
123°25'53"W 43°28'41"N
4143417E 673741N ft

SEC.21 T.24S. R.06W. W.M.
DOUGLAS COUNTY
1" = 400'

Date Exported 2025-07-21

240621

CANCELLED NOS:
400 401 301



240621

Lower Right:
123°24'3"W 43°27'35"N
4151266E 666786N ft