

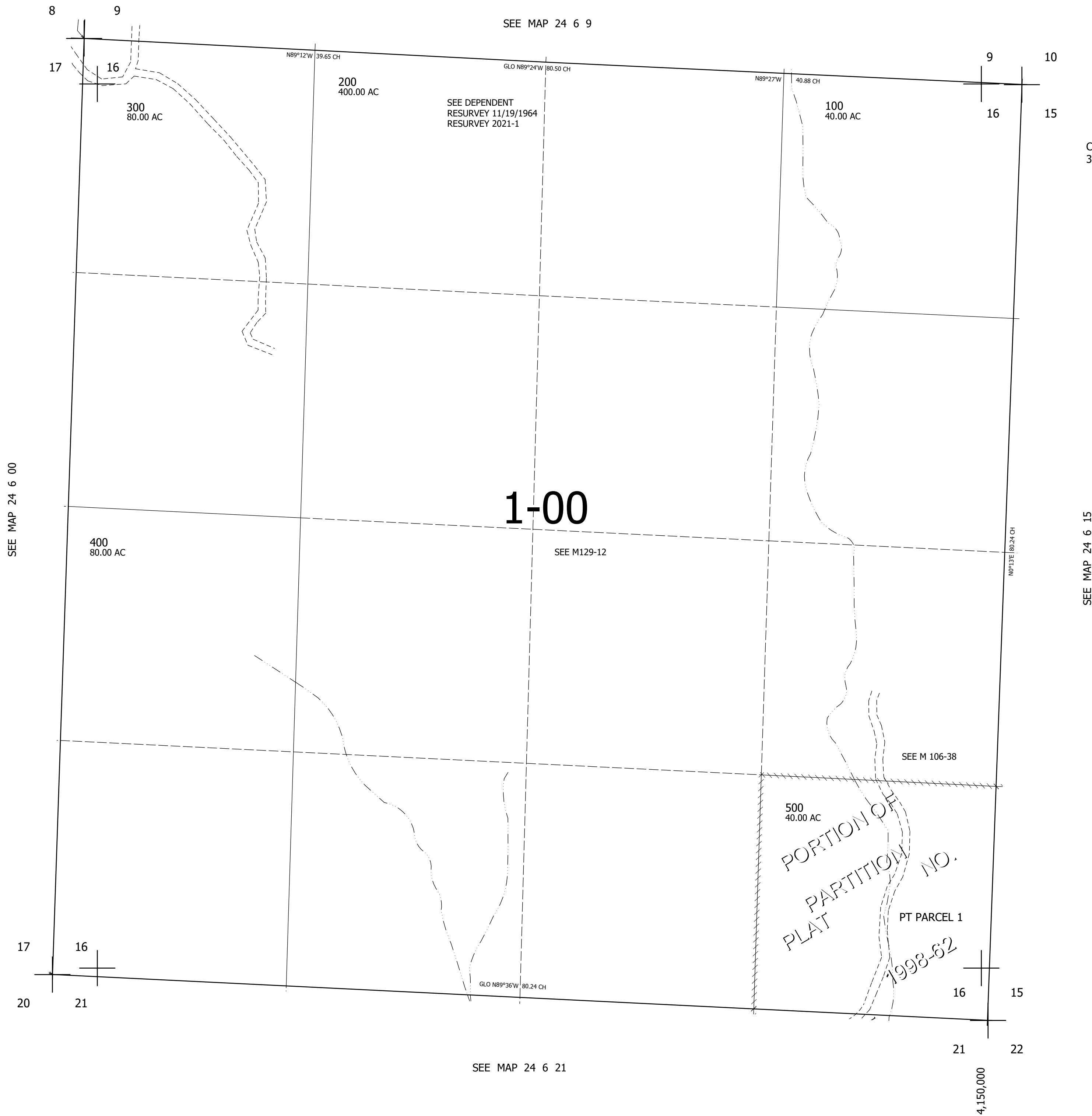
THIS MAP WAS PREPARED FOR  
ASSESSMENT PURPOSE ONLY.

SEC.16 T.24S. R.6W. W.M.  
DOUGLAS COUNTY

1" = 400'

REVISED ON  
6-24-98

24 6 16



1-00

300  
80.00 AC

200  
400.00 AC

SEE DEPENDENT  
RESURVEY 11/19/1964  
RESURVEY 2021-1

100  
40.00 AC

400  
80.00 AC

SEE M129-12

SEE M 106-38

500  
40.00 AC

PORTION OF  
PLAT PARTITION  
NO. 1998-62  
PT PARCEL 1

GLO N89°36'W 80.24 CH

4,150,000

673,000

24 6 16