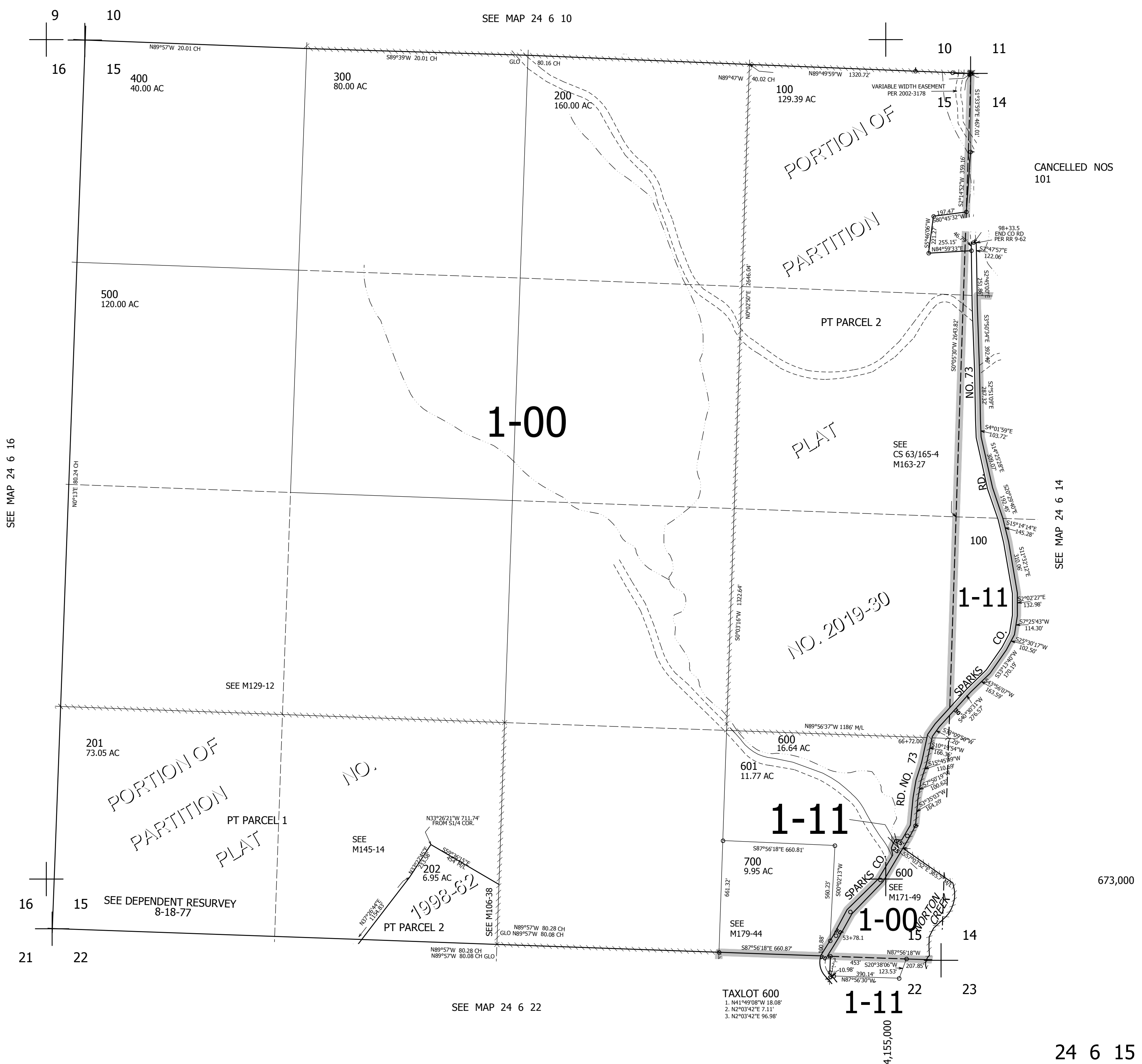


THIS MAP WAS PREPARED FOR ASSESSMENT PURPOSE ONLY.

SEC.15 T.24S. R.6W. W.M.
DOUGLAS COUNTY
1" = 400'

REVISED ON
1-7-20

24 6 15



SEE MAP 24 6 16

SEE MAP 24 6 10

SEE MAP 24 6 14

SEE MAP 24 6 22

TAXLOT 600
1. N41°49'08"W 18.08'
2. N2°03'42"E 7.11'
3. N2°03'42"E 96.98'

673,000

24 6 15