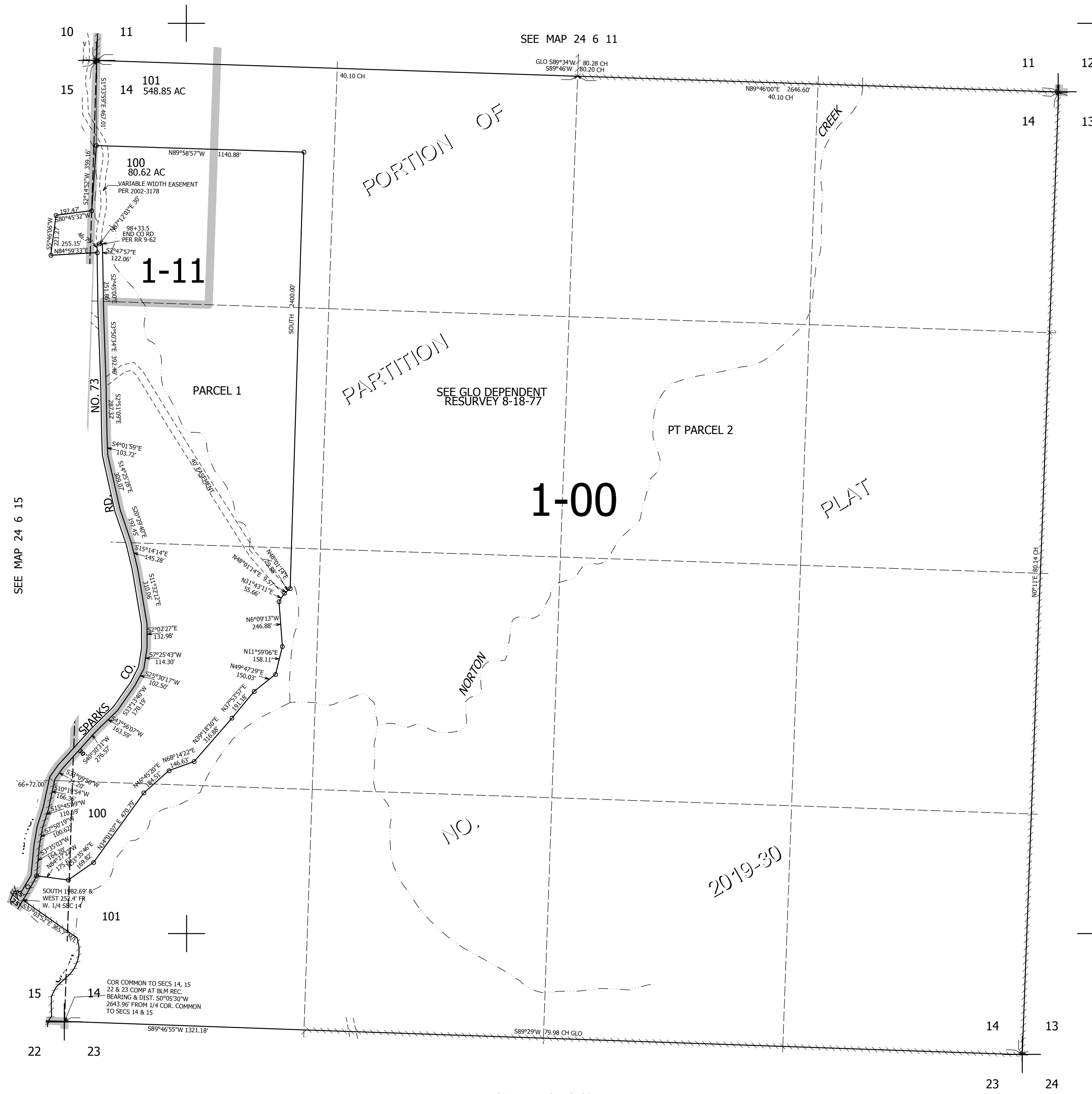


THIS MAP WAS PREPARED FOR ASSESSMENT PURPOSE ONLY.

SEC.14 T.24S. R.6W. W.M. DOUGLAS COUNTY
1" = 400'

REVISED ON 1-7-20

24 6 14



CANCELLED NOS
201 200 102
103

SEE MAP 24 6 15

SEE MAP 24 6 11

SEE MAP 24 6 13

SEE MAP 24 6 23

673,000

4,161,000

24 6 14