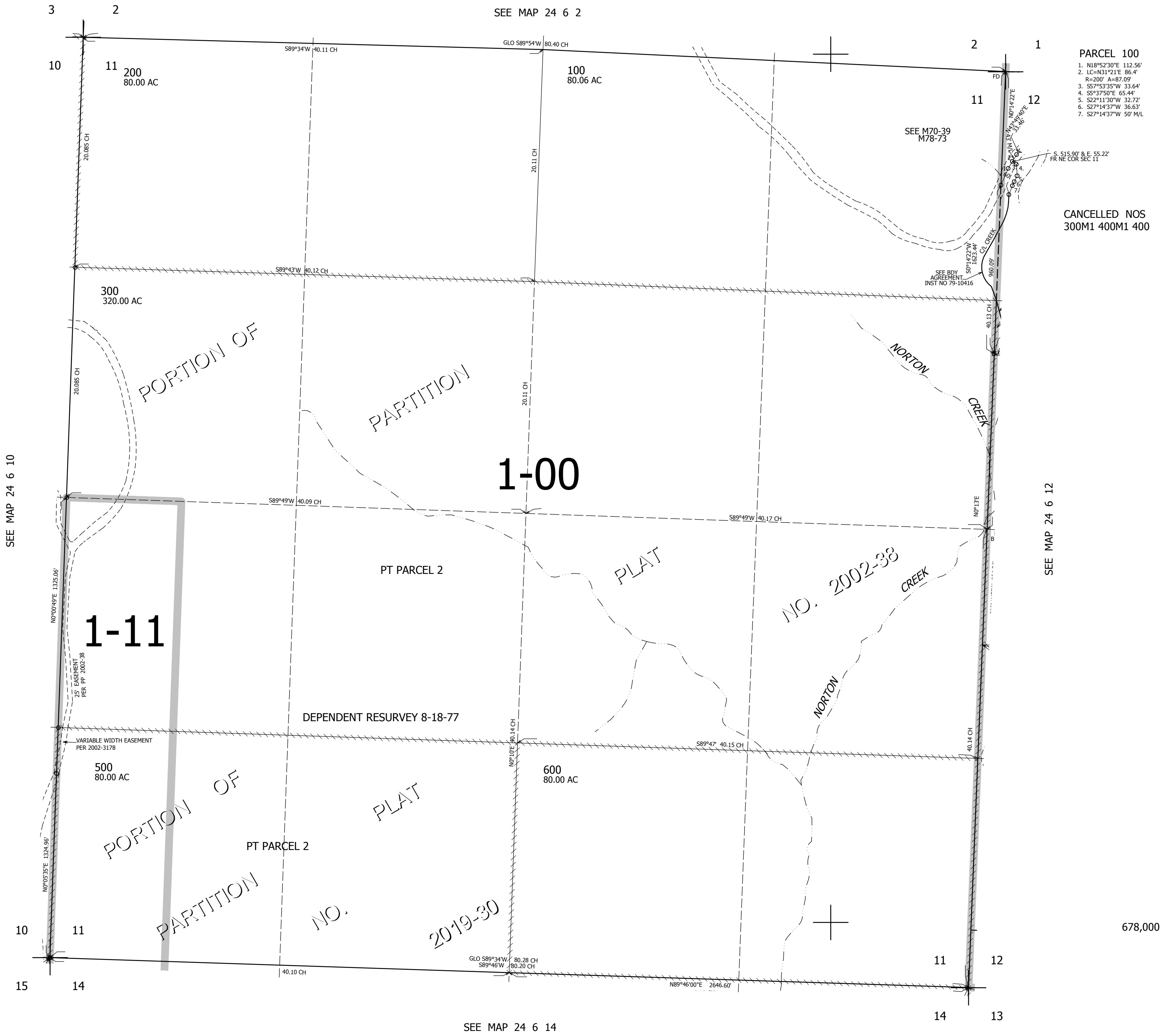


THIS MAP WAS PREPARED FOR ASSESSMENT PURPOSE ONLY.

SEC.11 T.24S. R.6W. W.M.  
DOUGLAS COUNTY  
1" = 400'

REVISED ON  
10-22-19

24 6 11



- PARCEL 100**
- N18°52'30"E 112.56'
  - LC=N31°21'E 86.4'
  - R=200' A=87.09°
  - S57°53'35"W 33.64'
  - S5°37'50"E 65.44'
  - S22°11'30"W 32.72'
  - S27°14'37"W 36.63'
  - S27°14'37"W 50' M/L

CANCELLED NOS  
300M1 400M1 400

678,000

4,160,000

24 6 11